



Report of Test

LLIA001617-018

Integrating Sphere Report

Catalog Number: LPT120W-850-EX39-G4 High Setting (120W)

Mogul-base retrofit lamp mounted VBU, formed plastic housing, formed aluminum heatsinks, clear plastic enclosures. 494 white LEDs, 12 CLW08E-120WC-19C2B-2835-A1 LED boards with 38 LEDs each and one CLW08E-120WD-19C2B-2835-A0 LED board with 38 LEDs

One internal LED driver



Performance Summary

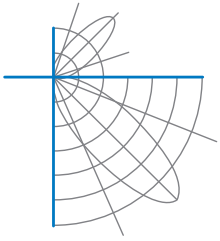
Voltage	120.0 Vac
Current	0.9566 A
Power	113.9 W
Frequency	59.99 Hz
Power Factor	0.992
Current THD	9.9 %
Total Luminous Flux	17853.9 lm
Efficacy	156.8 lm/W
Chromaticity (x,y)	(0.3418, 0.3527)
(u',v')	(0.2088, 0.4847)
Duv	0.0019
CCT	5129 K
CRI (Ra)	82
R9	2
TM-30: Rf	81
TM-30: Rg	96
TM-30: Rcs,h1	-13

Prepared For:

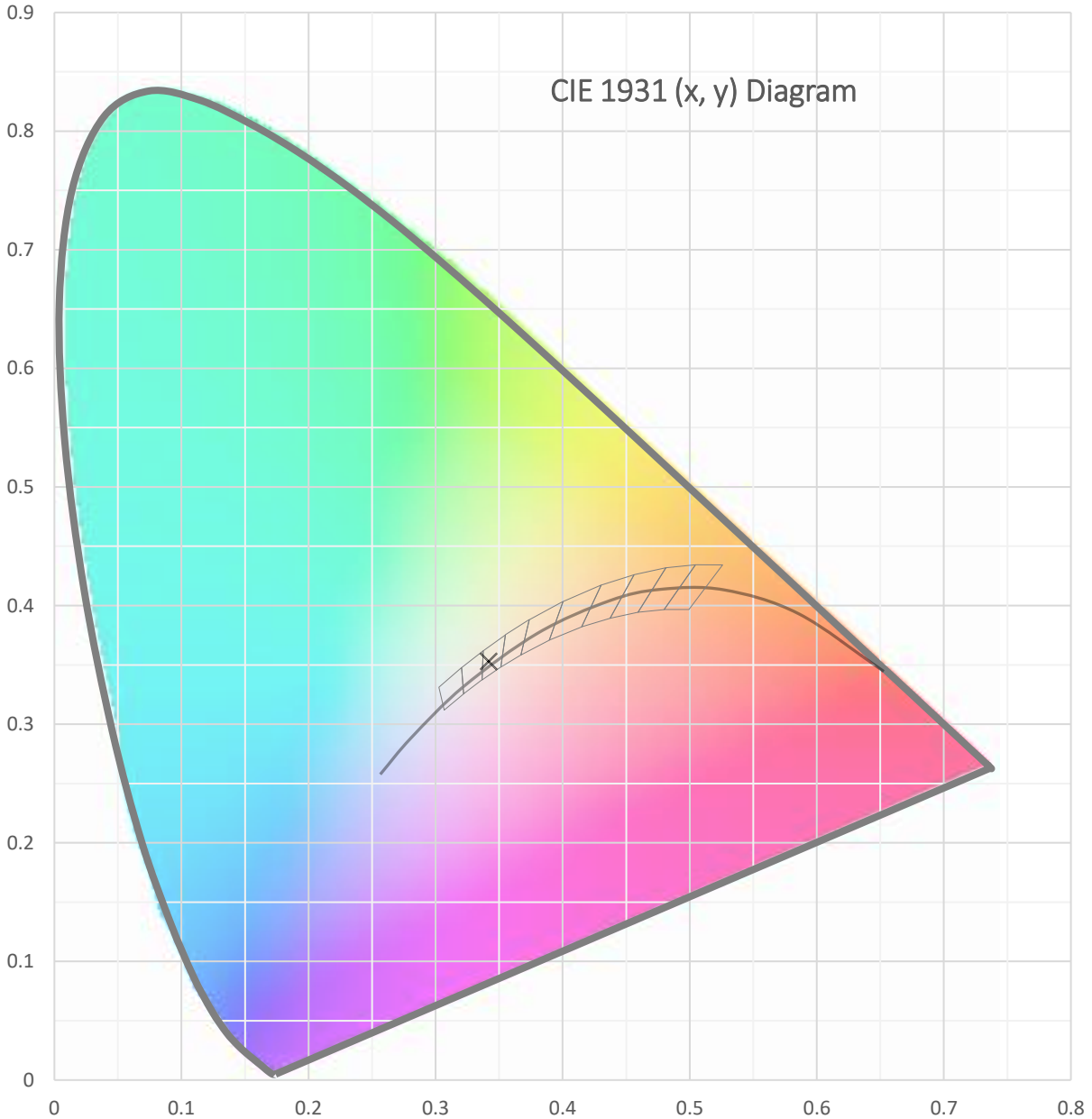
Topaz Lighting Corp
925 Waverly Avenue
Holtsville, NY 11742, USA

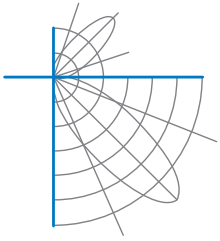
Test date: 12/29/2021
Report date: 12/30/2021

Signed: _____

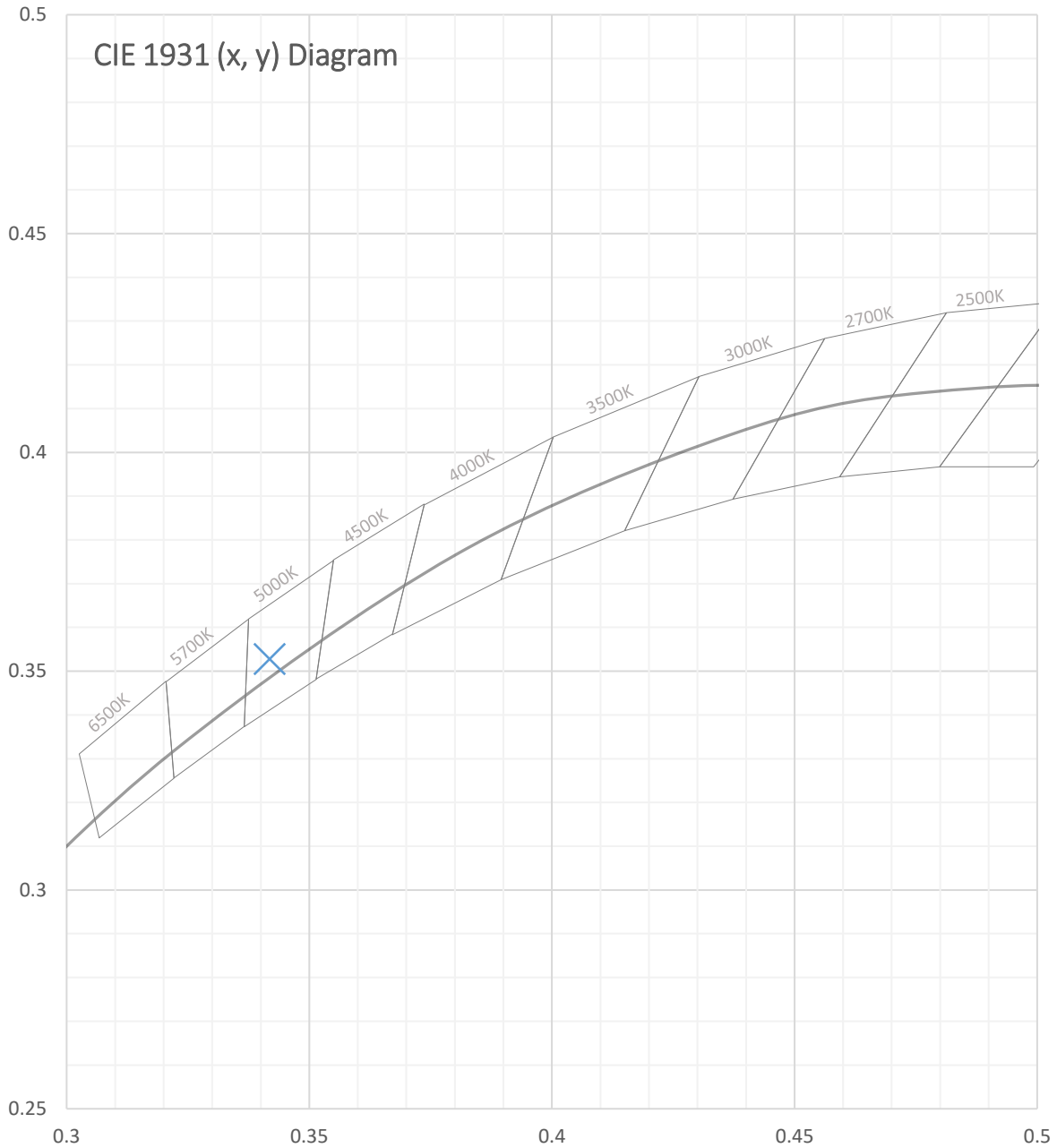


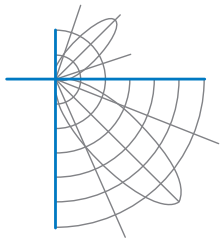
Test Report Number: LLIA001617-018





Test Report Number: LLIA001617-018





Test Report Number: LLIA001617-018

Total Radiant Flux	55.94 W
Total Luminous Flux	17853.9 Lm
Chromaticity CIE 1931 (x, y)	(0.3418, 0.3527)
Chromaticity CIE 1976 (u', v')	(0.2088, 0.4847)
Correlated Color Temperature (CCT)	5129 K
Color Rendering Index (Ra)	82
R1	80
R2	86
R3	91
R4	82
R5	81
R6	81
R7	86
R8	66
R9	2
R10	68
R11	82
R12	62
R13	82
R14	95
TM-30: Rf	81
TM-30: Rg	96
TM-30: Rcs,h1	-13
Distance from Planckian Locus (Duv)	0.0019
Scotopic/Photopic Ratio ‡	1.955

Electrical Data

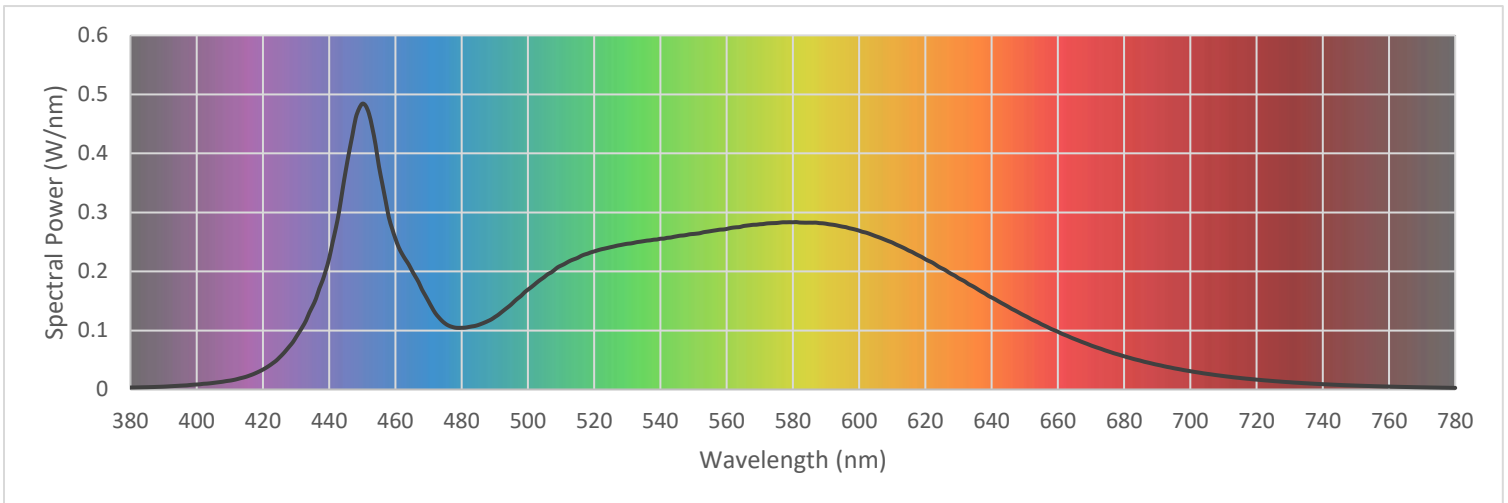
Voltage	120.0 Vac
Current	0.9566 A
Power	113.9 W
Frequency	59.99 Hz
Power Factor	0.992
Current THD	9.9 %

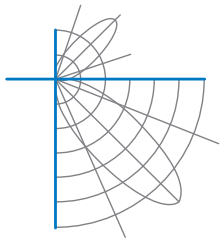


Test Report Number: LLIA001617-018

Summary Spectral Power Distribution (wavelength - nm, spectral power - W/nm)

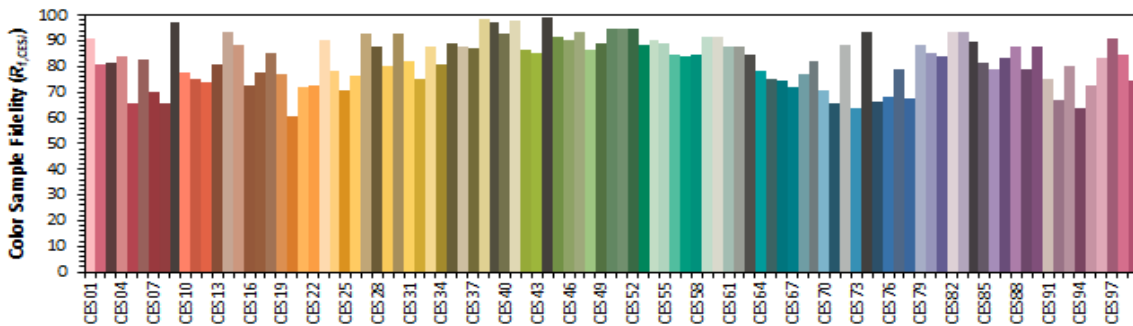
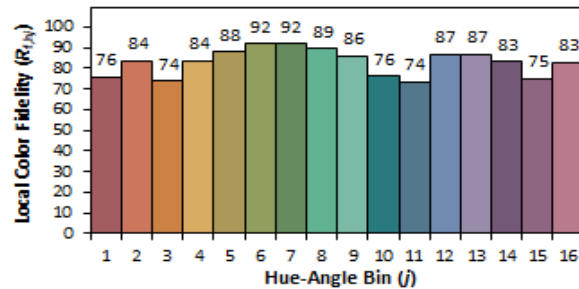
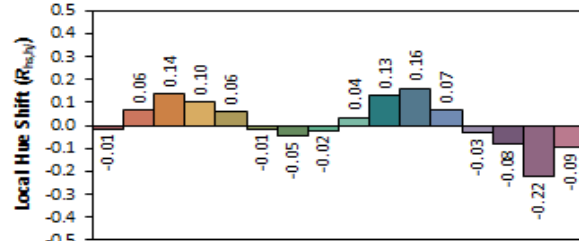
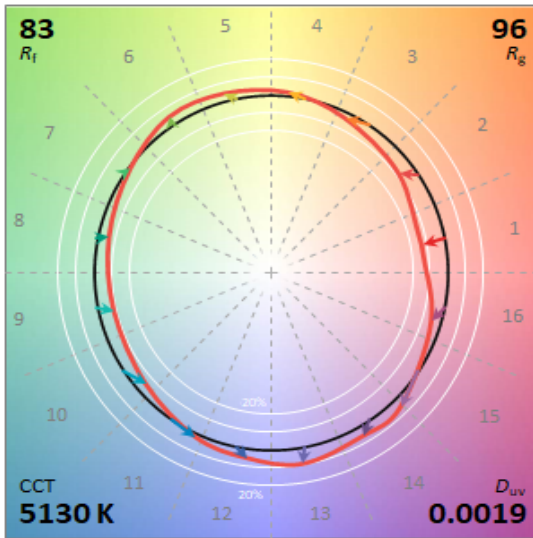
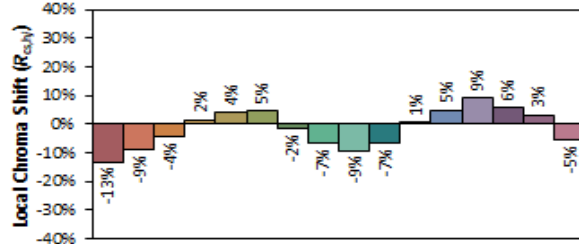
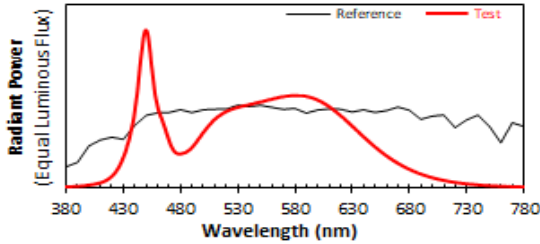
380	0.003315	480	0.104481	580	0.283317	680	0.056265
385	0.003844	485	0.109252	585	0.282647	685	0.048723
390	0.004781	490	0.122635	590	0.280847	690	0.041899
395	0.006427	495	0.144230	595	0.275870	695	0.036015
400	0.008421	500	0.169163	600	0.269112	700	0.030987
405	0.011084	505	0.190709	605	0.259765	705	0.026551
410	0.015006	510	0.209875	610	0.248979	710	0.022739
415	0.021707	515	0.222955	615	0.235323	715	0.019477
420	0.033737	520	0.233872	620	0.220675	720	0.016660
425	0.054338	525	0.241126	625	0.205182	725	0.014291
430	0.088815	530	0.246880	630	0.188625	730	0.012268
435	0.141341	535	0.251370	635	0.172713	735	0.010465
440	0.222435	540	0.255476	640	0.155870	740	0.008956
445	0.371306	545	0.259631	645	0.140284	745	0.007696
450	0.484195	550	0.263502	650	0.125057	750	0.006597
455	0.378486	555	0.268121	655	0.110653	755	0.005666
460	0.255403	560	0.271960	660	0.097840	760	0.004893
465	0.201143	565	0.276841	665	0.085591	765	0.004199
470	0.149283	570	0.279970	670	0.074650	770	0.003613
475	0.111770	575	0.282044	675	0.064960	775	0.003129
						780	0.002712





Test Report Number: LLIA001617-018

IES TM-30 Details



Notes:

x 0.3418
y 0.3526
u' 0.2088
v' 0.4847

CIE 13.3-1995 (CRI)	
R _a	82
R _s	3



Test Report Number: LLIA001617-018

Test Equipment Configuration: LightLab International Allentown 2m Integrating Sphere
Measurements acquired using a Labsphere CDS 2600 spectroradiometer
Testing was performed using 4 π geometry

Test Temperature: 25.1 °C

Test Procedure: Tested in accordance with the applicable sections of:
LM-79-19, LM-78-20, LM-58-20, ANSI_ANSLG C78.377-2017, TM-30-20

Significance: The laboratory has not participated in the selection of samples to be tested.
All testing is performed on the understanding that the significance of the report
is limited to the extent that the test sample is representative of production units.

Notes: The measurements and other derived quantities contained in this report
are based on the absolute data as measured.

Prorating the performance of the sample for the use of other component
combinations (such as lamp / LED / Ballast / driver), or for use in different
environmental conditions than that tested, may produce erroneous results.

This report is free of erasures and corrections

This report may contain data that are not covered by the NVLAP accreditation.
Quantities marked with ‡ are not covered.

This report must not be used by the customer to claim product certification,
approval or endorsement by NVLAP, NIST, or any agency of the Federal
Government.