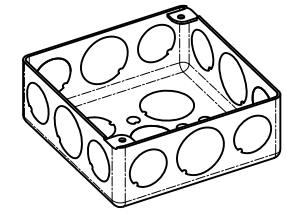
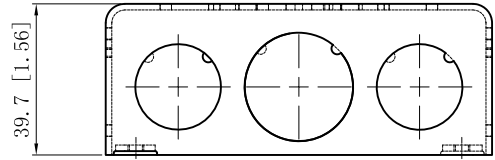
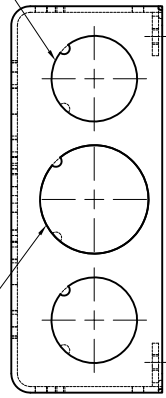


SIDES	BOTTOM
8 1/2" KNOCKOUTS	6 KNOCKOUTS
4 3/4" KNOCKOUTS	3 1/2" KNOCKOUTS
	2 3/4" KNOCKOUTS

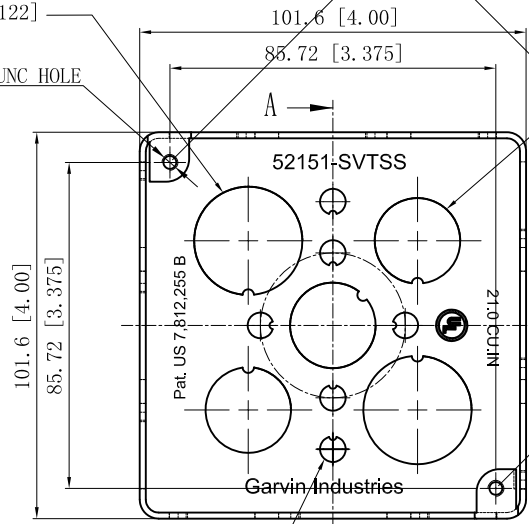
Material: 0.051~0.059"-SS316



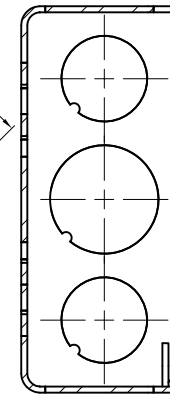
4 1/2" KNOCKOUTS $\phi=22.50$ [$\phi=0.886$]
 2 3/4" KNOCKOUTS $\phi=28.50$ [$\phi=1.122$]



2-#8-32 UNC HOLE



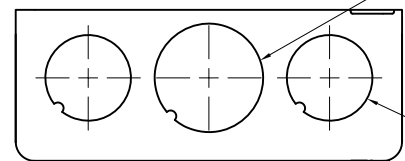
3 1/2" KNOCKOUTS $\phi=22.50$ [$\phi=0.886$]



CUTAWAY VIEW A-A

2 3/4" KNOCKOUTS $\phi=28.50$ [$\phi=1.122$]

6 KNOCKOUTS $\phi=6.75$ [$\phi=0.65$]



2 3/4" KNOCKOUTS $\phi=28.50$ [$\phi=1.122$]

4 1/2" KNOCKOUTS $\phi=22.5$ [$\phi=0.89$]

This data sheet is for reference only. GARVIN INDUSTRIES reserves the right to make changes to the design without prior notice.

DESCRIPTION	Patent #: Pat. US 7,812,255 B
TRADE REFERENCE TERMS	

STANDARD PACKING	50 PCS
------------------	--------

TITLE		GARVIN INDUSTRIES	
		4" SQUARE BOXES (1-1/2" DEEP)	
SIZE	DWG NO.		REV
A4	52151-SVTSS		F
DATA SHEET			
www.garvinindustries.com			