



Southwire™

# 4" SQUARE SWIVEL FIXTURE HANGERS

## 20° MAX SWING FROM VERTICAL

**FEATURES**

- Crushed corner design allows use of standard box cover screws
- Device mounting hardware included

**APPLICATIONS**

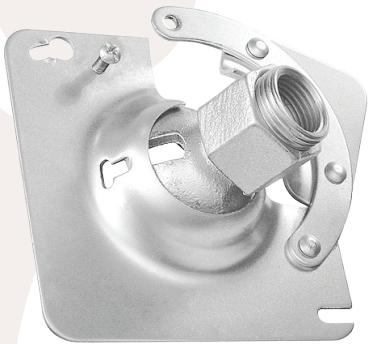
- 4" square, 1/2 in raised exposed work covers are used to close a 4" square junction box or to attach a device(s) in a surface mount industrial or commercial setting

**STANDARD MATERIAL**

- Galvanized steel or 316 stainless steel

**CERTIFICATIONS**

- UL, cULus Listed



SC-5075HF



PART #	DESCRIPTION	FITS CONDUIT	MASTER QTY.
SC-5075HF	HANDS-FREE DESIGN FOR WIRING OF FIXTURE	1/2" OR 3/4"	10
SC-50	STANDARD TYPE	1/2" ONLY	25
SC-75	STANDARD TYPE	3/4" ONLY	25
GSC-5075	STANDARD TYPE WITH GROUND WIRE	1/2" OR 3/4"	25
MFHS50-75	STANDARD TYPE	1/2" OR 3/4"	10
34S	STANDARD TYPE	1/2" OR 3/4"	25

\*Painted UL Listed component

Rev. 1, 3/24

**BUILT FOR DURABILITY.  
BUILT FOR RELIABILITY.  
BUILT FOR WORK.™**

1-855-798-6657 | SOUTHWIRE.COM

©2024 Southwire Company, LLC. All rights reserved.  
\*Registered Trademark & ™Trademark of Southwire Company, LLC.



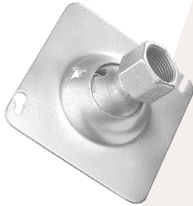
**Southwire™**

# 4" SQUARE SWIVEL FIXTURE HANGERS

20° MAX SWING FROM VERTICAL



**SC-50**



**SC-75**



**GSC-5075**



**MFHS50-75**



**34S**

Rev. 1, 3/24

**[ BUILT FOR DURABILITY.  
BUILT FOR RELIABILITY.  
BUILT FOR WORK.™ ]**

**1-855-798-6657 | SOUTHWIRE.COM**

©2024 Southwire Company, LLC. All rights reserved.  
\*Registered Trademark & ™Trademark of Southwire Company, LLC.