



**Southwire™**

# ROUGH ELECTRICAL COMPONENTS

## LINE CARD

*BOXES & COVERS, FITTINGS, WEATHERPROOF, HANGING  
& SUPPORT, AND WIRE MANAGEMENT & TERMINATION*



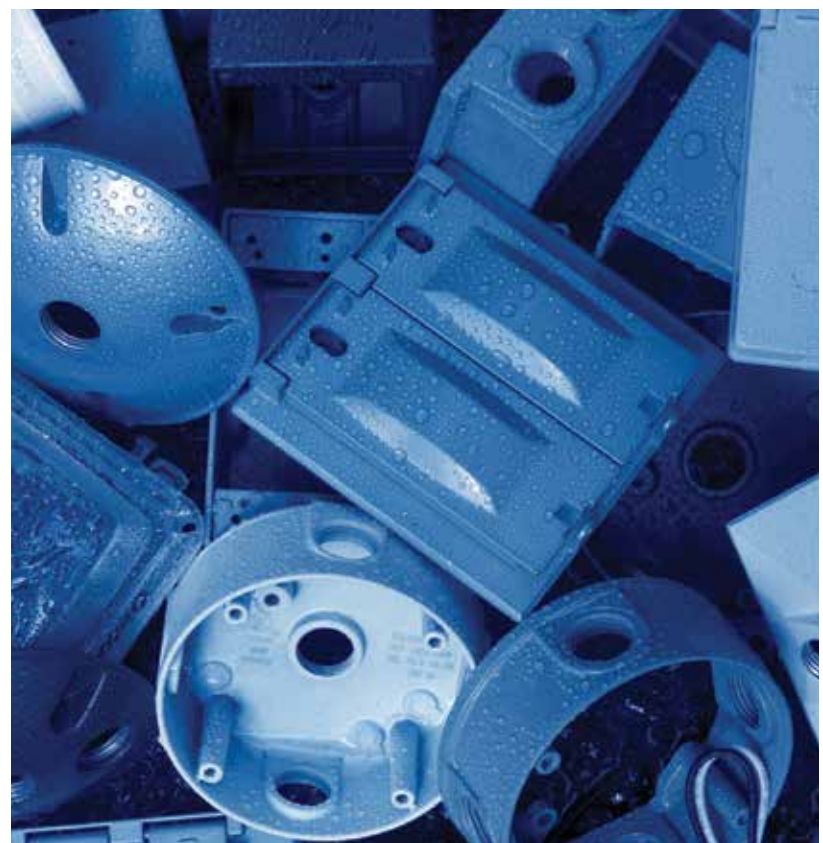
**BUILT FOR DURABILITY.  
BUILT FOR RELIABILITY.  
BUILT FOR WORK.™**

**SOUTHWIRE.COM**





**VERTICALS WE SERVE.  
PRODUCTS FOR EVERY APPLICATION.**



# ELECTRICAL COMPONENTS & ACCESSORIES

Utilizing decades of industry experience, Southwire provides our customers with a comprehensive list of industry standard items, and innovative solutions to save money and drive efficiency at the job site. We invite you to explore our line card and contact us to learn more!





# SOUTHWIRE INNOVATION FOR ELECTRICIANS BY ELECTRICIANS

Southwire's mission is to improve the professional trades by transforming construction methods through innovative products and solutions.



## **SIMPush™**

- EMT SIMPush™ Conduit Fittings
- RIGID SIMPush™ Conduit Fittings
- Liquid Tight SIMPush™ Conduit Fittings
- PVC SIMPush™ Conduit Fittings



## **MEIBB™ BONDING BRIDGE**

- Inline Intersystem Bonding Bridge (built to go to bottom of meter base and prevent puncturing side of house)
- Grounding & Bonding at its best!
- Incorporates 6 terminating points (2x the amount required by the NEC)
- Mounts to enclosures, conduit bodies and inline with conduit



## **EZLB™ 3-PIECE SERVICE ENTRANCE BODY**

- One person installation saving time, money, and eliminating wire damage
- EZ as 1-2-3!



## **ROMEX® BRAND SMARTBOX™ FAN & FIXTURE BOX**

- Only nonmetallic ceiling box that includes (2) 1 inch #8 fixture support screws
- Unmatched versatility
- Heavy duty and extra deep



## **SMARTLB™ CONDUIT BODIES**

- Fiber installs for data centers
- Built-in radius
- Only conduit bodies that are recommended by the BICSI TDMM 13th for telecommunication cable



## **ROMEX® BRAND SMARTBOX™ SHARK TOOTH BOX FIXTURE**

- Perfect sized hole every time
- Raised mounting rings
- Quick & easy install





# BOXES & COVERS



## STEEL BOXES & COVERS

- 4", 4-11/16", 5", and 6" Square Boxes, Extensions, Covers
- Octagon, Boxes, Extension, Covers
- Ceiling Pans & Covers
- Gang Boxes & Covers
- Handy Boxes & Covers – Standard, Jumbo, Mini
- 3" x 2" Switch Boxes
- Masonry Boxes – Gangable & Non-Gangable
- Gang Boxes & Covers
- Device Covers – Standard, Adjustable, Square to Octagon, Drywall, Tile
- Exposed Work/Industrial Covers
- Fixture Covers – Swivel & Standard
- Data/Low Voltage Device Rings/Covers
- Stainless Steel
- Blank Boxes
- Plenum Boxes & Covers
- Life Safety Identification Boxes & Covers
- Concrete Rings & Pour Boxes, Covers
- Ceiling Fan Support Boxes & Braces



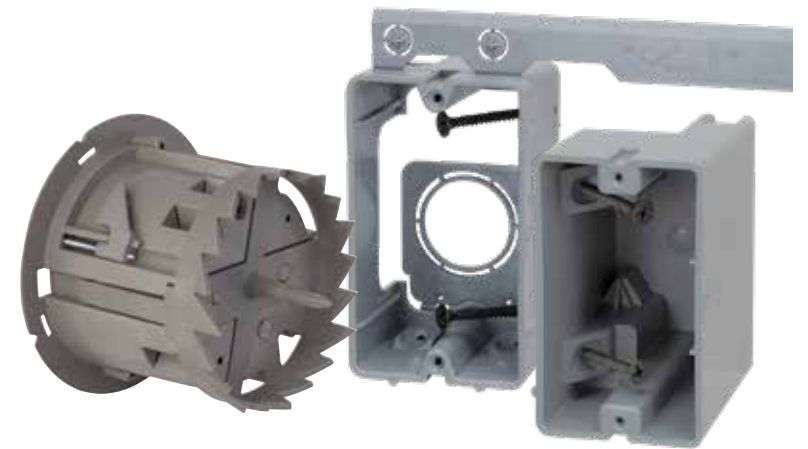
## FLOOR DELIVERY/BOXES & COVERS

- Wood
- Concrete



## PREFAB BAR AND BRACE

- SIMFab™ Bar
- 4-11/16" SQ Boxes



## ROMEX® BRAND SMARTBOX™ BOX

- Wall Mount – New/Old Work
- Ceiling Mount & Fan Support
- Adjustable Depth





# COMMERCIAL, INDUSTRIAL, & RESIDENTIAL FITTINGS



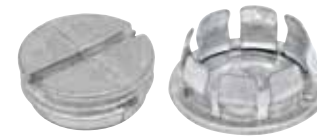
## EMT CONDUIT

- Indoor & Raintight
- Slip-Couplings
- Conduit Bodies
- *SIMPUSH™* Conduit Fittings



## MC/BX CABLE

- Snap-in, Screw in, Squeeze Type, Double Bite
- Romex™ Brand NMSC Connectors
- Metallic and Nonmetallic Connectors
- Straps



## KO SEALS

- Snap-In & Gasketed



## SERVICE ENTRANCE



## NMCS FITTINGS



## RIGID CONDUIT

- Raceway fittings – Malleable Iron, Steel, Stainless Steel
- Conduit Bodies
- Locknuts
- Bushings – Standard, Grounding, Plastic, Split
- Service Caps
- *SIMPUSH™* Conduit Fittings



## LIQUIDTIGHT

- Malleable Iron
- Zinc Die Cast
- Non-Metallic
- *SIMPUSH™* Conduit Fittings



## NIPPLES/ELBOWS/COUPLINGS

- Rigid & EMT – Standard & Special Large Radius



## PORTABLE CORD GRIP FITTINGS – STEEL





# WEATHERPROOF & WHILE-IN-USE COVERS



## WEATHERPROOF BOXES & COVERS

- 1, 2, and 3 Gang Rectangular Boxes
- Gray, White, Bronze
- Round/Ceiling Boxes & Covers
- Flip-Lid Covers – Standard & Multi Directional



## WHILE-IN-USE COVERS

- Nonmetallic 1 and 2 Gang Covers
- Metallic 1 and 2 Gang Covers



## VAPORPROOF LIGHTING

- Par-Lamp Covers and Holders
- LED Lighting



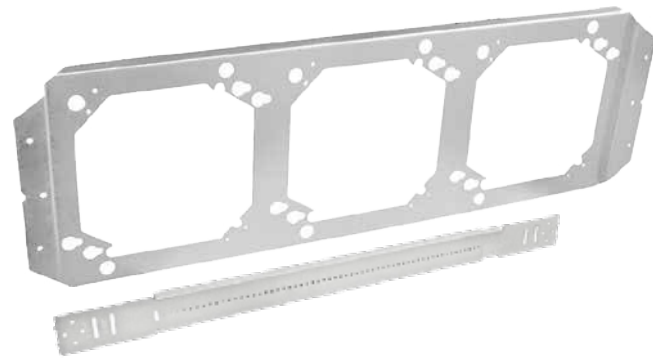


# HANGING & SUPPORT



## CABLE SUPPORT & PROTECTION

- WireTab™ Cable Positioning Device
- Clip-it™ Products
- Romex™ Brand SmartShield™ Nail Guard
- Nail Plates



## BOX POSITION BRACKETS

- On Stud
- Between Stud
- Ceiling Mount & T-Grid



## STRUT

- Framing Fittings
- Clamps & Straps



## J-HOOKS, G-HOOKS, & BRIDLE RINGS

- Magnetic
- Stainless Steel
- Various diameters available



## BEAM CLAMPS, U-BOLTS, FLANGES

- Steel, Malleable Iron, Stainless Steel
- Edge Clamps, Window Clamps



## CLAMPS, STRAPS, HANGERS

- Steel & Stainless Steel
- Spring Steel Fastening





# WIRE MANAGEMENT & TERMINATION



## CABLE TIES

- Indoor / Outdoor
- MIL-SPEC
- HVAC



## ELECTRICAL TAPE

- 9 colors available
- Available in ¾" and 1 ½" widths



## WIRE CONNECTORS

- Winged and Fluted Body Types



## CAUTION TAPE

- Detectable and non-detectable



## GROUNDING

- Pigtails, Ground Screws, Box Clips
- Clamps, Split Bolts, Lugs, Splicers
- Intersystem Bonding Bridge



## ROMEX® BRAND STAPLES

- Non-Insulated & Insulated







**ROMEX® BRAND  
SMARTBOX™ BOXES**



**DRAFTSEAL™ BOX ACCESSORY**



**ROMEX™ BRAND SMART  
SHIELD™ NAIL GUARD**



**4" SQ TO OCTAGON DEVICE RINGS**



**STAINLESS STEEL FITTINGS**



**WIRETAB™ CABLE  
POSITIONING DEVICE**



**CONDUIT 1/2" OR 3/4" EMT  
CONDUIT OR RIGID CONDUIT**



**EMT SLIP COUPLING**

**JUSTIN KLEIN** SOUTH REGIONAL VICE PRESIDENT  
JUSTIN.KLEIN@SOUTHWIRE.COM | (615) 934-9083

**CHARLES STOVER**  
COMPONENTS  
SALES MANAGER  
CHARLES.STOVER@SOUTHWIRE.COM  
(713) 705-7187  
AREAS OF COVERAGE: TX,  
OK, AR, MS, LA, WEST TN

**KIRK NORMAN**  
COMPONENTS  
SALES MANAGER  
KIRK.NORMAN@SOUTHWIRE.COM  
(631) 873-8442  
AREAS OF COVERAGE:  
TN, AL, GA, WEST FL

**WENDY HUG**  
COMPONENTS  
SALES MANAGER  
WENDY.HUG@SOUTHWIRE.COM  
(215) 815-6899  
AREAS OF COVERAGE: FL, SC, NC

**PAUL ROACH**  
COMPONENTS  
SALES MANAGER  
PAUL.ROACH@SOUTHWIRE.COM  
(480) 298-8687  
AREAS OF COVERAGE: CA, NV, AZ,  
NM, WEST TX

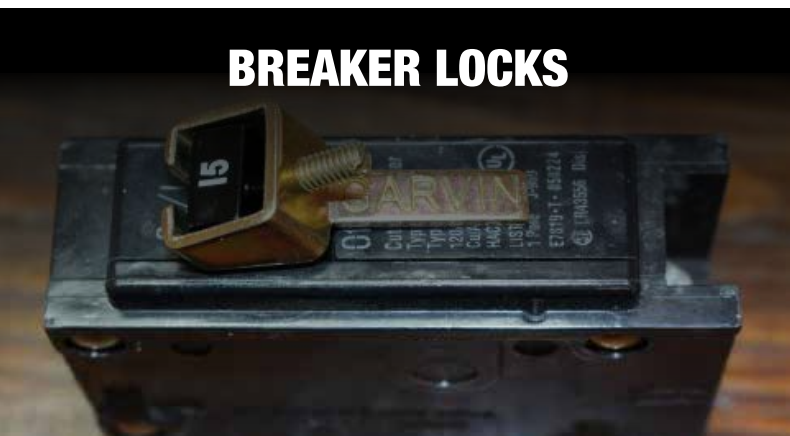
**CARRIE SCHWABACHER** NORTH REGIONAL VICE PRESIDENT  
CARRIE.SCHWABACHER@SOUTHWIRE.COM | (440) 465-6853

**MARK HULL**  
COMPONENTS  
SALES MANAGER  
MARK.HULL@SOUTHWIRE.COM  
(509) 570-8288  
AREAS OF COVERAGE: WA, OR, ID,  
MT, WY, UT, CO, SD, ND, MN, WI

**JAY MCCANN**  
COMPONENTS  
SALES MANAGER  
JAY.MCCANN@SOUTHWIRE.COM  
(973) 809-3953  
AREAS OF COVERAGE: EAST PA,  
NJ, DE, MD, DC

**SCOTT DAVIS**  
COMPONENTS  
SALES MANAGER  
SCOTT.DAVIS@SOUTHWIRE.COM  
(440) 539-0364  
AREAS OF COVERAGE: MI, IN, OH, WV,  
WEST PA, NY, CT, RI, VT, NH, MA, ME

**BRIAN GOODWILL**  
COMPONENTS  
SALES MANAGER  
BRIAN.GOODWILL@SOUTHWIRE.COM  
(440) 465-6853  
AREAS OF COVERAGE NE, KS, IA, IL, MO, KY



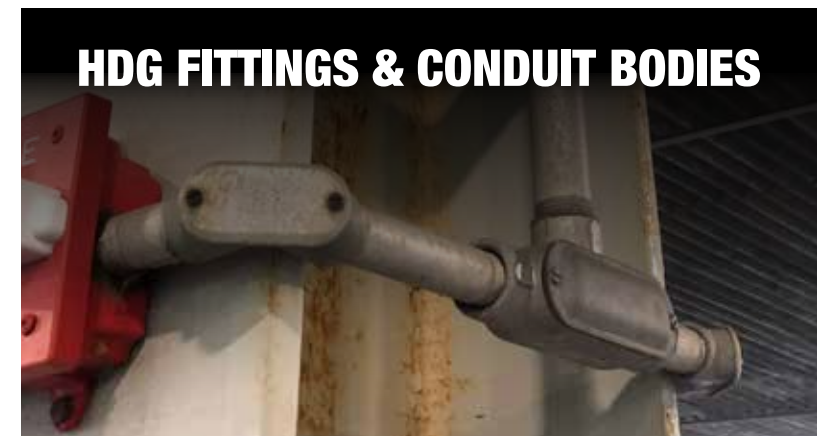
**BREAKER LOCKS**



**STAINLESS STEEL  
BOXES & COVERS**



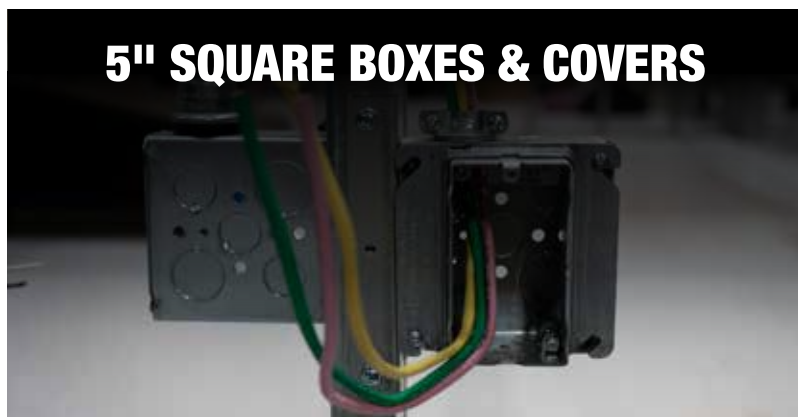
**J-HOOKS & BRIDLE RINGS**



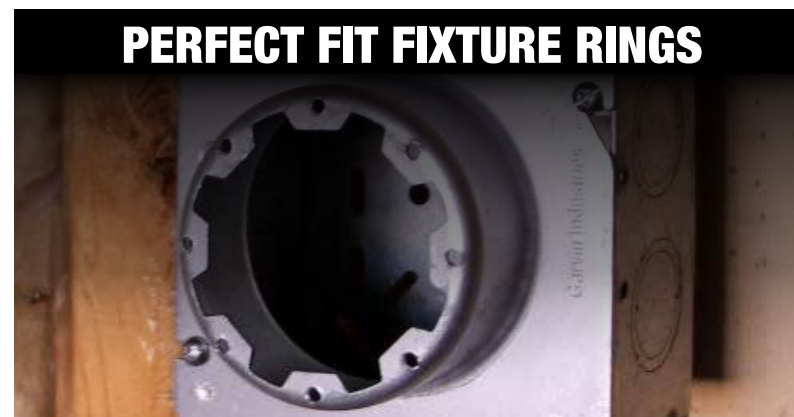
**HDG FITTINGS & CONDUIT BODIES**



**BLANK BOXES**



**5" SQUARE BOXES & COVERS**



**PERFECT FIT FIXTURE RINGS**



**SIMPush™ FITTINGS**





**Southwire™**

# **ROUGH ELECTRICAL COMPONENTS**

## **LINE CARD**

*BOXES & COVERS, FITTINGS, WEATHERPROOF, HANGING  
& SUPPORT, AND WIRE MANAGEMENT & TERMINATION*

## **GET SOCIAL WITH US:**



**/SOUTHWIRETOOLS  
/SOUTHWIRETOOLSLATINO**



**@SOUTHWIRETOOLS**



**@SOUTHWIRETOOLS**



**SOUTHWIRETOOLS**

**SOUTHWIRE.COM | 1-855-SWTTOOLS**

All Trademarks or Registered Trademarks (TM/®) are owned or licensed by Southwire Company.  
Any other TM/®- Trademark or Registered Trademark of Southwire Company.