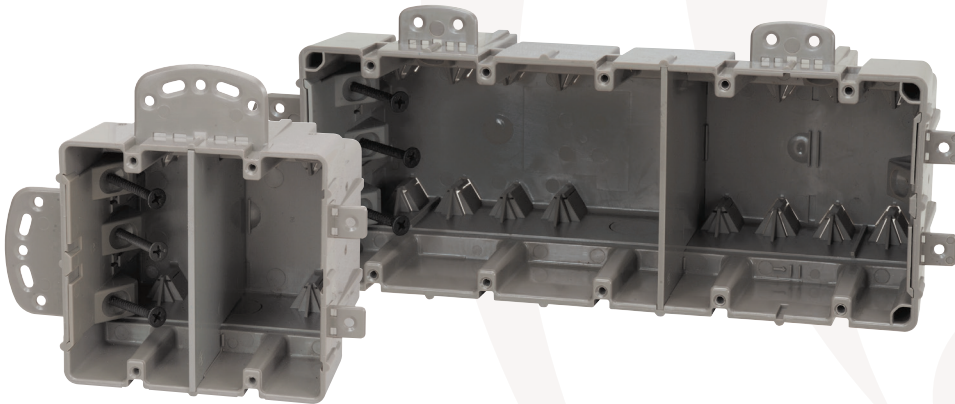




# Southwire™

## Romex® BRAND **SMARTBOX™** MULTI-MOUNT

An even more user friendly device box. Romex® Brand SmartBox™ Multi-Mount Device Boxes are a hybrid of the Original Device Boxes. Like the Originals, Multi-Mount boxes are great for both new work and old work applications. Unlike the Originals, these boxes offer additional features such as removable nail tabs for metal stud mounting, removable interior mounting blocks to allow for more cubic inch in the box and built-in mounting blocks on the top end of the box for vertical mounting. Additionally, ½" knock outs allow for ENT or PVC conduit connections, while low voltage wall dividers allow for mixed voltages in the same box. The culmination of these added features creates an even more user-friendly device box.



### VERTICAL & HORIZONTAL MOUNTING

### EXTRA THICK WALL MATERIAL FOR STABILITY & RIGIDITY

### LOW VOLTAGE WALL DIVIDERS ALLOW MIXED VOLTAGES IN THE SAME BOX

### UL APPROVED FOR SINGLE SIDE MOUNTING (EXTRA SUPPORT BAR NOT REQUIRED)

### USE FOR FLAT SCREEN TV APPLICATIONS AND HOME THEATER CENTERS



MODEL #	UPC	DESCRIPTION	HEIGHT	WIDTH	DEPTH	WEIGHT	TRADE SIZE	CUBIC INCH	MASTER QTY	MASTER WEIGHT
MSBMMT1G	784297017704	1 Gang Device Box	3.82"	2.40"	3.50"	0.24 lbs.	1 Gang	21.0	50	12.00 lbs.
MSBMMT2G	784297017711	2 Gang Device Box	3.82"	4.80"	3.50"	0.43 lbs.	2 Gang	37.0	30	12.85 lbs.
MSBMMT3G	784297017728	3 Gang Device Box	3.82"	5.90"	3.50"	0.51 lbs.	3 Gang	55.0	20	10.25 lbs.
MSBMMT4G	784297017735	4 Gang Device Box	3.82"	7.71"	3.50"	0.66 lbs.	4 Gang	67.0	20	13.12 lbs.
MSBMMT5G	784297017742	5 Gang Device Box	3.82"	9.52"	3.50"	1.06 lbs.	5 Gang	91.5	4	4.25 lbs.
MSBMMT6G	784297017759	6 Gang Device Box	3.84"	11.39"	3.53"	1.19 lbs.	6 Gang	110.0	4	4.75 lbs.

**BUILT FOR DURABILITY.  
BUILT FOR RELIABILITY.  
BUILT FOR WORK.™**

1-855-798-6657 | SOUTHWIRE.COM

©2021 Southwire Company, LLC. All rights reserved.  
®/TM - ®Registered Trademark and ™Trademark of Southwire Company, LLC