

Report of Test

LLIA001617-003

Integrating Sphere Report

Catalog Number: LPT27W-850-E39-G4 High Setting (27W)

Mogul-base retrofit lamp mounted VBU, formed plastic housing, formed aluminum heatsinks, clear plastic enclosures. 112 white LEDs, 6 CLW08E-27WC-16C1B-2835-A0 LED boards with 16 LEDs each and one CLW08E-27WD-16C1B-2835-A0 LED board with 16 LEDs

One internal LED driver



Performance Summary

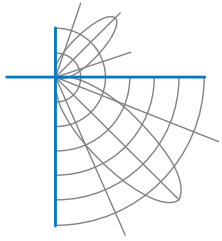
Voltage	120.0 Vac
Current	0.2195 A
Power	25.84 W
Frequency	59.99 Hz
Power Factor	0.981
Current THD	10.6 %
Total Luminous Flux	3974.1 lm
Efficacy	153.8 lm/W
Chromaticity (x,y)	(0.3408, 0.3517)
(u',v')	(0.2085, 0.4841)
Duv	0.0018
CCT	5166 K
CRI (Ra)	82
R9	3
TM-30: Rf	81
TM-30: Rg	96
TM-30: Rcs,h1	-13

Prepared For:

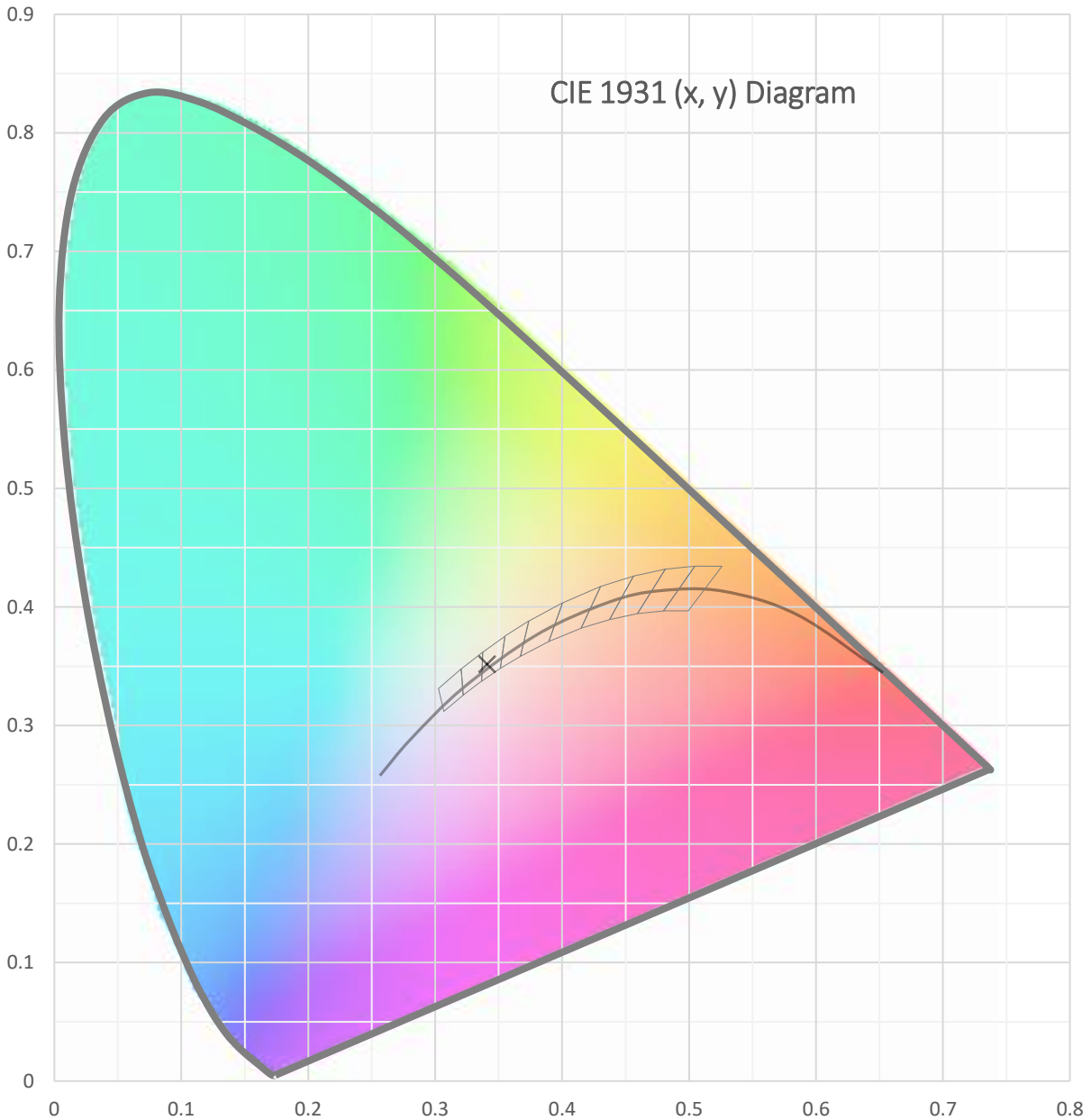
Topaz Lighting Corp
925 Waverly Avenue
Holtsville, NY 11742, USA

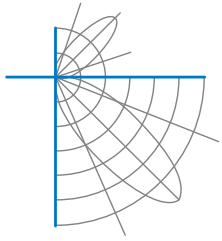
Test date: 12/27/2021
Report date: 12/30/2021

Signed: _____

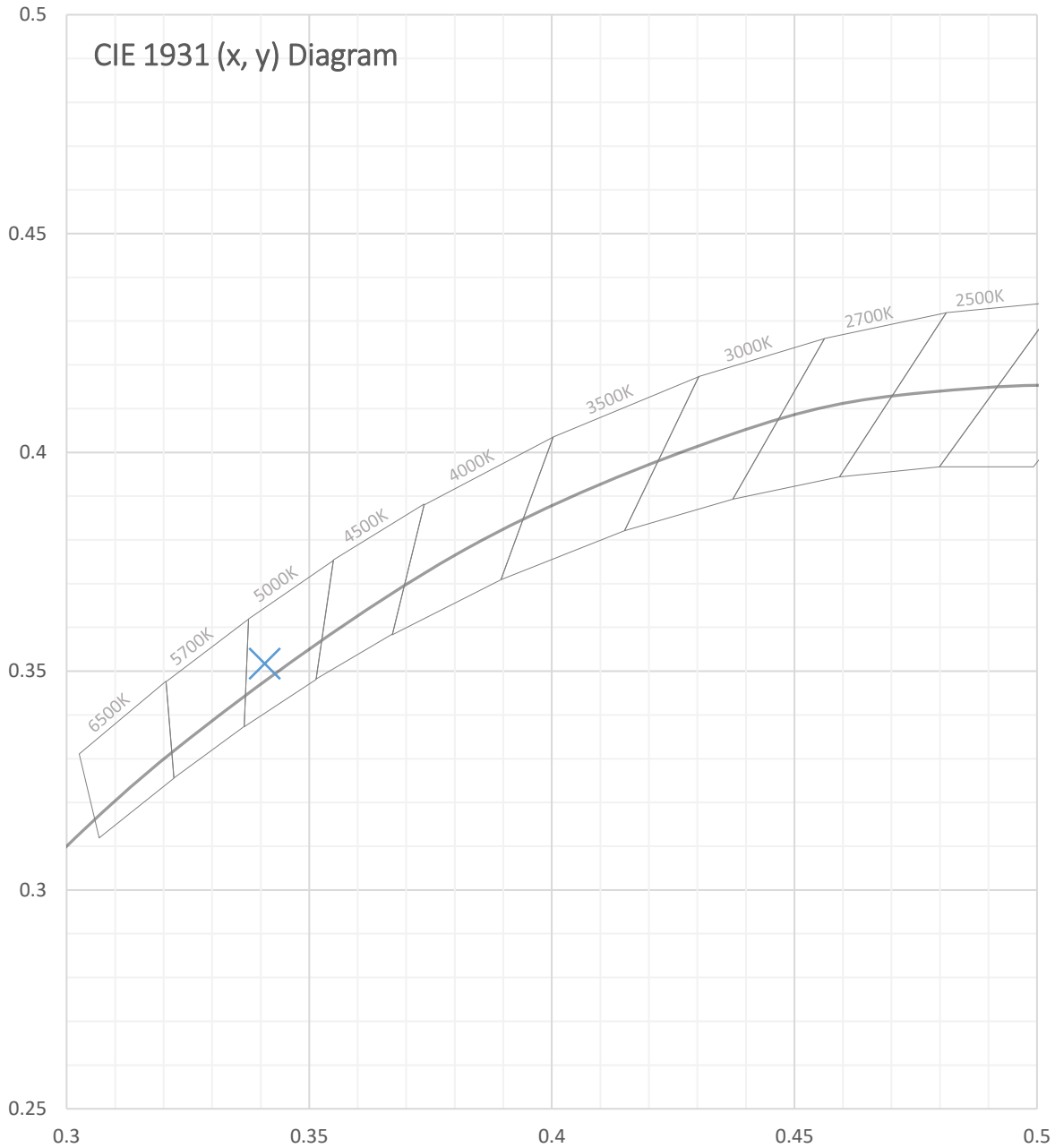


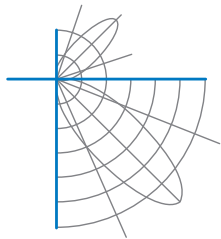
Test Report Number: LLIA001617-003





Test Report Number: LLIA001617-003





Test Report Number: LLIA001617-003

Total Radiant Flux	12.48 W
Total Luminous Flux	3974.1 Lm
Chromaticity CIE 1931 (x, y)	(0.3408, 0.3517)
Chromaticity CIE 1976 (u', v')	(0.2085, 0.4841)
Correlated Color Temperature (CCT)	5166 K
Color Rendering Index (Ra)	82
R1	80
R2	86
R3	91
R4	82
R5	81
R6	81
R7	86
R8	67
R9	3
R10	68
R11	82
R12	62
R13	82
R14	95
TM-30: Rf	81
TM-30: Rg	96
TM-30: Rcs,h1	-13
Distance from Planckian Locus (Duv)	0.0018
Scotopic/Photopic Ratio ‡	1.963

Electrical Data

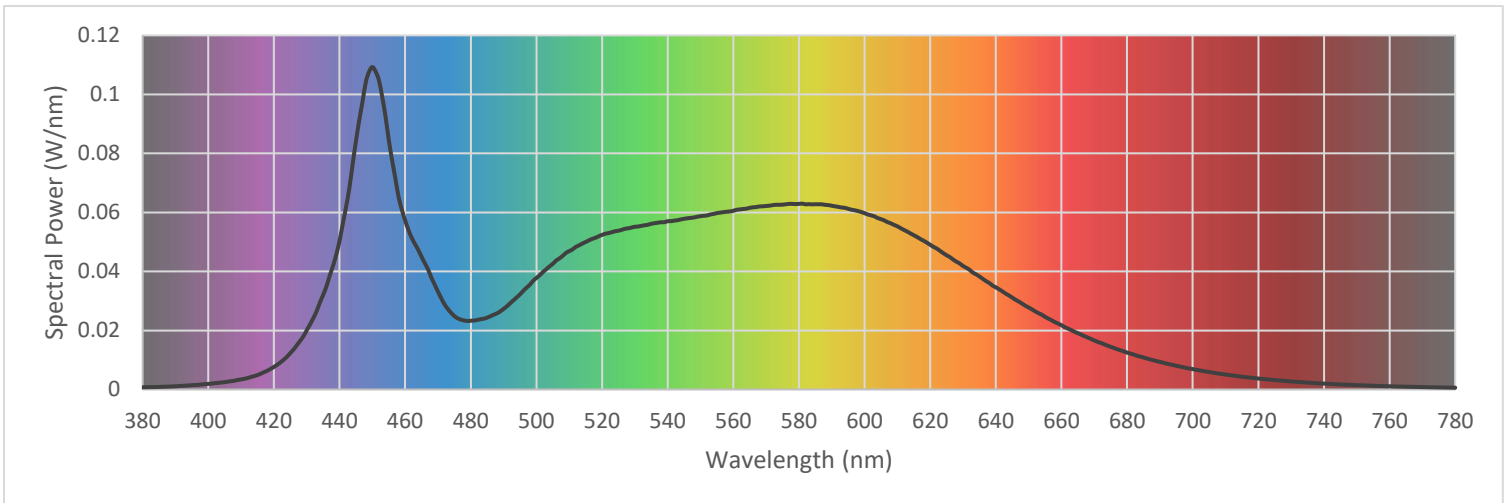
Voltage	120.0 Vac
Current	0.2195 A
Power	25.84 W
Frequency	59.99 Hz
Power Factor	0.981
Current THD	10.6 %

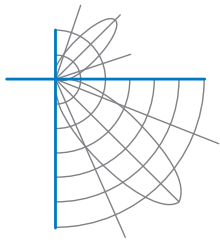


Test Report Number: LLIA001617-003

Summary Spectral Power Distribution (wavelength - nm, spectral power - W/nm)

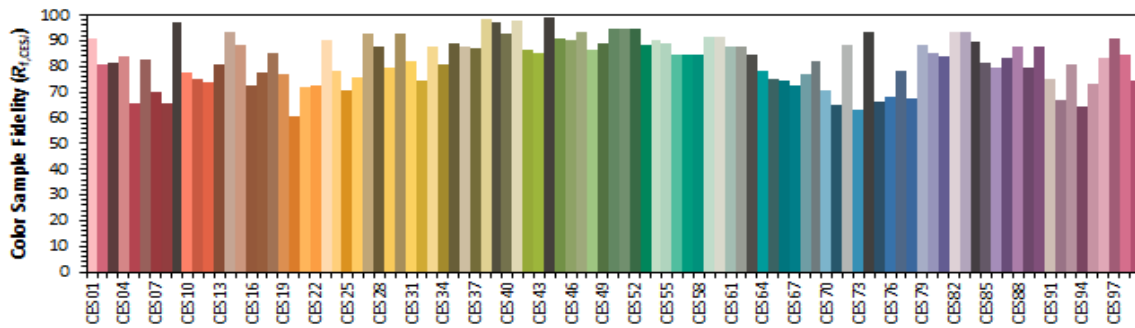
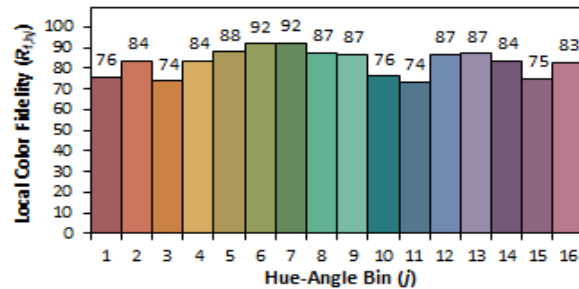
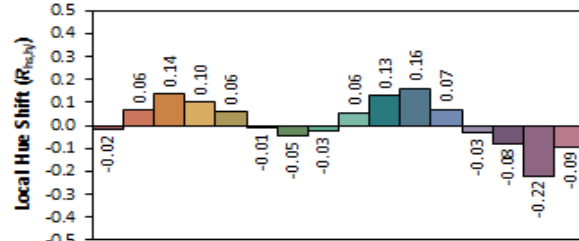
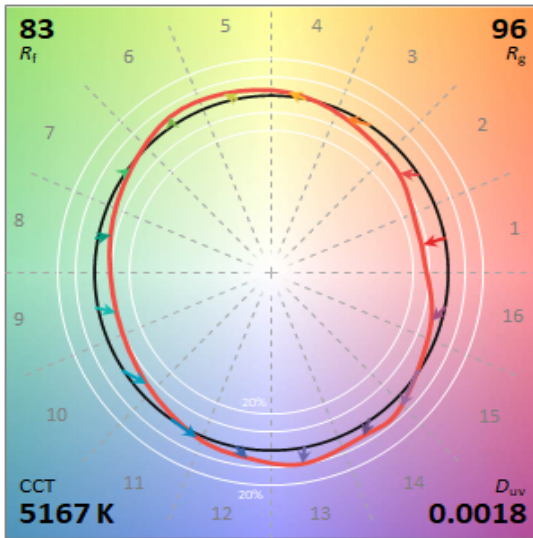
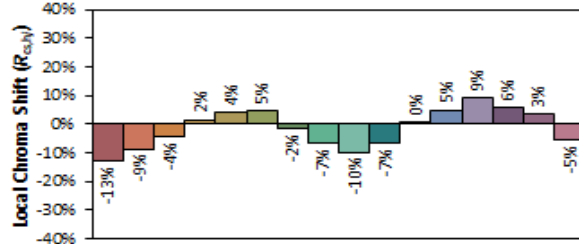
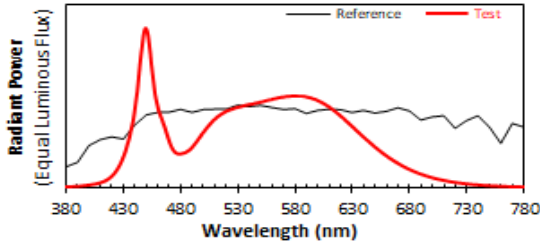
380	0.000761	480	0.023288	580	0.062898	680	0.012505
385	0.000872	485	0.024351	585	0.062770	685	0.010837
390	0.001080	490	0.027317	590	0.062260	690	0.009330
395	0.001457	495	0.032243	595	0.061223	695	0.008021
400	0.001888	500	0.037805	600	0.059746	700	0.006898
405	0.002495	505	0.042586	605	0.057720	705	0.005919
410	0.003400	510	0.046877	610	0.055299	710	0.005067
415	0.004888	515	0.049976	615	0.052263	715	0.004338
420	0.007632	520	0.052389	620	0.049033	720	0.003708
425	0.012347	525	0.053795	625	0.045473	725	0.003175
430	0.020061	530	0.055144	630	0.041857	730	0.002732
435	0.032011	535	0.056153	635	0.038289	735	0.002326
440	0.050398	540	0.057033	640	0.034616	740	0.001988
445	0.084225	545	0.057830	645	0.031131	745	0.001712
450	0.109273	550	0.058718	650	0.027780	750	0.001470
455	0.084588	555	0.059760	655	0.024611	755	0.001258
460	0.057218	560	0.060554	660	0.021775	760	0.001089
465	0.044931	565	0.061553	665	0.019065	765	0.000931
470	0.033128	570	0.062178	670	0.016617	770	0.000804
475	0.024858	575	0.062634	675	0.014453	775	0.000696
						780	0.000603





Test Report Number: LLIA001617-003

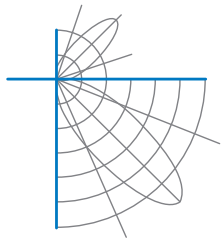
IES TM-30 Details



Notes:

x 0.3408
y 0.3516
u' 0.2085
v' 0.4840

CIE 13.3-1995
(CRI)
R_a 82
R_s 3



Test Report Number: LLIA001617-003

Test Equipment Configuration: LightLab International Allentown 2m Integrating Sphere
Measurements acquired using a Labsphere CDS 2600 spectroradiometer
Testing was performed using 4π geometry

Test Temperature: 24.7 °C

Test Procedure: Tested in accordance with the applicable sections of:
LM-79-19, LM-78-20, LM-58-20, ANSI_ANSI C78.377-2017, TM-30-20

Significance: The laboratory has not participated in the selection of samples to be tested.
All testing is performed on the understanding that the significance of the report is limited to the extent that the test sample is representative of production units.

Notes: The measurements and other derived quantities contained in this report are based on the absolute data as measured.

Prorating the performance of the sample for the use of other component combinations (such as lamp / LED / Ballast / driver), or for use in different environmental conditions than that tested, may produce erroneous results.

This report is free of erasures and corrections

This report may contain data that are not covered by the NVLAP accreditation. Quantities marked with ‡ are not covered.

This report must not be used by the customer to claim product certification, approval or endorsement by NVLAP, NIST, or any agency of the Federal Government.