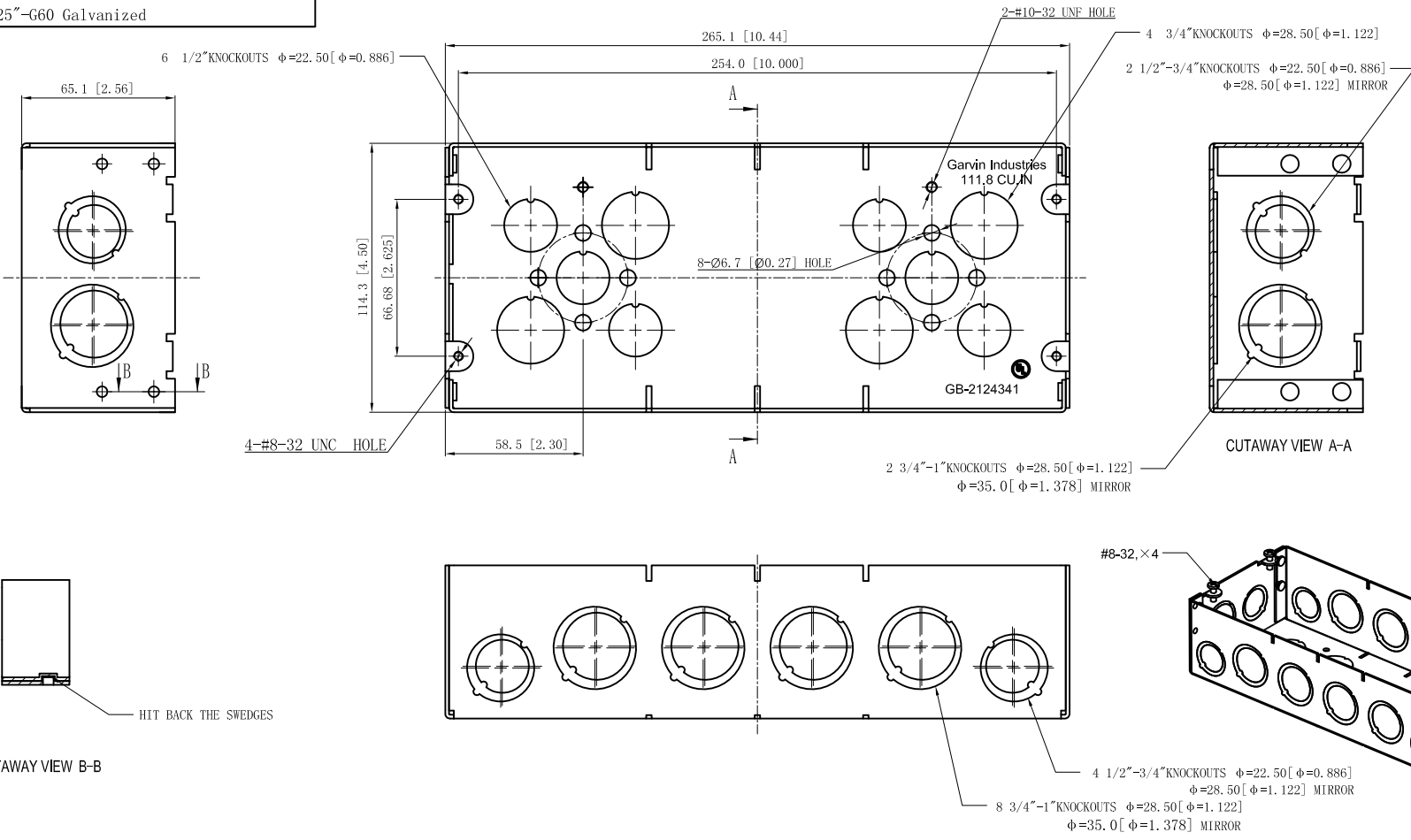


SIDES	BOTTOM
6 1/2"-3/4" KNOCKOUTS	6 1/2" KNOCKOUTS
10 3/4"1" KNOCKOUTS	4 3/4" KNOCKOUTS
4 PCS 8-32X1/2 Screws Installed	
Material:Steel-0.0625"-G60 Galvanized	



This data sheet is for reference only .GARVIN INDUSTRIES reserves the right to make changes to the design without prior notice.

DESCRIPTION
TRADE REFERENCE TERMS

STANDARD PACKING
20 PCS

TITLE		GARVIN INDUSTRIES	
2-1/2" DEEP MULTI-GANG BOXES			
SIZE	DWG NO.		REV
A4		GB-2124341	C
DATA SHEET			