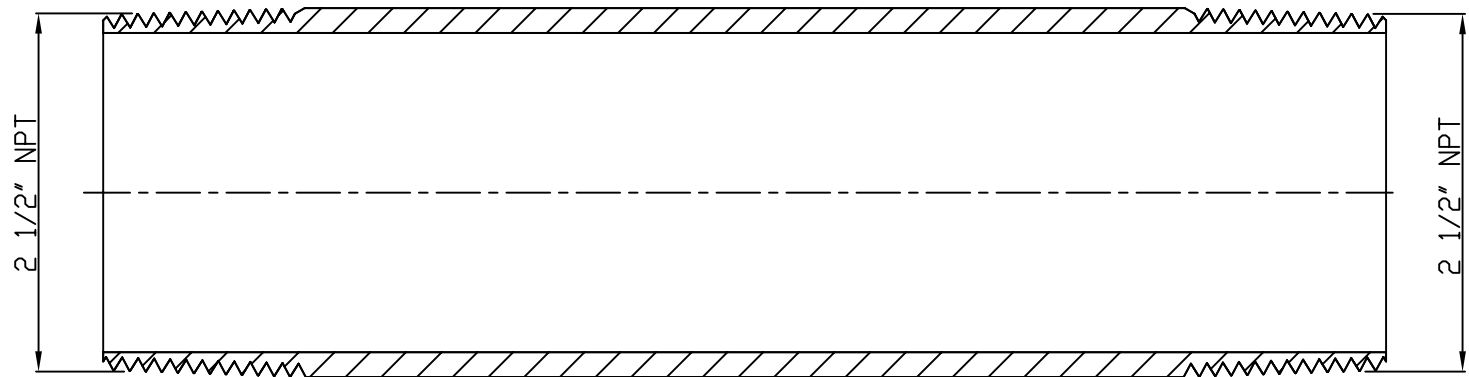
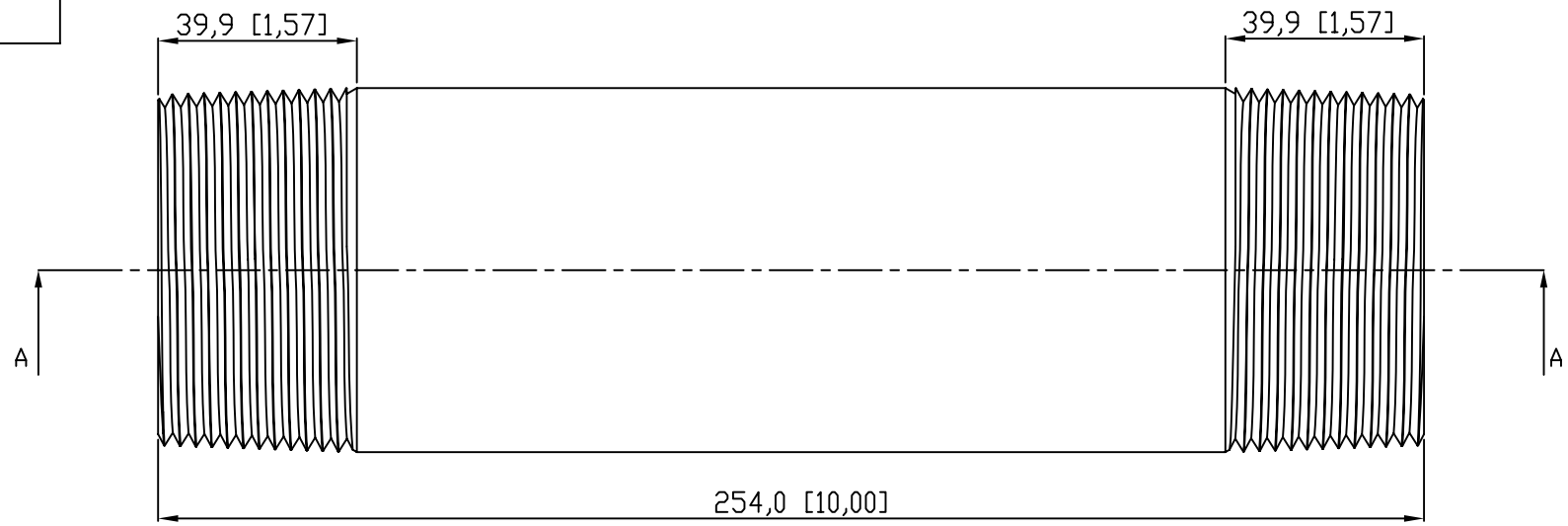
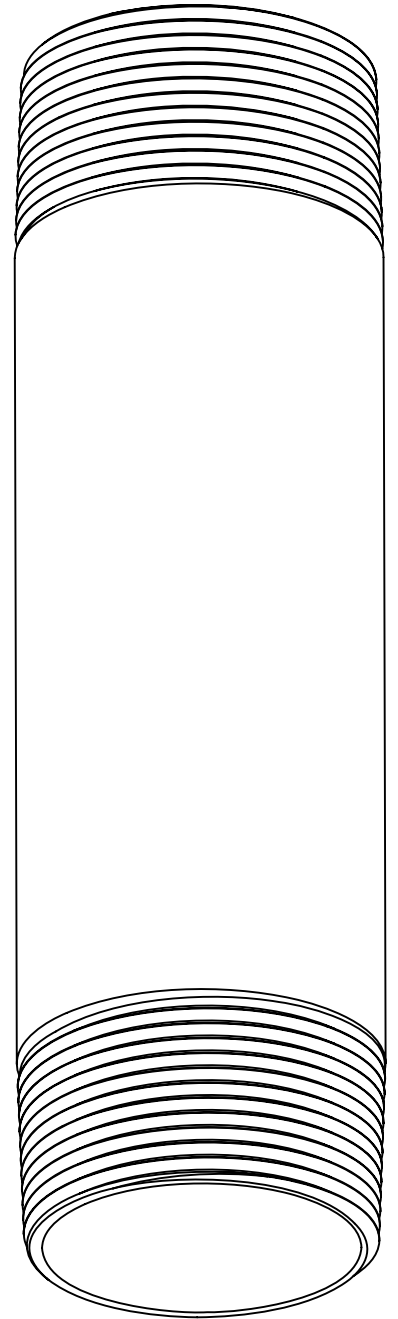


SIDES	BOTTOM
Material: Steel-(C1008-C1018) Galvanized	



VIEW A-A



This data sheet is for reference only .GARVIN INDUSTRIES reserves the right to make changes to the design without prior notice.

DESCRIPTION
TRADE REFERENCE TERMS

STANDARD PACKING

GARVIN INDUSTRIES		
TITLE RIGID COND NIPPLE		
SIZE A4	DWG NO. DS-RN-2501000	REV A