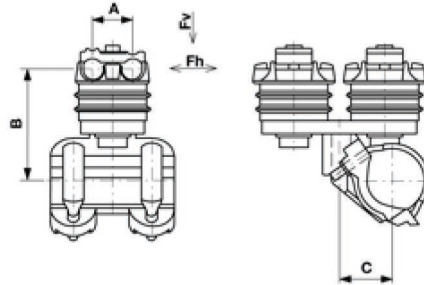
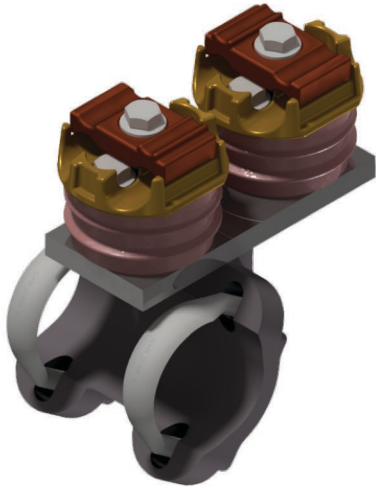


# Messenger cable suspension double, insulated, rotatable, Reinforced, to pipe 2.5", cable Ø max. 21 mm

Item number D3117-02



## Dimensions

B: 135 mm  
A: 49 mm  
C: 61.9 mm

## Material and weight

Material: Al/SST/Synth.

## Loads

Breaking load  $F_h$ :  $\pm 28$  kN  
Breaking load  $F_v$ :  $\pm 19$  kN

## Specification

Operating voltage: max. 1500 V DC, max. 1000 V AC

## Comments

- The installation side of the messenger cable has to be selected so that the lateral force caused by the curve pull act in direction of the cap screw
- For cable diameter
- $\varnothing = 10-16$  mm and 21 mm
- Use for other cable diameter on request



**Southwire™**



A COLAS RAIL COMPANY

Contact Us: [Transit@southwire.com](mailto:Transit@southwire.com)