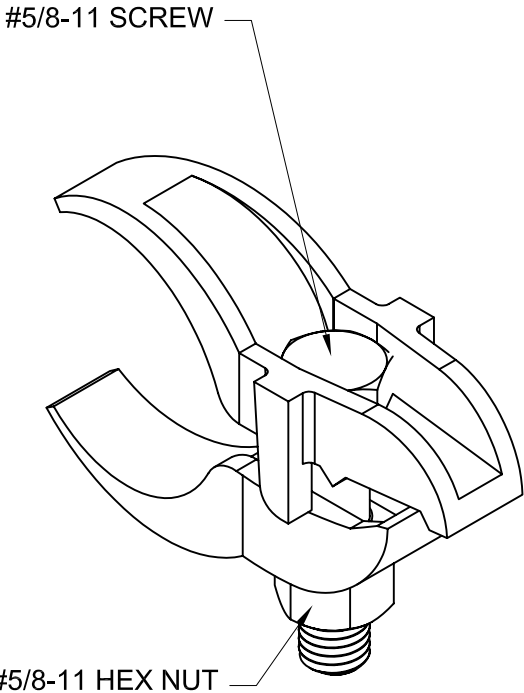
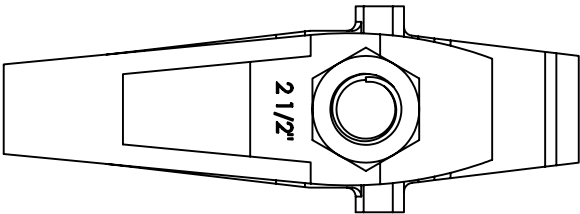
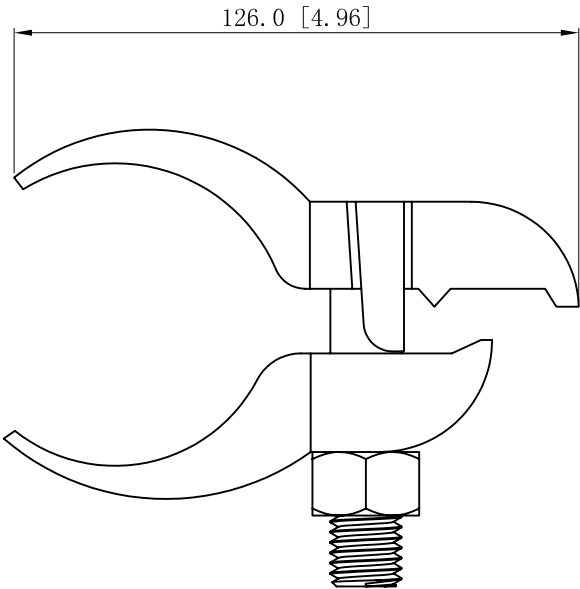
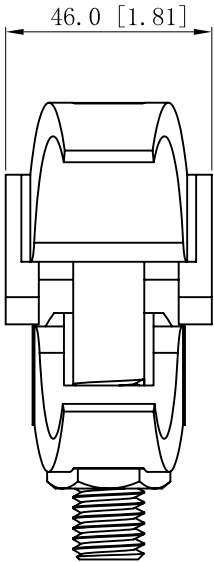


SIDES	BOTTOM
1 pcs #5/8-11×2-3/4 screw install	
1 pcs #5/8-11 hex nut install	
Material: malleable casting,Zinc plated	



DESCRIPTION
TRADE REFERENCE TERMS

STANDARD PACKING	This data sheet is for reference only .GARVIN INDUSTRIES reserves the right to make changes to the design without prior notice.		
	GARVIN INDUSTRIES		
	TITLE CONDUT CLAMPS		
	SIZE A4	DWG NO. PAR250	REV
10 PCS		DATA SHEET	