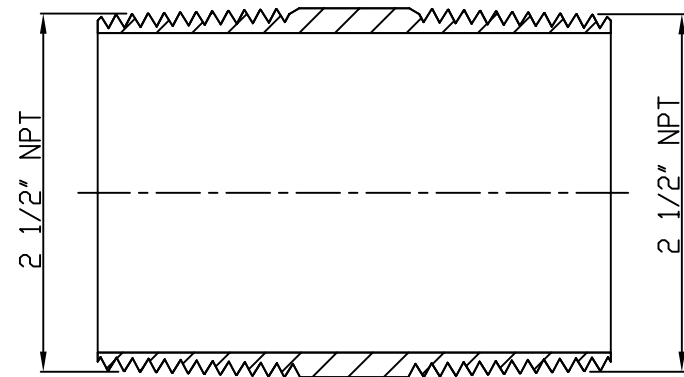
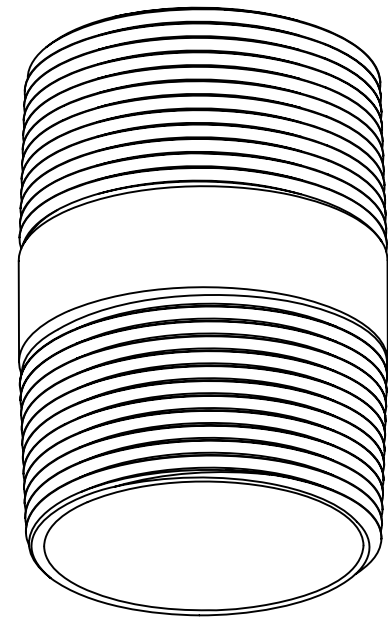
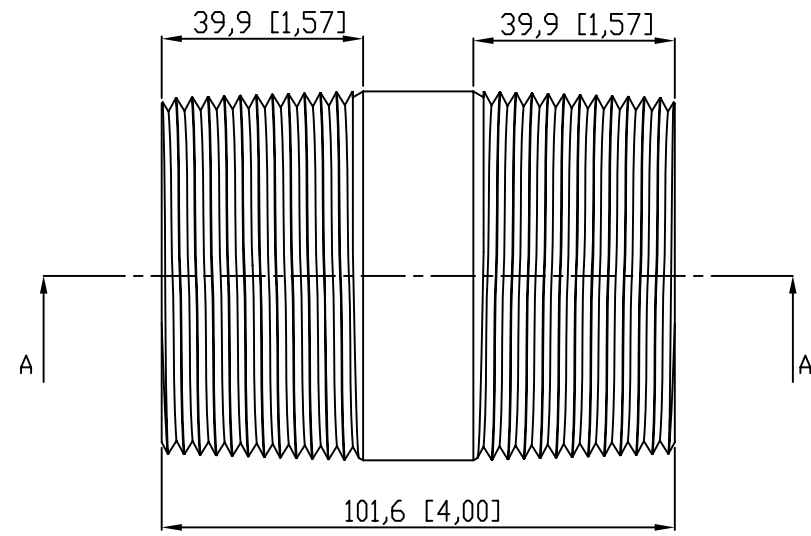


SIDES	BOTTOM
Material: Steel-(C1008-C1018) Galvanized	



VIEW A-A

This data sheet is for reference only .GARVIN INDUSTRIES reserves the right to make changes to the design without prior notice.

DESCRIPTION
TRADE REFERENCE TERMS

STANDARD
PACKING

GARVIN INDUSTRIES

TITLE
RIGID COND NIPPLE

SIZE A4	DWG NO. DS-RN-250400	REV A
------------	-------------------------	----------