

LED Wall Packs

TRADITIONAL



The Perfect Solution for Commercial and Residential Applications

Topaz's traditional wall packs are the ideal solution for wide area illumination of parking areas, entry ways, loading docks, and pathways. This wall pack provides maximum illumination and compares well to traditional HID as a direct replacement. The wall packs feature a corrosion resistant housing, impact resistant glass lens, universal input voltage and high efficacy LEDs.

FEATURES

- Cast aluminum housing with internal heatsink
- Bronze polyester powder coat paint finish (other color options available)
- Shatter-resistant borosilicate lens
- Five NPT ½" threaded hubs for additional mounting or control options (small size models have four hubs)
- 5 year warranty
- 0-10V driver standard for dimming and building control
- Battery backup models available for emergency lighting in the event of a power failure
- Optional photocell, wireguards and shields available

APPLICATIONS

- Condos/Apartments
- Hotels
- Security Lighting
- Exterior Walls





Job Name/Title: _____ Catalog Number _____

Contractor: _____ Notes: _____

LED Wall Packs TRADITIONAL

GENERAL SPECIFICATIONS

Input Voltage, Frequency: 120-277V, 60Hz
Power Factor, THD %: >0.9, <20%
Dimmable: 0-10V¹
Surge protection: 6kV
Emergency Backup: EM models available in 5000K
Photocell: Optional

Efficacy: Up to 144 LPW
CRI: 80
IES Distribution: Type IV
Functional Life (L70): 50,000 Hours
Location Rating: Wet
IP Rating: IP65
Ambient Operating Temperature: -22°F to 112°F

ITEM SPECIFICATIONS / ORDER INFO

Catalog Number	Order Code	UPC	Lumens	Wattage	Input Current@ 120V/277V	CCT	DLC Classification	DLC ID
SMALL WALL PACK								
F-WP-28W/40K/BZ/HE	75205	751338035348	3,560	28W	0.26/0.11A	4000K	Standard	PLBR6HE248G6
F-WP-28W/50K/BZ/HE	74491	751338029088	3,640	28W	0.26/0.11A	5000K	Standard	PLJXPUCYRNTTP
F-WP-40W/40K/BZ/HE	75206	751338035355	5,380	40W	0.37/0.16A	4000K	Standard	PLTKZV67X4EV
F-WP-40W/50K/BZ/HE	74493	751338029095	5,540	40W	0.37/0.16A	5000K	Standard	PLOGTXC3TK8S
LARGE WALL PACK								
F-WP-50W/40K/BZ/HE	75207	751338035362	6,880	50W	0.46/0.20A	4000K	Standard	PLSOCIJCQ150
F-WP-50W/50K/BZ/HE	74495	751338029101	7,065	50W	0.46/0.20A	5000K	Standard	PLB1O8R42MVI
F-WP-60W/40K/BZ/HE	75208	751338035386	8,055	60W	0.56/0.24A	4000K	Standard	PLFPM3XDU6LL
F-WP-60W/50K/BZ/HE	74497	751338029118	8,280	60W	0.56/0.24A	5000K	Standard	PLCUC9CKHISB
F-WP-100W/40K/BZ/HE	75209	751338035393	13,810	100W	0.93/0.40A	4000K	Standard	PLVDQPWPRA98
F-WP-100W/50K/BZ/HE	74498	751338029125	14,400	100W	0.93/0.40A	5000K	Premium	PLHW8AG2V00J
F-WP-120W/40K/BZ/HE	75210	751338035409	16,320	120W	1.11/0.48A	4000K	Standard	PLLVA2O0L1AE
F-WP-120W/50K/BZ/HE	74499	751338029132	16,945	120W	1.11/0.48A	5000K	Premium	PL2KQ4RHE1YT
WALL PACKS WITH EMERGENCY BACKUP								
F-WP-40W/50K/BZ/EM	74524	751338029316	5,540	40W	0.37/0.16A	5000K	Standard	PLOGTXC3TK8S
F-WP-50W/50K/BZ/EM	74525	751338029347	7,065	50W	0.46/0.20A	5000K	Standard	PLB1O8R42MVI
F-WP-60W/50K/BZ/EM	74526	751338029408	8,280	60W	0.56/0.24A	5000K	Standard	PLCUC9CKHISB
F-WP-100W/50K/BZ/EM	74528	751338029439	14,400	100W	0.93/0.40A	5000K	Premium	PLHW8AG2V00J
F-WP-120W/50K/BZ/EM	74529	751338029453	16,945	120W	1.11/0.48A	5000K	Premium	PL2KQ4RHE1YT

NOMENCLATURE

Example: F-WP-28W/40K/BZ/HE

F = Fixture - WP = Wall Pack - 28 = 28 Watts / 40K = 4000K CCT / BZ = Bronze Finish / HE = High Efficiency
 40 = 40 Watts / 50K = 5000K CCT / EM = Emergency Backup
 50 = 50 Watts
 60 = 60 Watts
 100 = 100 Watts
 120 = 120 Watts

ACCESSORIES (SOLD SEPARATELY)

Catalog Number	Order Code	UPC	Description
F-WP/HE/GUARD/S-95	70272	751338035492	Small Wire Guard For use with 28W & 40W LED Wall Packs
F-WP/HE/GUARD/L-95	70273	751338035508	Large Wire Guard For use with 50W, 60W, 100W, 120W LED Wall Packs
F-WP/HE/SHIELD/S-95	70274	751338035515	Small Shield For use with 28W & 40W LED Wall Packs
F-WP/HE/SHIELD/L-95	70275	751338035546	Large Shield For use with 50W, 60W, 100W, 120W LED Wall Packs
WD-SP	79200	751338000308	Surge Protector
F-WP-PC-95	72748	751338030671	Button Photocell, 120-277V
F-WP-PC-ADJ-95	72749	751338030688	Adjustable Pencil Photocell, 120-277V

NOTES:

¹Dimming with standard 0-10V control system or wall dimmers such as Leviton IP710, DS710 or Lutron DVSTV. Dimming complies with IEC60929 Annex E. Fixture may not be compatible with all dimmers. Visit www.topaz-usa.com for up-to-date dimmer compatibility information.

Specifications subject to change without prior notice. Replacement wattage shown depends on application and fixture.

This device complies with Part 15 of the FCC Rules. Operation is subject to the following two conditions: (1) this device may not cause harmful interference, and (2) this device must accept any interference received, including interference that may cause undesired operation.

WARNING: Some products included in this specification sheet may be subject to the warning requirements of California's Proposition 65. Please refer to your product packaging for more information.

December 2020



Job Name/Title: _____ Catalog Number _____

Contractor: _____ Notes: _____

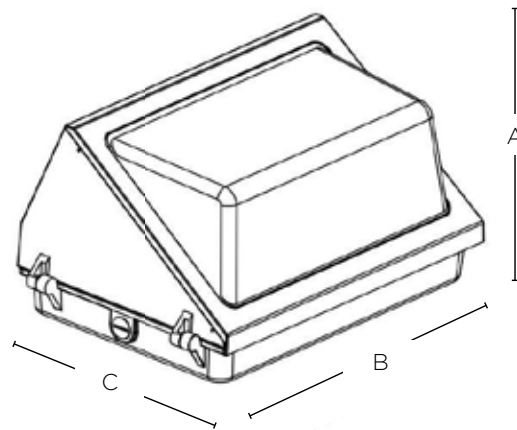
LED Wall Packs TRADITIONAL

ENERGY SAVINGS

Catalog Number	LED Watts	HID Replacement Watts	Watts Saved	Yearly Savings	5 Year Savings
Based on 12 hours/day and 11¢/kwh					
F-WP-28W/XXK/BZ/XX	28W	100W	72W	\$35	\$173
F-WP-40W/XXK/BZ/XX	40W	150W	110W	\$53	\$265
F-WP-50W/XXK/BZ/XX	50W	175W	125W	\$60	\$301
F-WP-60W/XXK/BZ/XX	60W	250W	190W	\$92	\$458
F-WP-100W/XXK/BZ/XX	100W	320W	220W	\$106	\$530
F-WP-120W/XXK/BZ/XX	120W	400W	280W	\$135	\$675

PRODUCT DIMENSIONS / LINE DRAWING

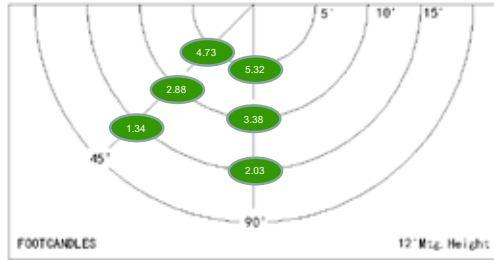
Catalog Number	(A)	(B)	(C)	Weight
F-WP-28W/xxK/BZ/XX	6.6"	10.6"	7.6"	5.7 Lbs.
F-WP-40W/xxK/BZ/XX	6.6"	10.6"	7.6"	5.7 Lbs.
F-WP-50W/xxK/BZ/XX	7.7"	14.7"	9.5"	9.5 Lbs.
F-WP-60W/xxK/BZ/XX	7.7"	14.7"	9.5"	9.5 Lbs.
F-WP-100W/xxK/BZ/XX	7.7"	14.7"	9.5"	9.5 Lbs.
F-WP-120W/xxK/BZ/XX	7.7"	14.7"	9.5"	9.5 Lbs.



LED Wall Packs TRADITIONAL

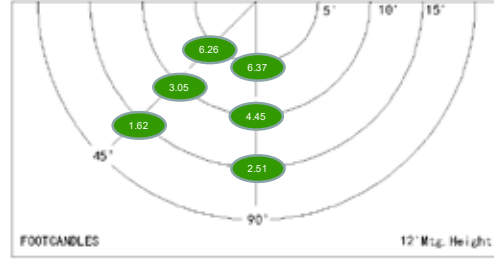
PHOTOMETRICS (STANDARD MODELS, FULL LIGHT OUTPUT)

28W



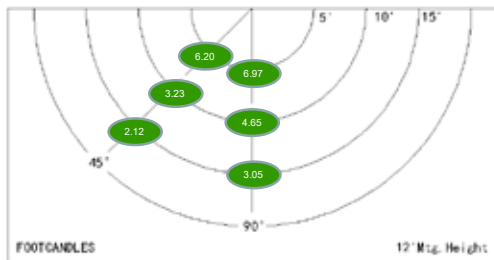
WALL PACK FOOTCANDLES ON THE GROUND							
Wtg. Hgt.	90°			45°			Avg. FCs 450 sq.ft.
	5'	10'	15'	5'	10'	15'	
12'	5.32	3.38	2.03	4.73	2.88	1.34	3.28
14'	4.05	2.57	1.93	3.52	1.85	1.11	2.51
30'	0.68	0.49	0.31	0.49	0.33	0.20	0.42

40W



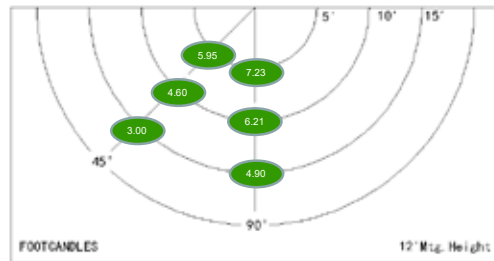
WALL PACK FOOTCANDLES ON THE GROUND							
Wtg. Hgt.	90°			45°			Avg. FCs 450 sq.ft.
	5'	10'	15'	5'	10'	15'	
12'	6.37	4.45	2.51	6.26	3.05	1.62	4.04
14'	4.95	4.01	2.26	4.82	2.74	1.46	3.37
30'	0.91	0.80	0.61	0.77	0.47	0.29	0.64

50W



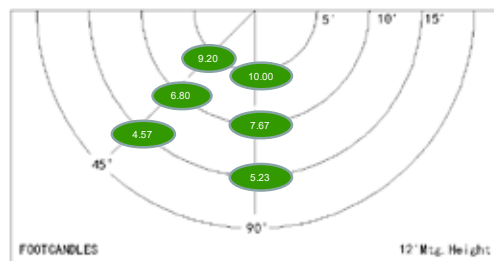
WALL PACK FOOTCANDLES ON THE GROUND							
Wtg. Hgt.	90°			45°			Avg. FCs 450 sq.ft.
	5'	10'	15'	5'	10'	15'	
12'	6.97	4.65	3.05	6.20	3.23	2.12	4.37
14'	5.05	4.65	2.56	4.50	3.08	1.65	3.58
30'	1.28	1.01	0.80	1.02	0.82	0.56	0.92

60W



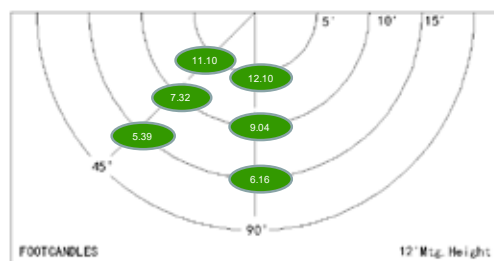
WALL PACK FOOTCANDLES ON THE GROUND							
Wtg. Hgt.	90°			45°			Avg. FCs 450 sq.ft.
	5'	10'	15'	5'	10'	15'	
12'	7.23	6.21	4.90	5.95	4.60	3.00	5.30
14'	5.03	4.65	3.90	4.01	3.60	2.90	4.10
30'	1.43	1.27	0.98	1.40	1.03	0.60	1.12

100W



WALL PACK FOOTCANDLES ON THE GROUND							
Wtg. Hgt.	90°			45°			Avg. FCs 450 sq.ft.
	5'	10'	15'	5'	10'	15'	
12'	10.00	7.67	5.23	9.20	6.80	4.57	7.20
14'	9.02	6.03	4.05	8.29	5.18	3.66	6.03
30'	2.87	2.34	1.75	2.43	1.54	0.94	1.98

120W



WALL PACK FOOTCANDLES ON THE GROUND							
Wtg. Hgt.	90°			45°			Avg. FCs 450 sq.ft.
	5'	10'	15'	5'	10'	15'	
12'	12.10	9.04	6.16	11.10	7.32	5.39	8.52
14'	9.74	7.67	5.23	8.79	6.87	4.57	7.14
30'	3.30	2.80	2.20	2.93	2.28	1.46	2.50