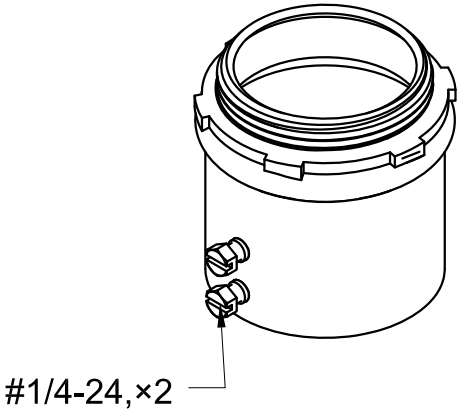
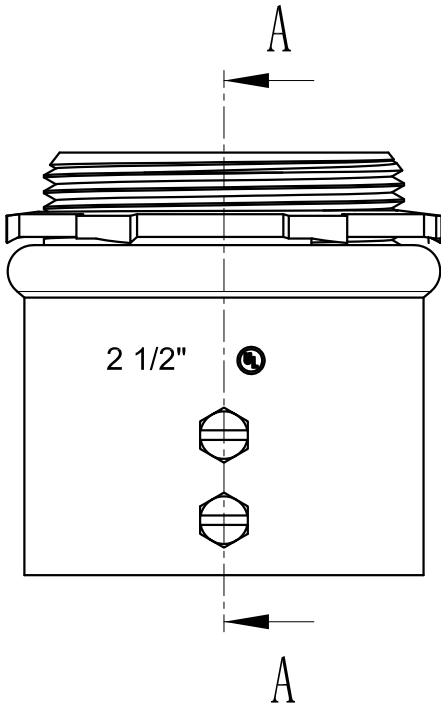
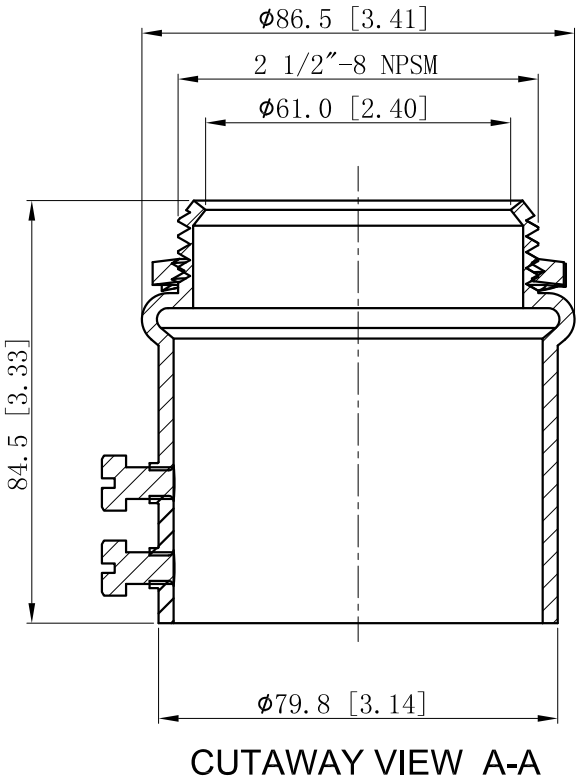


SIDES	BOTTOM
2 pcs #1/4-24×3/8 Screws Installed	
Material:Steel-Welding tuble, zinc plated	



DESCRIPTION
TRADE REFERENCE TERMS

This data sheet is for reference only .GARVIN INDUSTRIES reserves the right to make changes to the design without prior notice.

STANDARD PACKING	GARVIN INDUSTRIES		
10 PCS	TITLE STEEL EMT SET SCREW CONNECTORS		
	SIZE A4	DWG NO. SSCN-250	REV
	DATA SHEET		