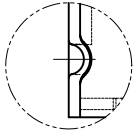
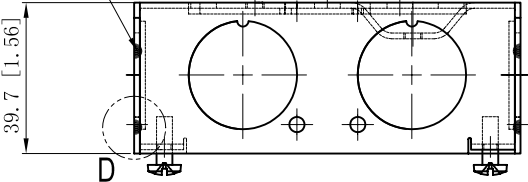


| | |
|--|------------------|
| SIDES | BOTTOM |
| 8 4/3" KNOCKOUTS | 2 1/2" KNOCKOUTS |
| | 2 3/4" KNOCKOUTS |
| | 1 Ground Hump |
| 2 PCS 8-32×1/2 Screws Installed | |
| Material: Steel-0.0625"-G60 Galvanized | |

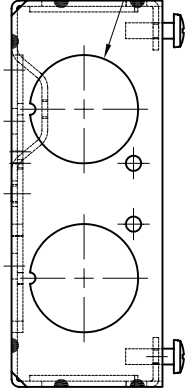


WELDING STYLE DETAIL VIEW D

12 PLACES SPOT WELDING



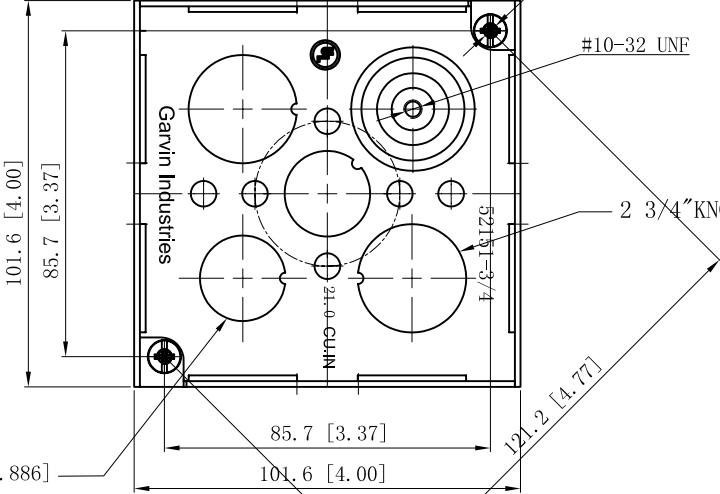
8 3/4" KNOCKOUTS $\phi=28.50$ [$\phi=1.122$]



2-#8-32 UNC

#10-32 UNF

2 3/4" KNOCKOUTS $\phi=28.50$ [$\phi=1.122$]



2 1/2" KNOCKOUTS $\phi=22.50$ [$\phi=0.886$]

This data sheet is for reference only. GARVIN INDUSTRIES reserves the right to make changes to the design without prior notice.

| |
|-----------------------|
| DESCRIPTION |
| |
| TRADE REFERENCE TERMS |
| |

| |
|------------------|
| STANDARD PACKING |
| 50 PCS |

| | |
|--------------------------------------|----------------------|
| GARVIN INDUSTRIES | |
| TITLE 4" SQUARE BOXES 1-1/2" DEEP | |
| SIZE A4 | DWG NO. 52151-3/4 |
| DATA SHEET | |
| REV A | |