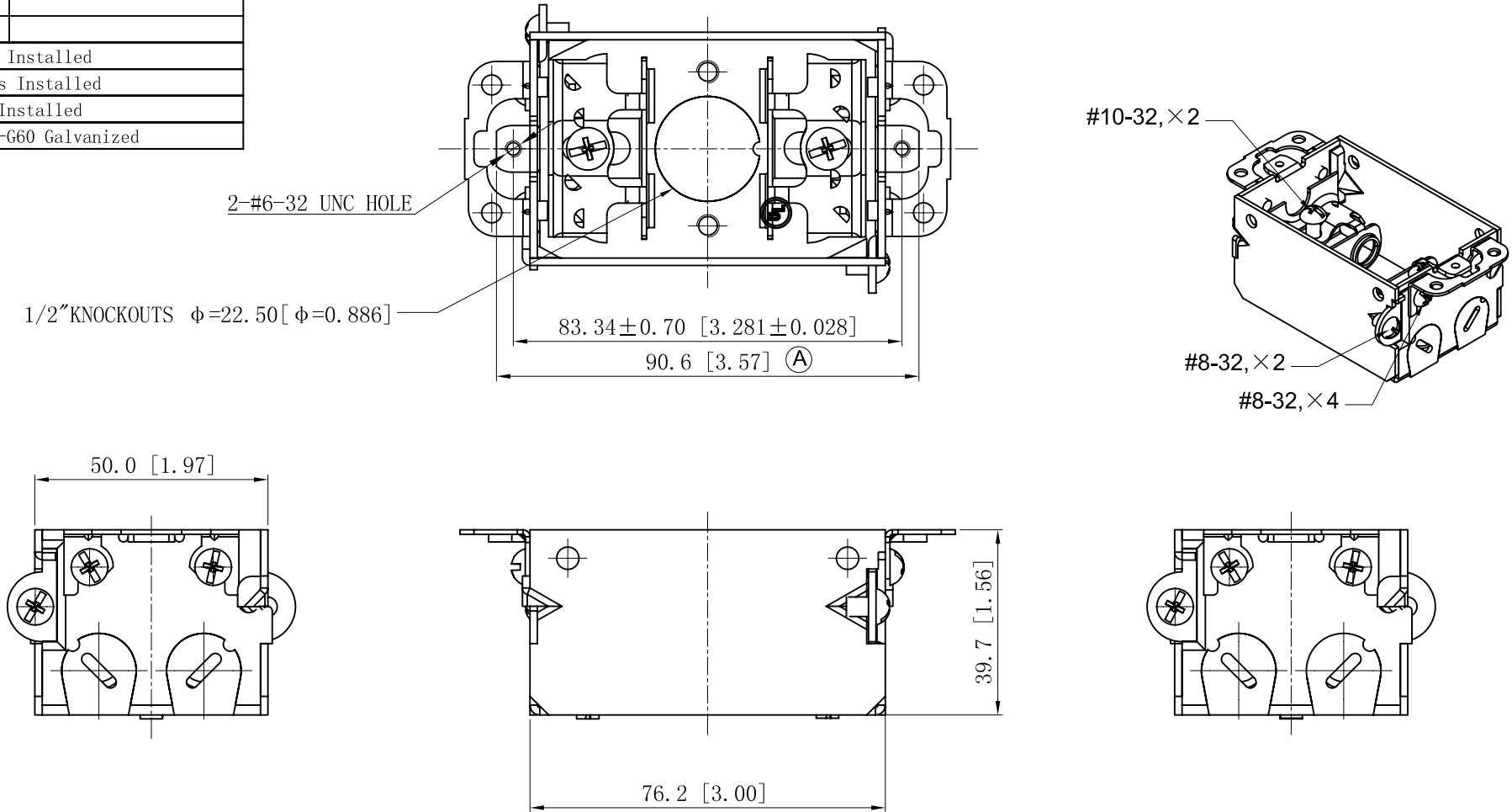


SIDES	BOTTOM
4 KNOCKOUTS	1/2" KNOCKOUTS
2 PCS 8-32×1/4 Screws Installed	
4 PCS 8-32×3/16 Screws Installed	
2 PCS 10-32×1 Screws Installed	
Material:Steel-0.0625"-G60 Galvanized	



DESCRIPTION
TRADE REFERENCE TERMS

This data sheet is for reference only .GARVIN INDUSTRIES reserves the right to make changes to the design without prior notice.

STANDARD PACKING	GARVIN INDUSTRIES		
50 PCS	TITLE		
	GANGABLE SWITCH BOXS BX/MC CABLE CLAMPS		
	SIZE	DWG NO.	REV
	A4	G500-BX	C
DATA SHEET			