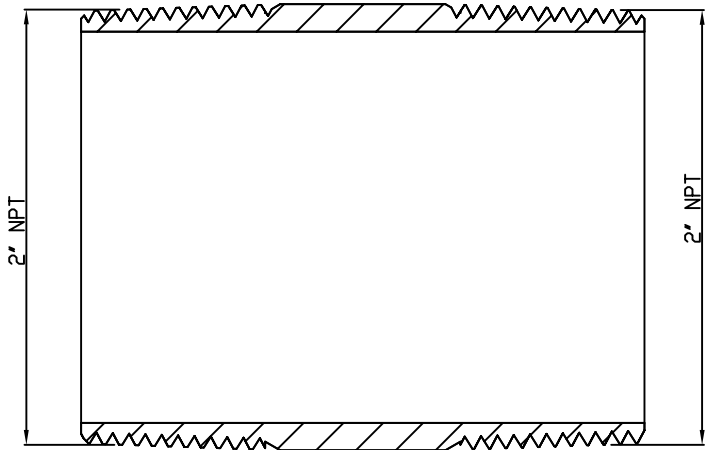
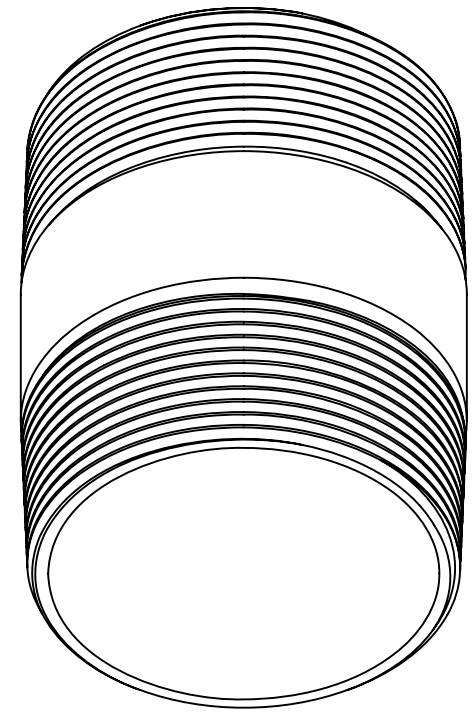
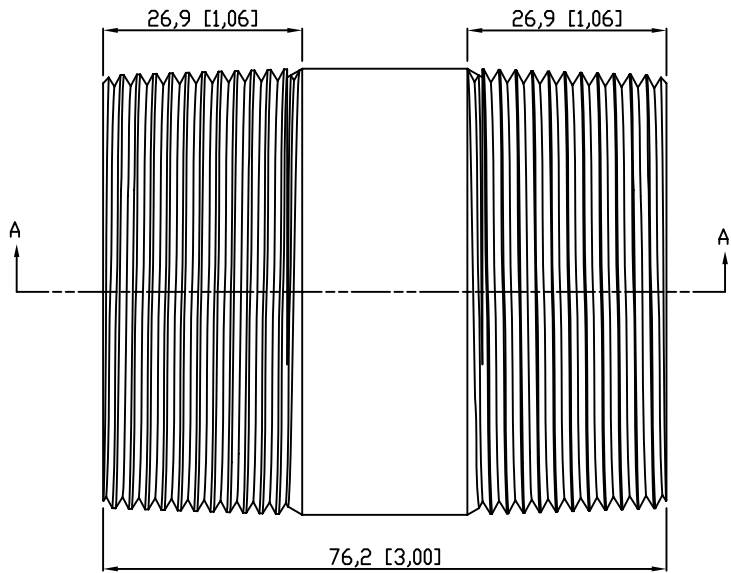


SIDES	BOTTOM
Material:Steel-(C1008-C1018) Galvanized	



VIEW A-A This data sheet is for reference only .GARVIN INDUSTRIES reserves the right to make changes to the design without prior notice.

DESCRIPTION
TRADE REFERENCE TERMS

STANDARD PACKING
5 PCS

<h1 style="text-align: center;">GARVIN INDUSTRIES</h1>		
<h2 style="text-align: center;">RIGID COND NIPPLE</h2>		
TITLE RIGID COND NIPPLE	SIZE A4	DWG NO. DS-RN-200300
		REV A