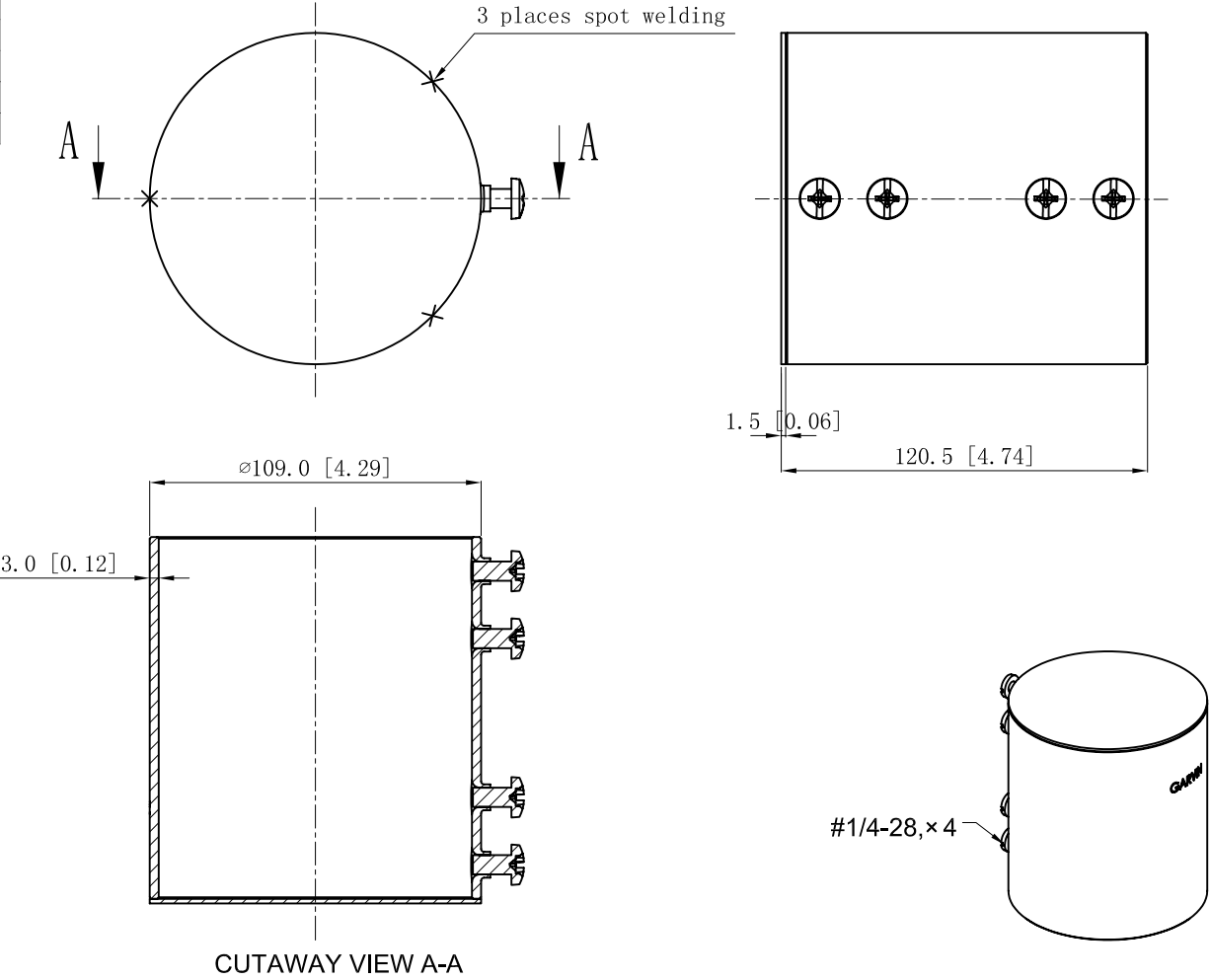


SIDES	BOTTOM
4 PCS #1/4-28×1/2 Screws Installed	
Material:Steel-WELDING TUBE Galvanized	



DESCRIPTION
TRADE REFERENCE TERMS

This data sheet is for reference only .GARVIN INDUSTRIES reserves the right to make changes to the design without prior notice.		
STANDARD PACKING	GARVIN INDUSTRIES	
5 Pcs	TITLE STEEL EMT SETREW COUPLINGS END CAPS TAMPERPROOF	
	SIZE A4	DWG NO. CAPR350
	DATA SHEET	
		REV