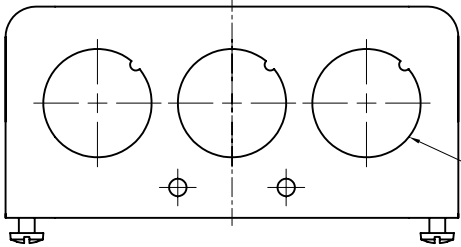
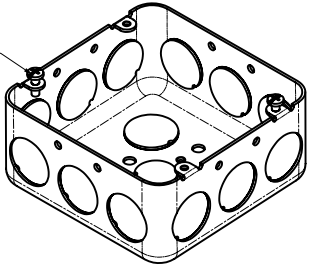


SIDES	BOTTOM
12 3/4" KNOCKOUTS	2 1/2" KNOCKOUTS
	2 3/4" KNOCKOUTS
	1 Ground Hump
2 PCS 8-32x1/2 Screws Installed	
Material: Steel-0.0625"-G60 Galvanized	

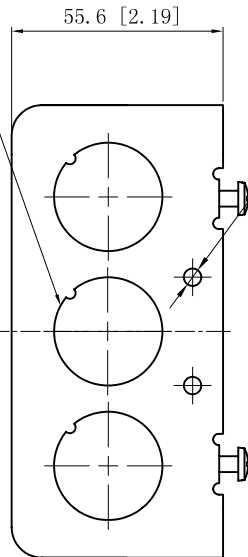


6x3/4" KNOCKOUTS  $\phi=28.50$  [ $\phi=1.122$ ]  
MIRROR

#8-32, x2



6x3/4" KNOCKOUTS  $\phi=28.50$  [ $\phi=1.122$ ]  
MIRROR



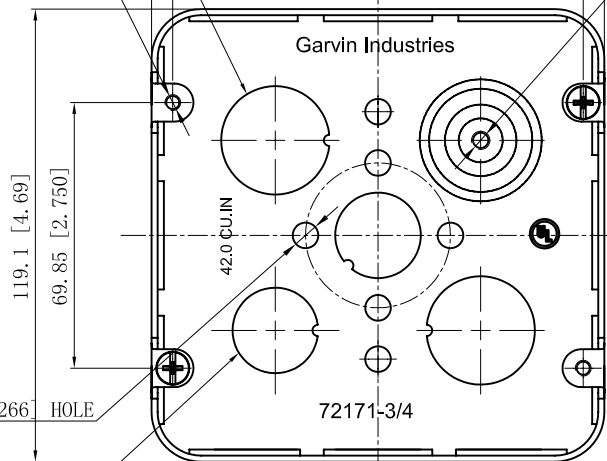
2x3/4" KNOCKOUTS  $\phi=28.5$  [ $\phi=1.12$ ]

119.1 [4.69]  
107.95 [4.250]

4-#8-32 UNC HOLE

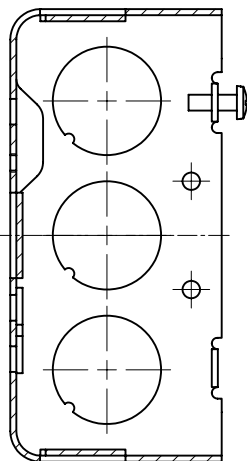
#10-32 UNF HOLE

8- $\phi 4.2$  [ $\phi 0.17$ ] HOLE



6- $\phi 6.75$  [ $\phi 0.266$ ] HOLE

2x1/2" KNOCKOUTS  $\phi=22.50$  [ $\phi=0.886$ ]



CUTAWAY VIEW A-A

DESCRIPTION
TRADE REFERENCE TERMS

This data sheet is for reference only. GARVIN INDUSTRIES reserves the right to make changes to the design without prior notice.

STANDARD PACKING
25 PCS

<b>GARVIN INDUSTRIES</b>			
TITLE 4-11/16" SQUARE "DRAWN" BOXES (2-1/8" DEEP)			
SIZE A4	DWG NO. 72171-3/4	REV A	
DATA SHEET			