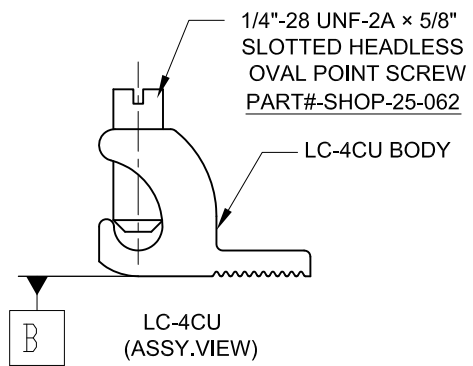
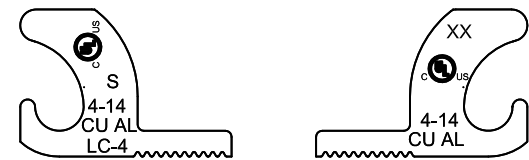
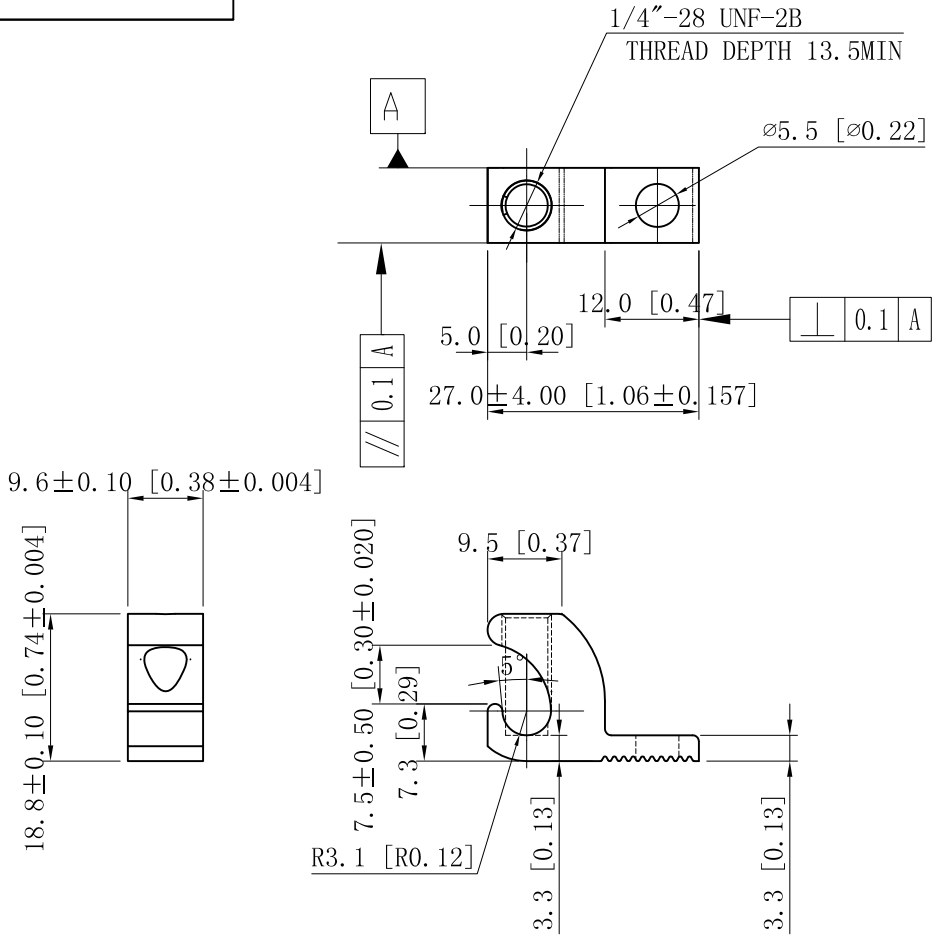


SIDES	BOTTOM
Material: COPPER C110/C101	



DESCRIPTION
TRADE REFERENCE TERMS

STANDARD PACKING

This data sheet is for reference only .GARVIN INDUSTRIES reserves the right to make changes to the design without prior notice.

GARVIN INDUSTRIES		
#4-#14 COPPER LAY-IN LUG		
SIZE A4	DWG NO. 4/14 CL	REV A
DATA SHEET		