

Report of Test

LLIA001617-009

Integrating Sphere Report

Catalog Number: LPT54W-850-E39-G4 High Setting (54W)

Mogul-base retrofit lamp mounted VBU, formed plastic housing, formed aluminum heatsinks, clear plastic enclosures. 238 white LEDs, 8 CLW08E-54WC-14C2B-2835-A0 LED boards with 28 LEDs each and one CLW08E-54WD-14C1B-2835-A1 LED board with 14 LEDs

One internal LED driver



Performance Summary

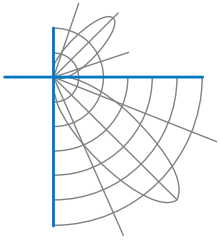
Voltage	120.0 Vac
Current	0.4510 A
Power	53.29 W
Frequency	59.99 Hz
Power Factor	0.985
Current THD	11.9 %
Total Luminous Flux	8435.2 lm
Efficacy	158.3 lm/W
Chromaticity (x,y)	(0.3412, 0.3520)
(u',v')	(0.2086, 0.4843)
Duv	0.0018
CCT	5152 K
CRI (Ra)	82
R9	3
TM-30: Rf	81
TM-30: Rg	96
TM-30: Rcs,h1	-13

Prepared For:

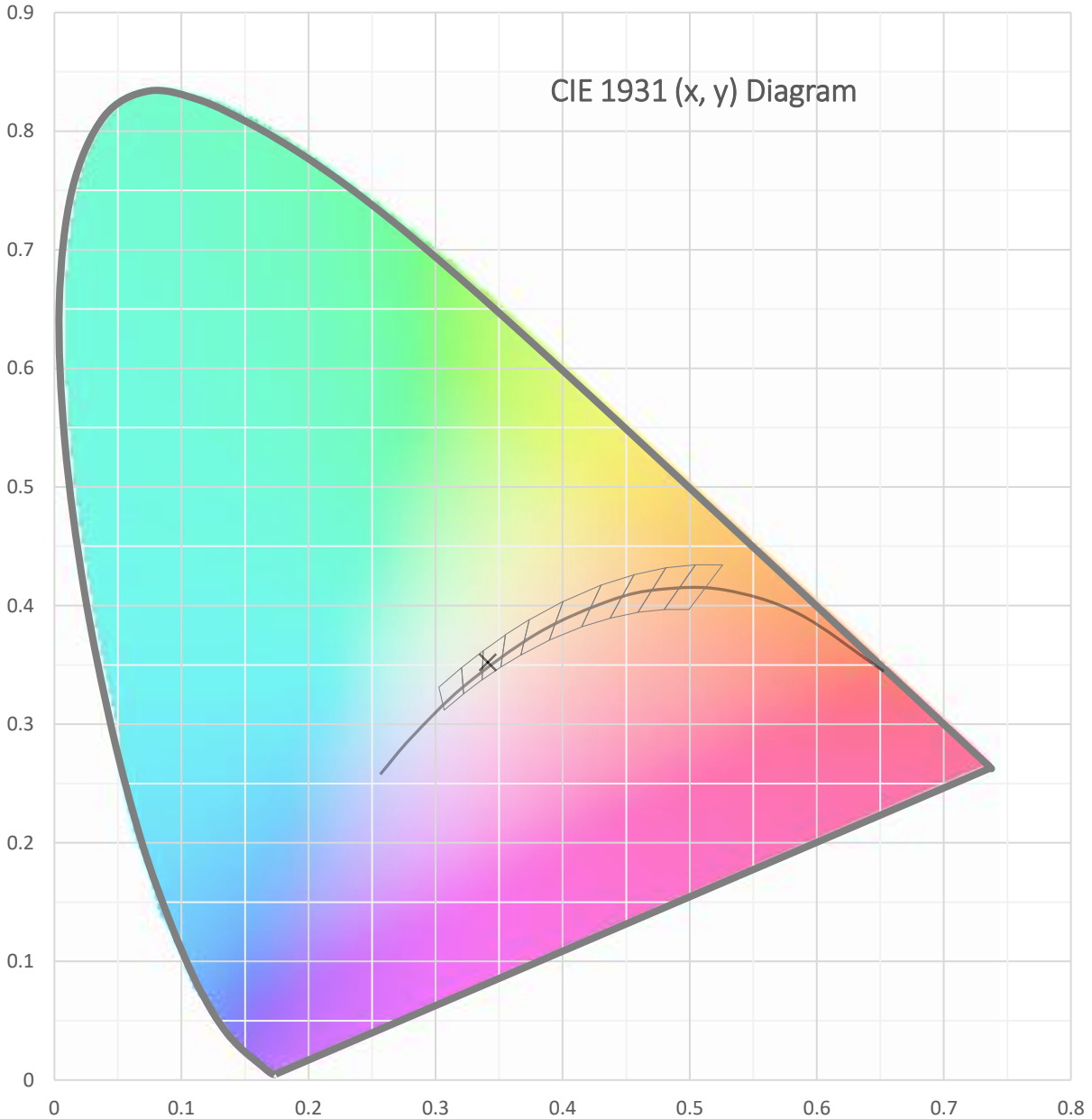
Topaz Lighting Corp
925 Waverly Avenue
Holtsville, NY 11742, USA

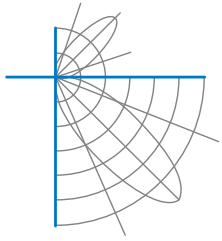
Test date: 12/28/2021
Report date: 12/30/2021

Signed: _____

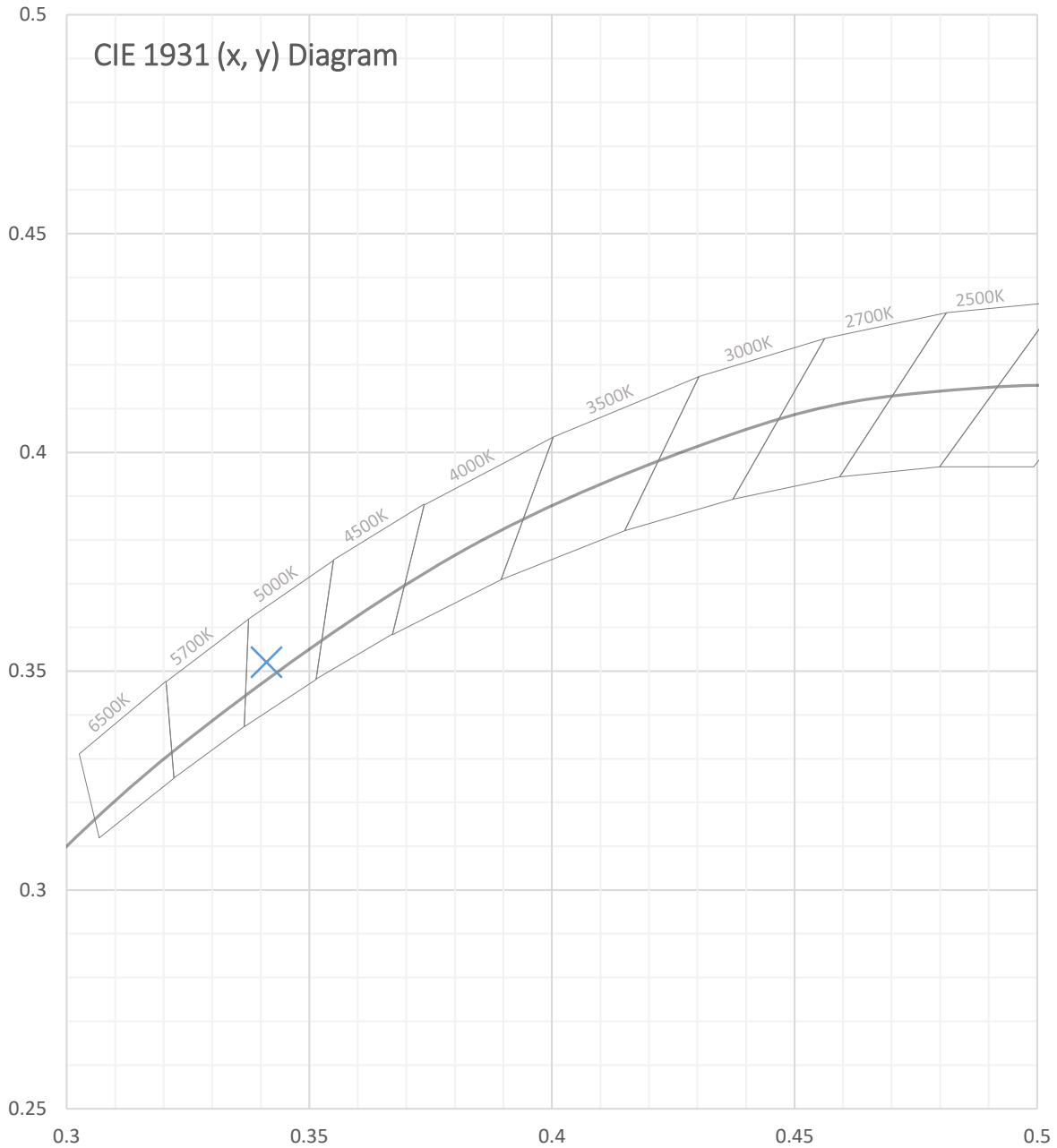


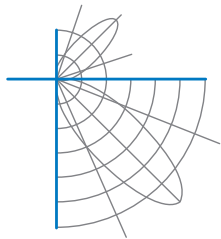
Test Report Number: LLIA001617-009





Test Report Number: LLIA001617-009





Test Report Number: LLIA001617-009

Total Radiant Flux	26.46 W
Total Luminous Flux	8435.2 Lm
Chromaticity CIE 1931 (x, y)	(0.3412, 0.3520)
Chromaticity CIE 1976 (u', v')	(0.2086, 0.4843)
Correlated Color Temperature (CCT)	5152 K
Color Rendering Index (Ra)	82
R1	80
R2	87
R3	91
R4	82
R5	81
R6	81
R7	86
R8	66
R9	3
R10	68
R11	82
R12	62
R13	82
R14	95
TM-30: Rf	81
TM-30: Rg	96
TM-30: Rcs,h1	-13
Distance from Planckian Locus (Duv)	0.0018
Scotopic/Photopic Ratio ‡	1.960

Electrical Data

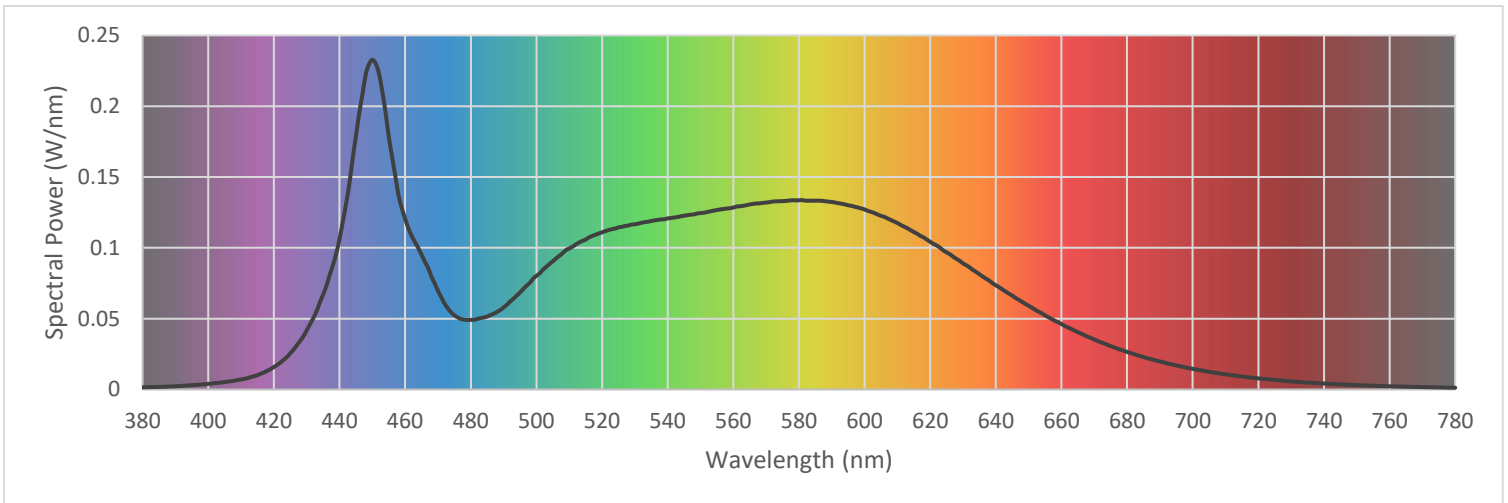
Voltage	120.0 Vac
Current	0.4510 A
Power	53.29 W
Frequency	59.99 Hz
Power Factor	0.985
Current THD	11.9 %

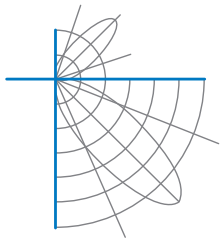


Test Report Number: LLIA001617-009

Summary Spectral Power Distribution (wavelength - nm, spectral power - W/nm)

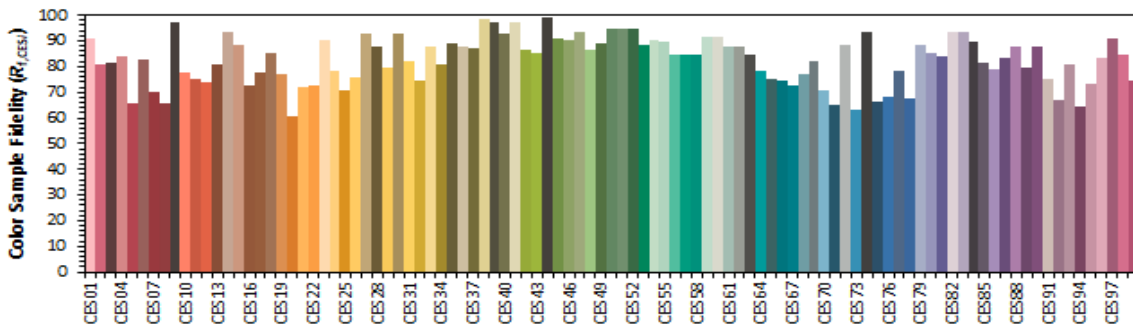
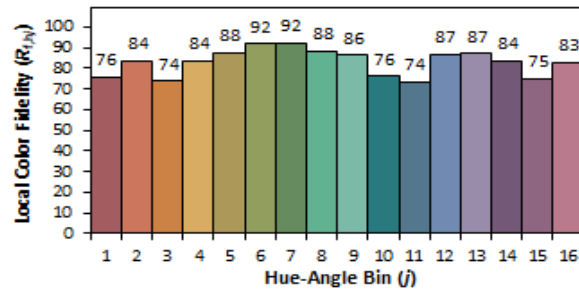
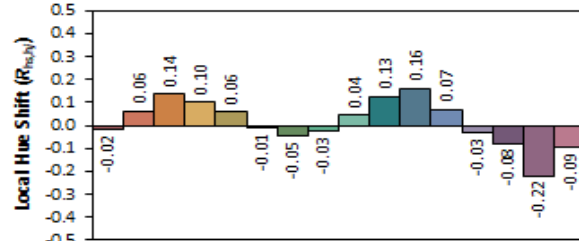
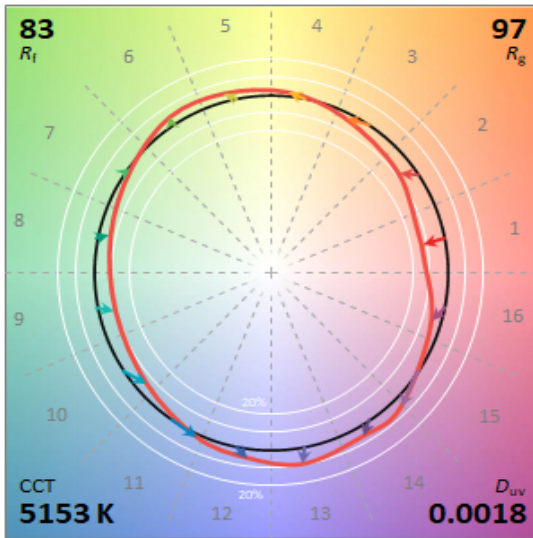
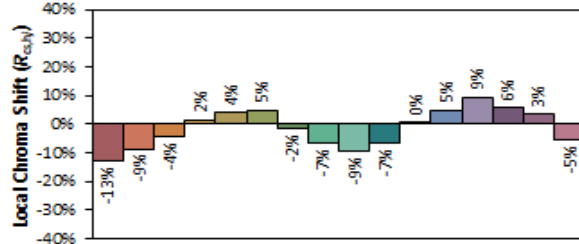
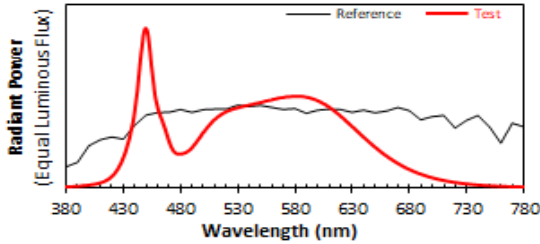
380	0.001574	480	0.049142	580	0.133540	680	0.026517
385	0.001815	485	0.051469	585	0.133310	685	0.022962
390	0.002270	490	0.057934	590	0.132366	690	0.019754
395	0.003036	495	0.068474	595	0.130039	695	0.016941
400	0.003949	500	0.080272	600	0.127053	700	0.014585
405	0.005157	505	0.090543	605	0.122575	705	0.012472
410	0.007062	510	0.099556	610	0.117532	710	0.010685
415	0.010088	515	0.105847	615	0.111174	715	0.009152
420	0.015879	520	0.110946	620	0.104212	720	0.007813
425	0.025630	525	0.114419	625	0.096765	725	0.006690
430	0.041823	530	0.116657	630	0.088979	730	0.005748
435	0.067003	535	0.118939	635	0.081370	735	0.004893
440	0.106329	540	0.120781	640	0.073563	740	0.004184
445	0.179121	545	0.122694	645	0.066288	745	0.003594
450	0.232781	550	0.124533	650	0.059071	750	0.003081
455	0.178513	555	0.126658	655	0.052251	755	0.002640
460	0.120418	560	0.128449	660	0.046220	760	0.002281
465	0.095024	565	0.130628	665	0.040434	765	0.001958
470	0.069615	570	0.131953	670	0.035265	770	0.001683
475	0.052370	575	0.132980	675	0.030622	775	0.001458
						780	0.001262





Test Report Number: LLIA001617-009

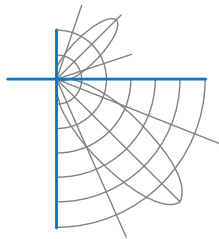
IES TM-30 Details



Notes:

x 0.3412
y 0.3519
u' 0.2086
v' 0.4842

CIE 13.3-1995 (CRI)	
R _a	82
R _s	3



Test Report Number: LLIA001617-009

Test Equipment Configuration: LightLab International Allentown 2m Integrating Sphere
Measurements acquired using a Labsphere CDS 2600 spectroradiometer
Testing was performed using 4π geometry

Test Temperature: 25.4 °C

Test Procedure: Tested in accordance with the applicable sections of:
LM-79-19, LM-78-20, LM-58-20, ANSI_ANSLG C78.377-2017, TM-30-20

Significance: The laboratory has not participated in the selection of samples to be tested.
All testing is performed on the understanding that the significance of the report is limited to the extent that the test sample is representative of production units.

Notes: The measurements and other derived quantities contained in this report are based on the absolute data as measured.

Prorating the performance of the sample for the use of other component combinations (such as lamp / LED / Ballast / driver), or for use in different environmental conditions than that tested, may produce erroneous results.

This report is free of erasures and corrections

This report may contain data that are not covered by the NVLAP accreditation. Quantities marked with ‡ are not covered.

This report must not be used by the customer to claim product certification, approval or endorsement by NVLAP, NIST, or any agency of the Federal Government.