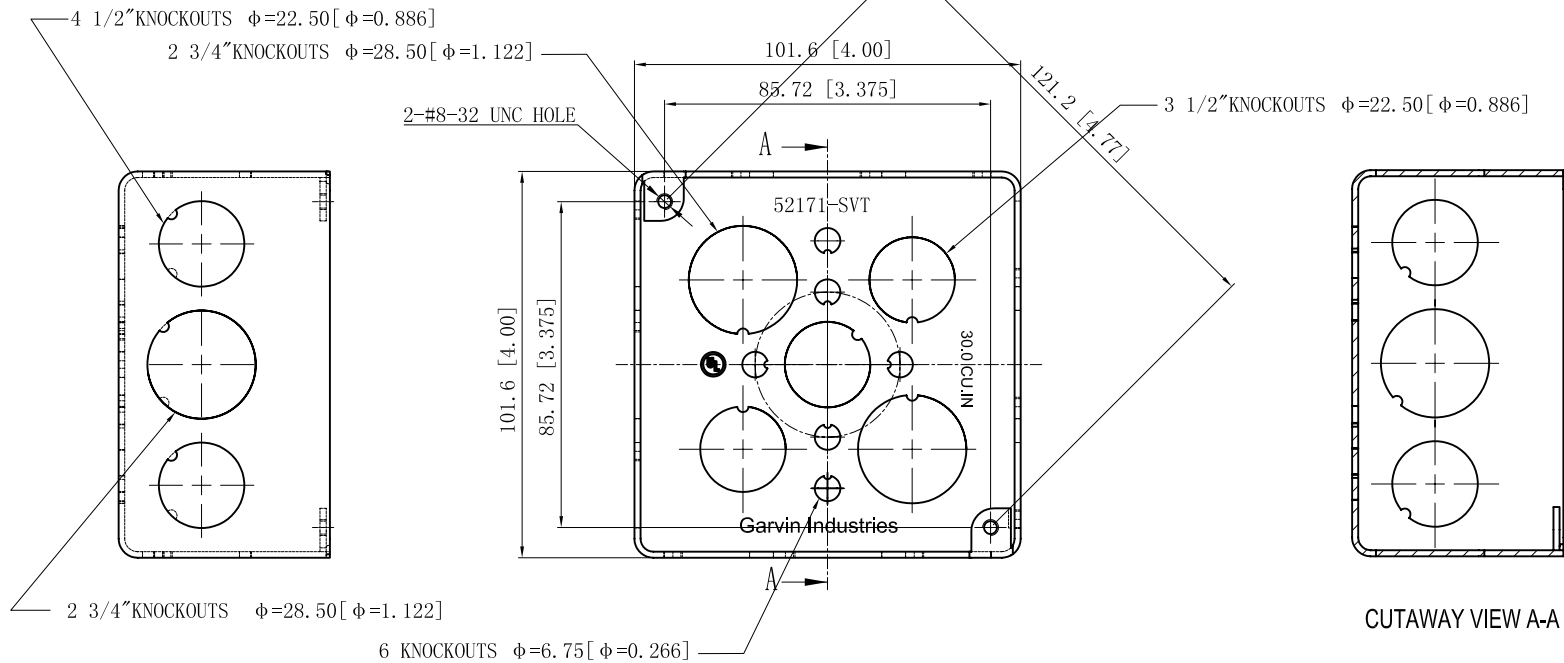
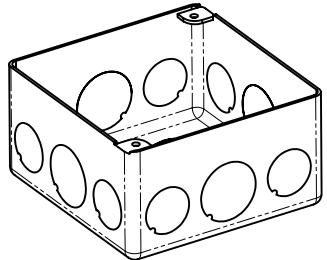
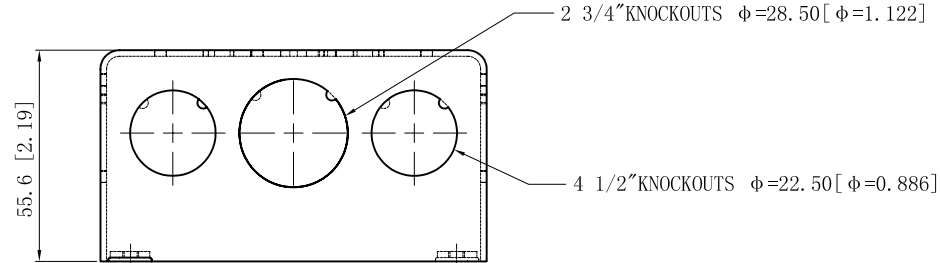


SIDES	BOTTOM
8 1/2" KNOCKOUTS	6 KNOCKOUTS
4 3/4" KNOCKOUTS	3 1/2" KNOCKOUTS
	2 3/4" KNOCKOUTS
Material: Steel-0.0625"-C. R. S, red powder coating	



DESCRIPTION
TRADE REFERENCE TERMS

This data sheet is for reference only. GARVIN INDUSTRIES reserves the right to make changes to the design without prior notice.

STANDARD PACKING	GARVIN INDUSTRIES		
25 PCS	TITLE 4" SQUARE BOXES 2-1/8" DEEP		
	SIZE A4	DWG NO. 52171-SVTRED	REV
	DATA SHEET		