



Report of Test

LLIA001617-014

Integrating Sphere Report

Catalog Number: LPT100W-850-EX39 Medium Setting (80W)

Mogul-base retrofit lamp mounted VBD, formed plastic housing, formed aluminum heatsinks, clear plastic enclosures. 416 white LEDs, 12 CLW08E-100WC-16C2B-2835-A1 LED boards with 32 LEDs each and one CLW08E-100WD-16C2B-2835-A0 LED board with 32 LEDs

One internal LED driver



Performance Summary

Voltage	120.0 Vac
Current	0.6530 A
Power	77.75 W
Frequency	59.99 Hz
Power Factor	0.992
Current THD	8.4 %

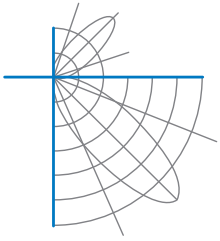
Total Luminous Flux	12581.6 lm
Efficacy	161.8 lm/W
Chromaticity (x,y)	(0.3421, 0.3527)
(u',v')	(0.2090, 0.4848)
Duv	0.0018
CCT	5118 K
CRI (Ra)	82
R9	3
TM-30: Rf	81
TM-30: Rg	96
TM-30: Rcs,h1	-13

Prepared For:

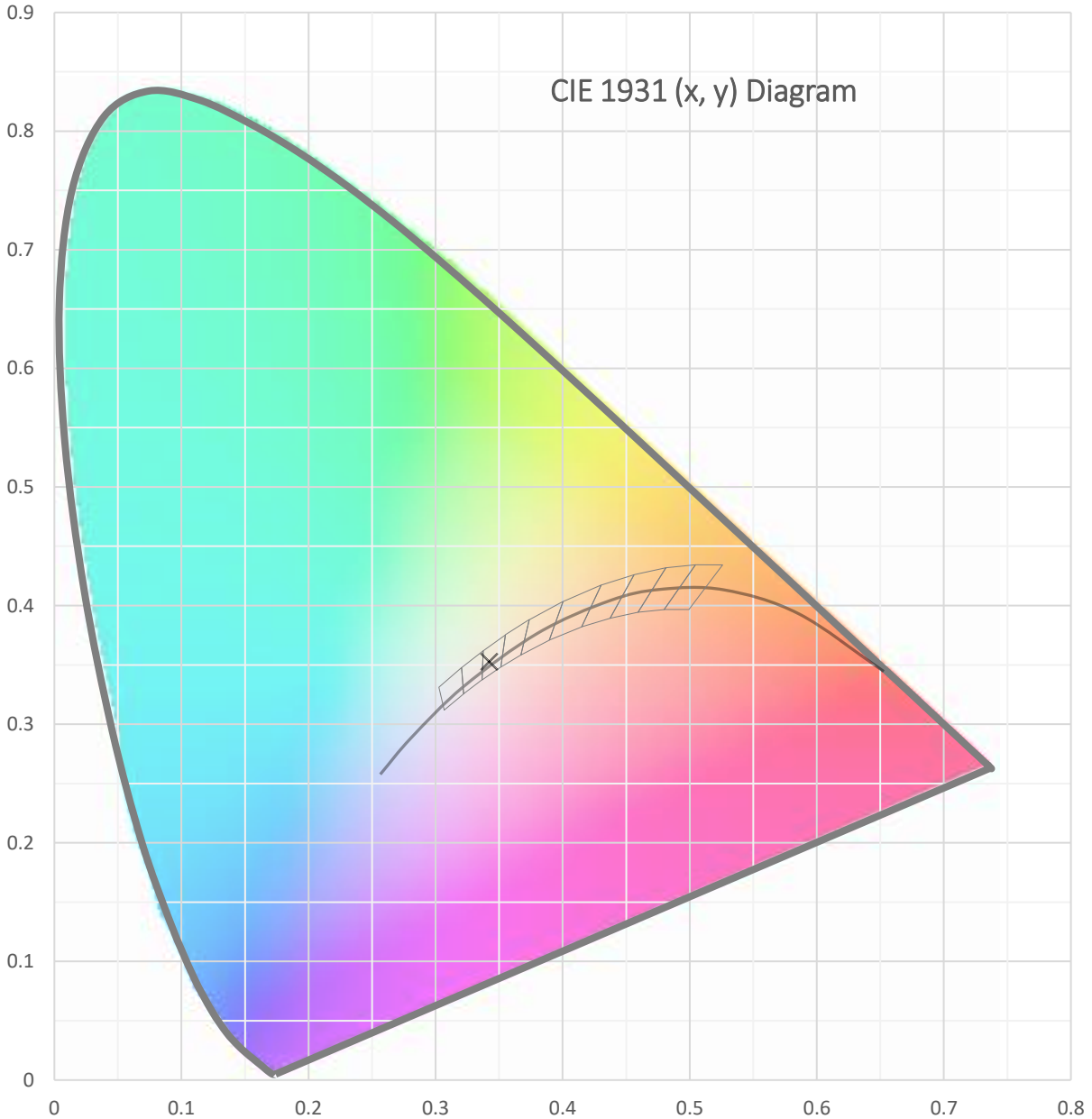
Topaz Lighting Corp
925 Waverly Avenue
Holtsville, NY 11742, USA

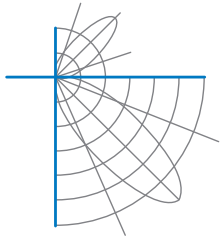
Test date: 12/28/2021
Report date: 12/30/2021

Signed: _____

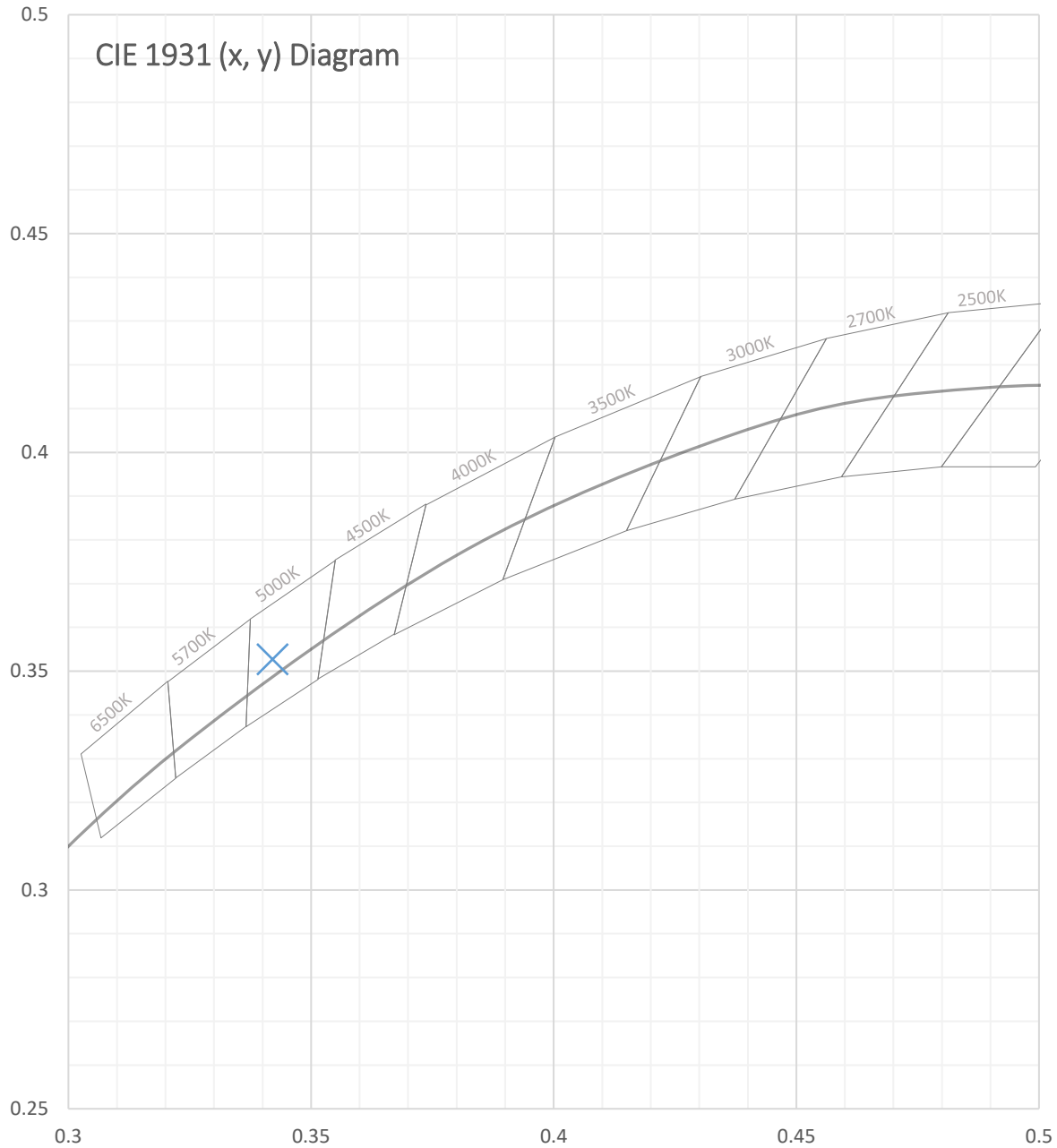


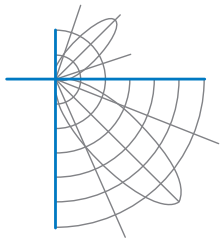
Test Report Number: LLIA001617-014





Test Report Number: LLIA001617-014





Test Report Number: LLIA001617-014

Total Radiant Flux	39.40 W
Total Luminous Flux	12581.6 Lm
Chromaticity CIE 1931 (x, y)	(0.3421, 0.3527)
Chromaticity CIE 1976 (u', v')	(0.2090, 0.4848)
Correlated Color Temperature (CCT)	5118 K
Color Rendering Index (Ra)	82
R1	80
R2	87
R3	91
R4	82
R5	81
R6	81
R7	86
R8	66
R9	3
R10	68
R11	82
R12	61
R13	82
R14	95
TM-30: Rf	81
TM-30: Rg	96
TM-30: Rcs,h1	-13
Distance from Planckian Locus (Duv)	0.0018
Scotopic/Photopic Ratio ‡	1.953

Electrical Data

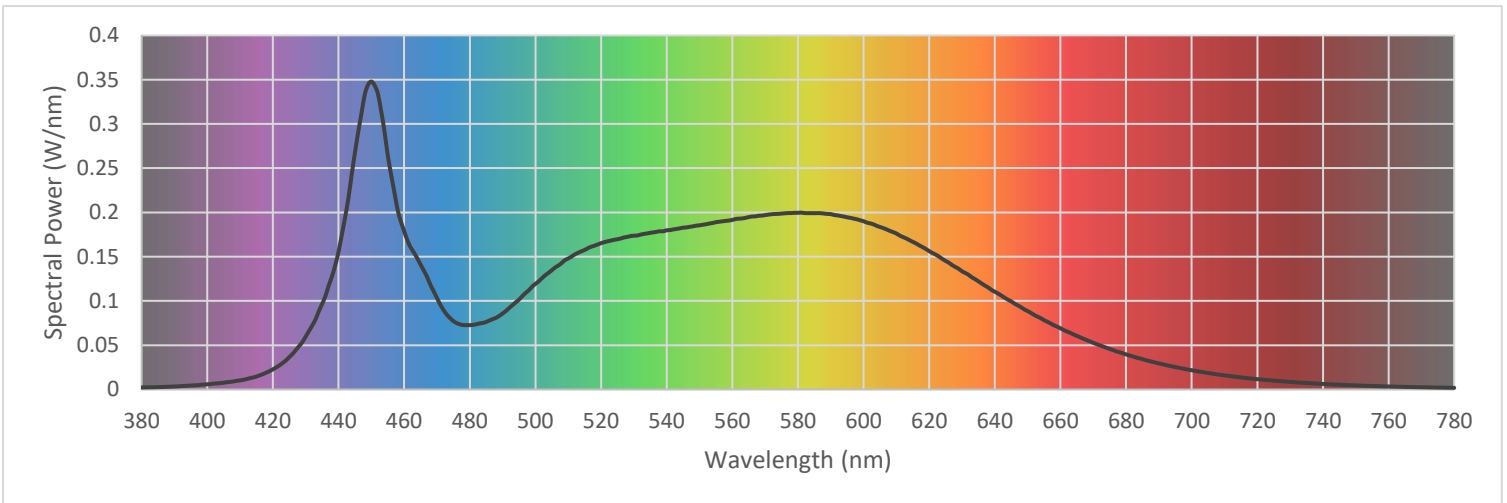
Voltage	120.0 Vac
Current	0.6530 A
Power	77.75 W
Frequency	59.99 Hz
Power Factor	0.992
Current THD	8.4 %



Test Report Number: LLIA001617-014

Summary Spectral Power Distribution (wavelength - nm, spectral power - W/nm)

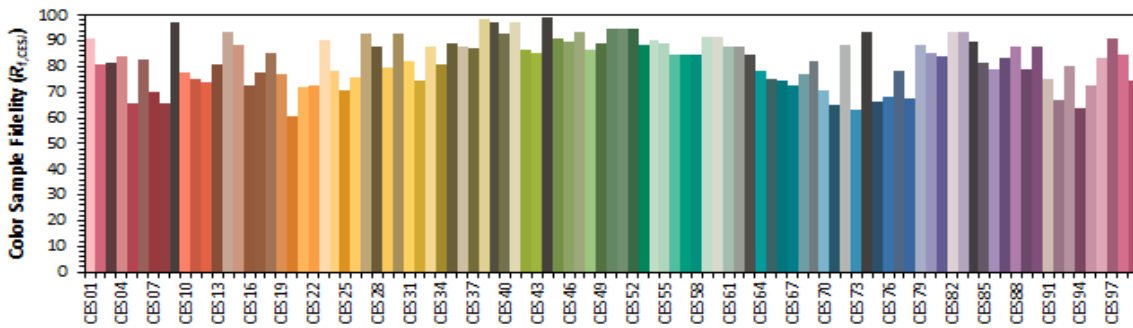
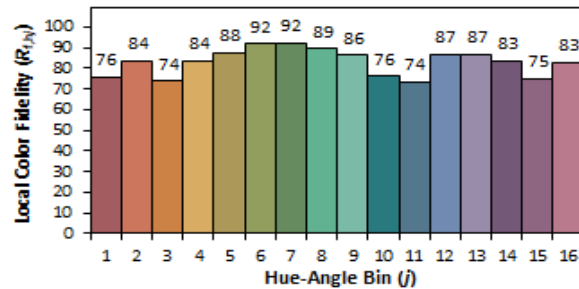
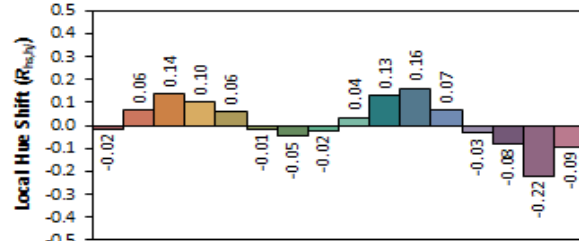
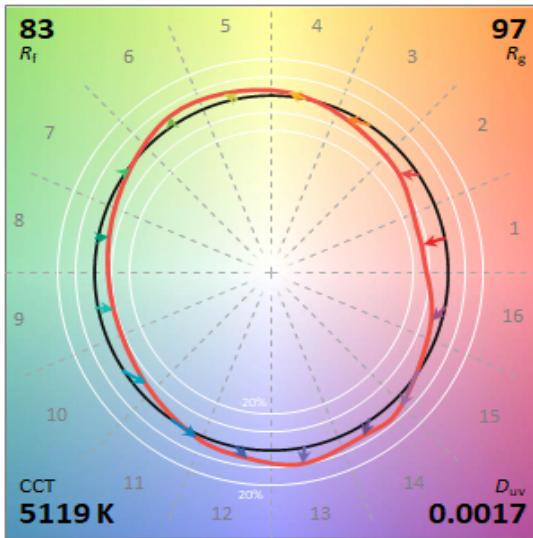
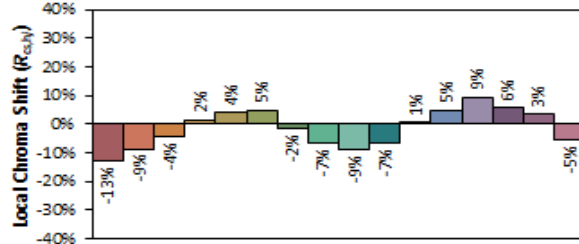
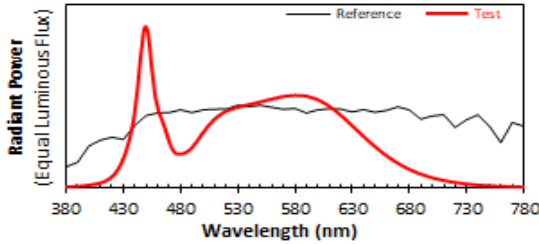
380	0.002299	480	0.072648	580	0.199570	680	0.039609
385	0.002665	485	0.076278	585	0.199132	685	0.034237
390	0.003293	490	0.085809	590	0.198097	690	0.029436
395	0.004471	495	0.101542	595	0.194453	695	0.025293
400	0.005849	500	0.119310	600	0.190056	700	0.021714
405	0.007633	505	0.134747	605	0.183564	705	0.018608
410	0.010275	510	0.147975	610	0.176199	710	0.015911
415	0.014645	515	0.157621	615	0.166719	715	0.013621
420	0.022754	520	0.165265	620	0.156312	720	0.011640
425	0.036609	525	0.169723	625	0.145222	725	0.009957
430	0.059830	530	0.173694	630	0.133503	730	0.008534
435	0.096662	535	0.176924	635	0.122178	735	0.007279
440	0.155685	540	0.179852	640	0.110429	740	0.006214
445	0.267728	545	0.182748	645	0.099483	745	0.005337
450	0.347819	550	0.185422	650	0.088566	750	0.004577
455	0.264508	555	0.188981	655	0.078259	755	0.003926
460	0.178753	560	0.191518	660	0.069148	760	0.003384
465	0.141062	565	0.194737	665	0.060469	765	0.002901
470	0.103204	570	0.196992	670	0.052671	770	0.002501
475	0.077236	575	0.198681	675	0.045769	775	0.002161
						780	0.001868





Test Report Number: LLIA001617-014

IES TM-30 Details



Notes:

x 0.3421
y 0.3526
u' 0.2090
v' 0.4847

CIE 13.3-1995
(CRI)
 R_a 82
 R_s 3



Test Report Number: LLIA001617-014

Test Equipment Configuration: LightLab International Allentown 2m Integrating Sphere
Measurements acquired using a Labsphere CDS 2600 spectroradiometer
Testing was performed using 4 π geometry

Test Temperature: 25.3 °C

Test Procedure: Tested in accordance with the applicable sections of:
LM-79-19, LM-78-20, LM-58-20, ANSI_ANSI C78.377-2017, TM-30-20

Significance: The laboratory has not participated in the selection of samples to be tested.
All testing is performed on the understanding that the significance of the report is limited to the extent that the test sample is representative of production units.

Notes: The measurements and other derived quantities contained in this report are based on the absolute data as measured.

Prorating the performance of the sample for the use of other component combinations (such as lamp / LED / Ballast / driver), or for use in different environmental conditions than that tested, may produce erroneous results.

This report is free of erasures and corrections

This report may contain data that are not covered by the NVLAP accreditation. Quantities marked with ‡ are not covered.

This report must not be used by the customer to claim product certification, approval or endorsement by NVLAP, NIST, or any agency of the Federal Government.