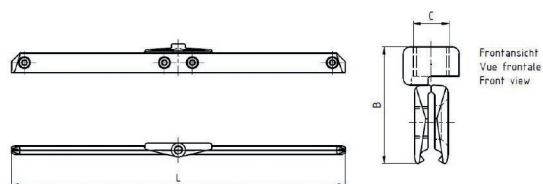
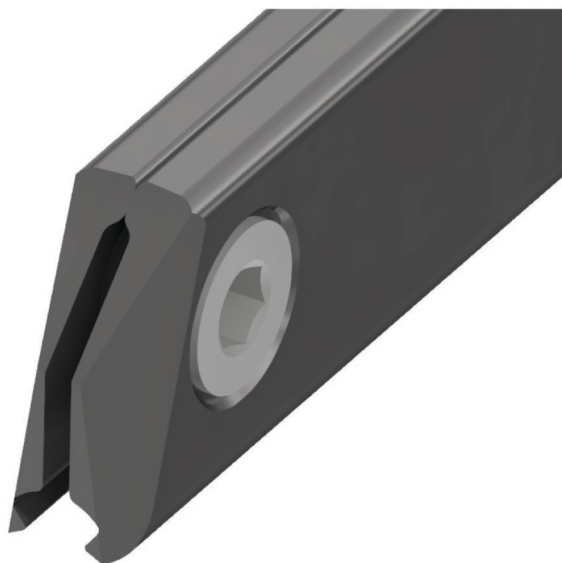


Curve rail type 0, for deviation angle 3°- 5°, with thread M16, for grooved contact wire 100-120 mm²

Item number B0412-05



Dimensions

C: M16
B: 52 mm
L: 600 mm

Material and weight

Weight: 2.000 kg
Material: STL HDG

Comments

- The indication of the angles apply for grooved contact wires up to 107 mm²



Southwire[™]



A COLAS RAIL COMPANY

Contact Us: Transit@southwire.com