

Report of Test

LLIA001646-005

Integrating Sphere Report

Catalog Number: LWP-30WPCTS-EX39-G 20W, 5000K

Mogul-base retrofit lamp mounted horizontal and aimed down, formed plastic housing, formed aluminum heatsink, three clear plastic enclosures.

192 white LEDs; 96 CW, 96 WW on three circuit boards with 64 LEDs each

Internal LED driver



Performance Summary

Voltage	120.0 Vac
Current	0.1649 A
Power	19.54 W
Frequency	59.99 Hz
Power Factor	0.988
Current THD	8.5 %
Total Luminous Flux	3175.6 lm
Efficacy	162.5 lm/W
Chromaticity (x,y)	(0.3413, 0.3528)
(u',v')	(0.2084, 0.4847)
Duv	0.0022
CCT	5152 K
CRI (Ra)	85
R9	16
TM-30: Rf	82
TM-30: Rg	94
TM-30: Rcs,h1	-12

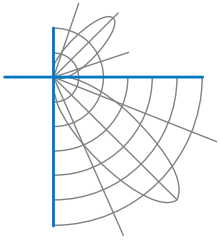
Prepared For:

Topaz Lighting Corp
925 Waverly Avenue
Holtsville, NY 11742, USA

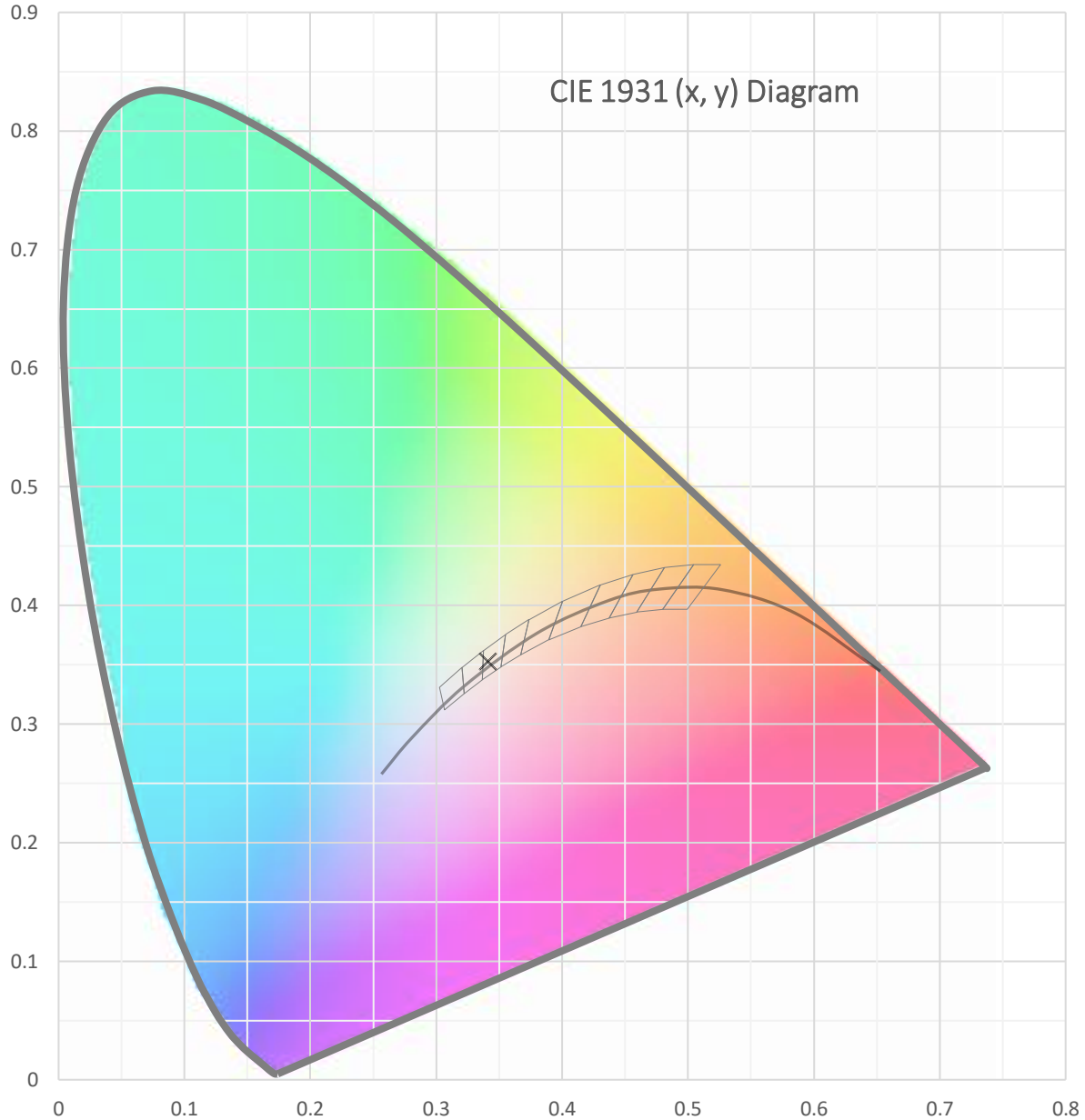
Test date: 01/28/2022

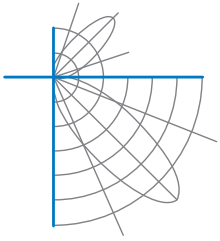
Report date: 02/01/2022

Signed: _____

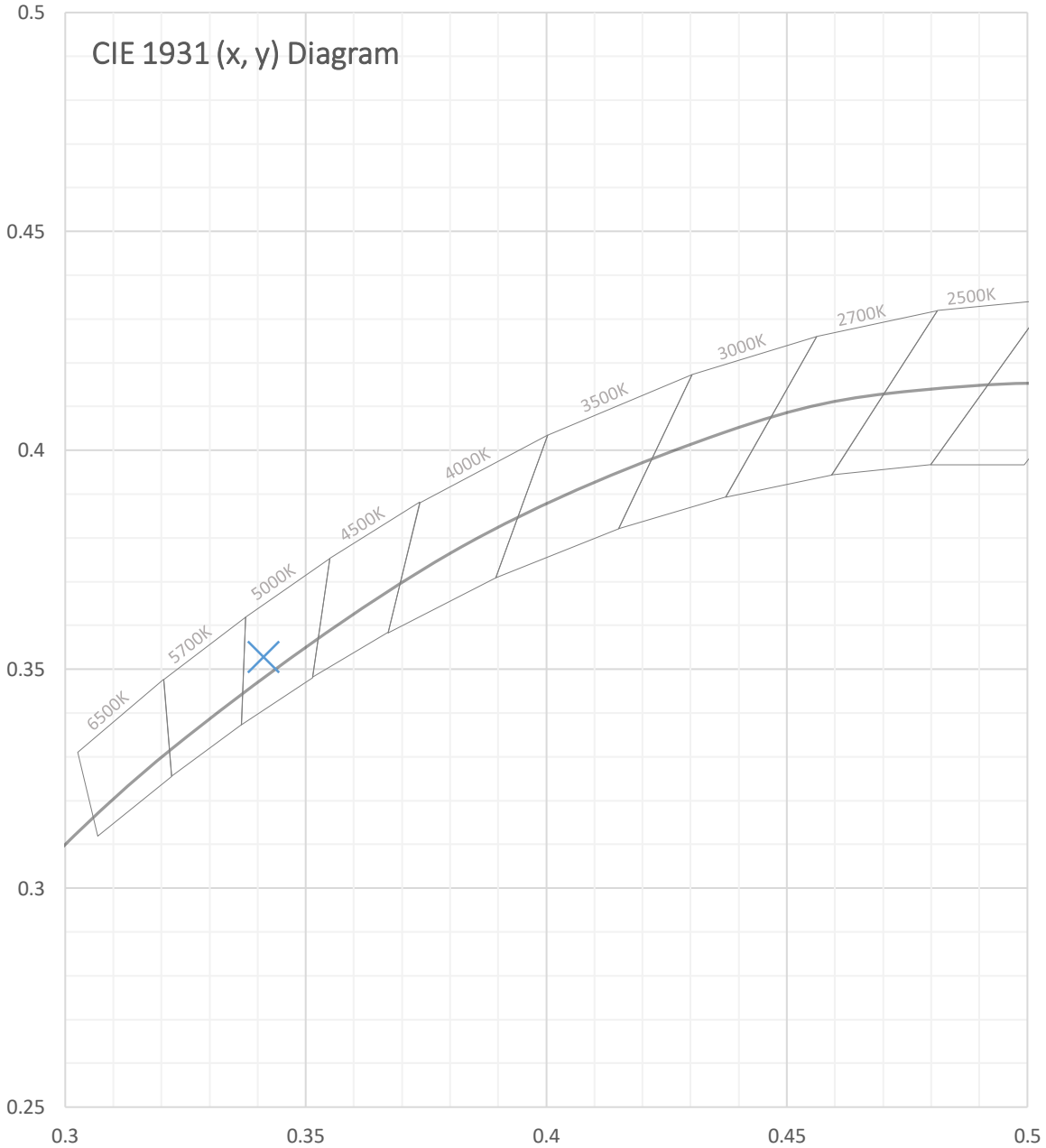


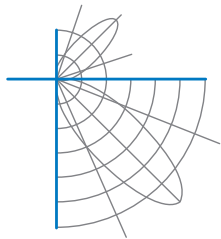
Test Report Number: LLIA001646-005





Test Report Number: LLIA001646-005





Test Report Number: LLIA001646-005

Total Radiant Flux	10.12 W
Total Luminous Flux	3175.6 Lm
Chromaticity CIE 1931 (x, y)	(0.3413, 0.3528)
Chromaticity CIE 1976 (u', v')	(0.2084, 0.4847)
Correlated Color Temperature (CCT)	5152 K
Color Rendering Index (Ra)	85
R1	83
R2	91
R3	95
R4	83
R5	83
R6	86
R7	87
R8	69
R9	16
R10	78
R11	82
R12	62
R13	86
R14	97
TM-30: Rf	82
TM-30: Rg	94
TM-30: Rcs,h1	-12
Distance from Planckian Locus (Duv)	0.0022
Scotopic/Photopic Ratio ‡	2.031

Electrical Data

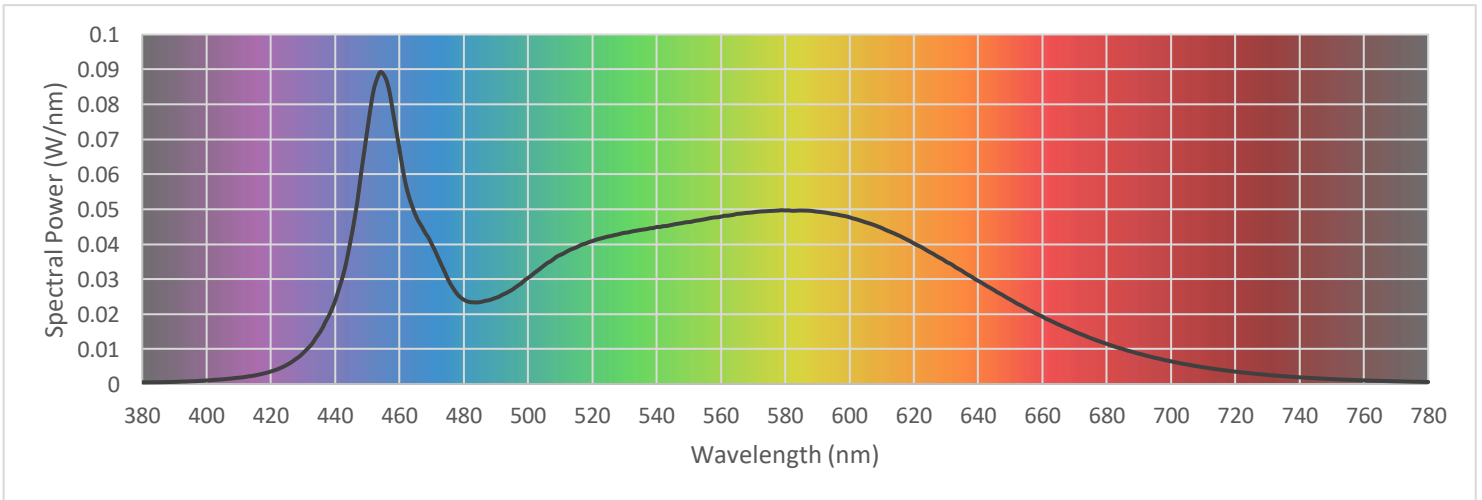
Voltage	120.0 Vac
Current	0.1649 A
Power	19.54 W
Frequency	59.99 Hz
Power Factor	0.988
Current THD	8.5 %

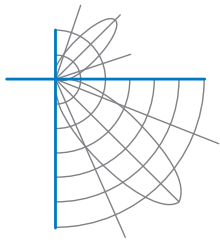


Test Report Number: LLIA001646-005

Summary Spectral Power Distribution (wavelength - nm, spectral power - W/nm)

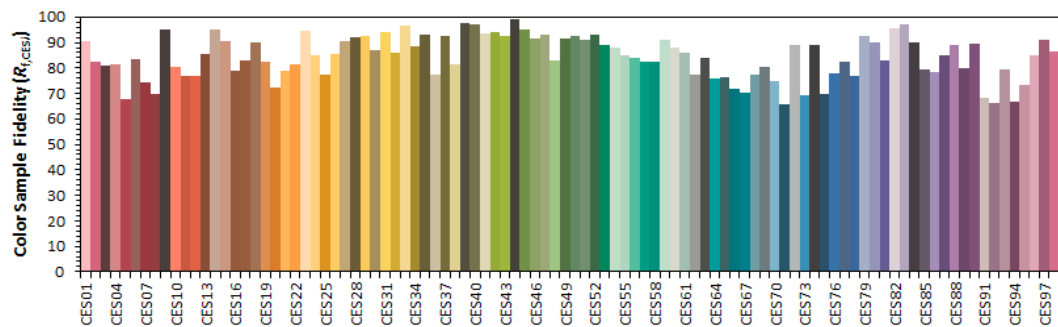
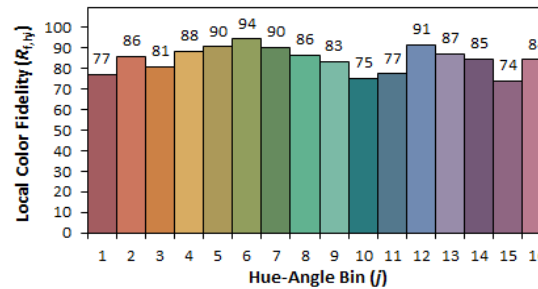
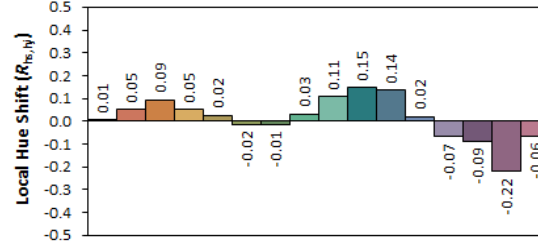
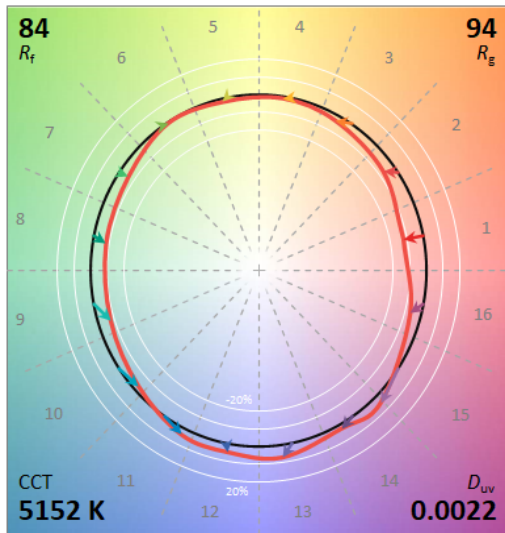
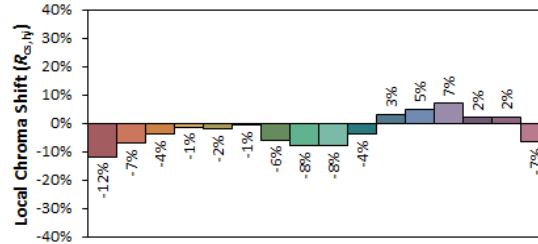
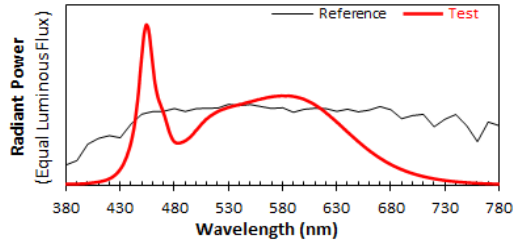
380	0.000464	480	0.024126	580	0.049636	680	0.011470
385	0.000503	485	0.023412	585	0.049632	685	0.010011
390	0.000593	490	0.024655	590	0.049289	690	0.008665
395	0.000761	495	0.026917	595	0.048628	695	0.007481
400	0.001003	500	0.030345	600	0.047695	700	0.006487
405	0.001339	505	0.033900	605	0.046257	705	0.005577
410	0.001799	510	0.036910	610	0.044640	710	0.004798
415	0.002447	515	0.039074	615	0.042599	715	0.004127
420	0.003576	520	0.040883	620	0.040233	720	0.003532
425	0.005487	525	0.042208	625	0.037718	725	0.003041
430	0.008826	530	0.043256	630	0.035019	730	0.002608
435	0.014455	535	0.044063	635	0.032349	735	0.002227
440	0.023785	540	0.044923	640	0.029521	740	0.001906
445	0.041969	545	0.045569	645	0.026838	745	0.001638
450	0.072588	550	0.046324	650	0.024169	750	0.001398
455	0.088631	555	0.047134	655	0.021607	755	0.001201
460	0.067175	560	0.047861	660	0.019283	760	0.001035
465	0.048325	565	0.048653	665	0.017028	765	0.000887
470	0.040083	570	0.049124	670	0.014998	770	0.000763
475	0.030154	575	0.049497	675	0.013129	775	0.000657
						780	0.000568



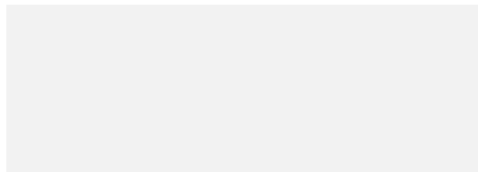


Test Report Number: LLIA001646-005

IES TM-30 Details



Notes:



x **0.3412**
y **0.3527**
u' **0.2084**
v' **0.4847**

CIE 13.3-1995
(CRI)
R_a 85
R_g 16



Test Report Number: LLIA001646-005

Test Equipment Configuration: LightLab International Allentown 2m Integrating Sphere
Measurements acquired using a Labsphere CDS 2600 spectroradiometer
Testing was performed using 4π geometry

Test Temperature: 25.1 °C

Test Procedure: Tested in accordance with the applicable sections of:
LM-79-19, LM-78-20, LM-58-20, ANSI_ANSLG C78.377-2017, TM-30-20

Significance: The laboratory has not participated in the selection of samples to be tested.
All testing is performed on the understanding that the significance of the report is limited to the extent that the test sample is representative of production units.

Notes: The measurements and other derived quantities contained in this report are based on the absolute data as measured.

Prorating the performance of the sample for the use of other component combinations (such as lamp / LED / Ballast / driver), or for use in different environmental conditions than that tested, may produce erroneous results.

This report is free of erasures and corrections

This report may contain data that are not covered by the NVLAP accreditation. Quantities marked with ‡ are not covered.

This report must not be used by the customer to claim product certification, approval or endorsement by NVLAP, NIST, or any agency of the Federal Government.