



Southwire™

ROMEX® BRAND SMARTBOX™ LOW VOLTAGE BOX

PVC

FEATURES

- Leveling tab for easy alignment to adjacent box
- Heavy 42 lb. mounting screws included
- Horizontal or vertical mount
- 6-32 threaded device mounting holes

APPLICATIONS

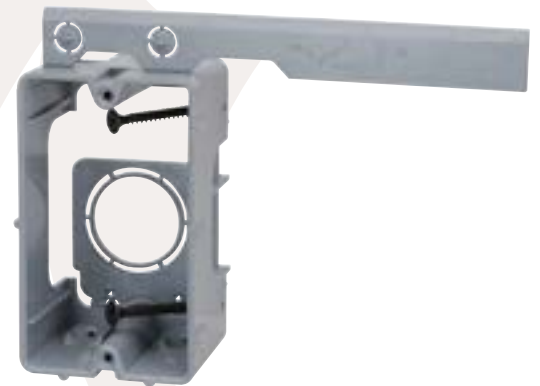
- Use to run low voltage cable to where TV and computer locations are suited

STANDARD MATERIAL

- PVC

CERTIFICATIONS

- RoHS Compliant



MSBLV1G



MSBLV2G

PART #	DESCRIPTION	CUBIC INCHES (CM ³)	MASTER QTY.
MSBLV1G	1 GANG	10.75 (176.16)	16
MSBLV2G	2 GANG	20.84 (341.51)	50

Rev. 1, 3/24

**BUILT FOR DURABILITY.
BUILT FOR RELIABILITY.
BUILT FOR WORK.™**

1-855-798-6657 | SOUTHWIRE.COM

©2024 Southwire Company, LLC. All rights reserved.
*Registered Trademark & ™Trademark of Southwire Company, LLC.