



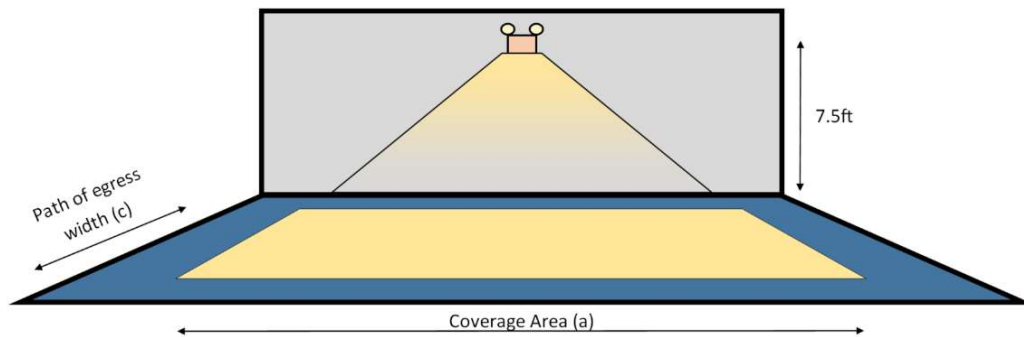
Summary of Test Results

LLIA001218-007

Catalog Number: ESC/LED/RW-NYC

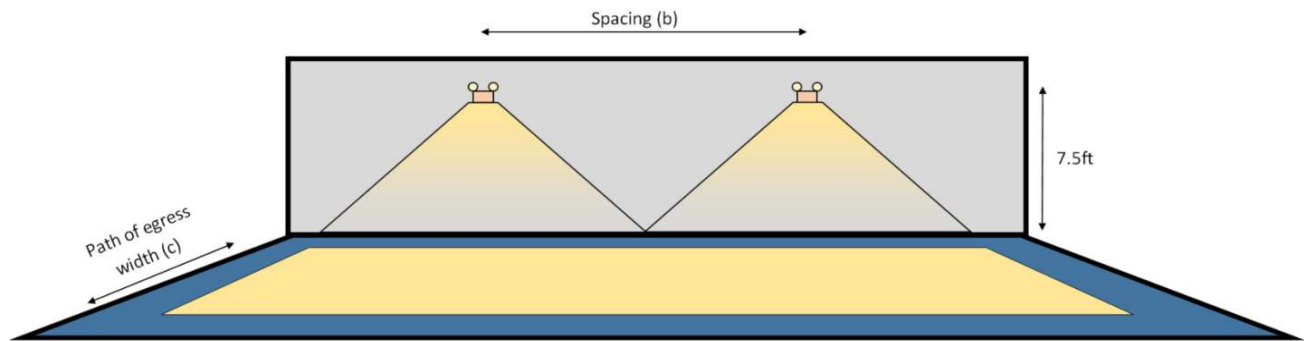
Calculations based on photometric test results from
LightLab International Allentown, Inc. Test Report #LLIA001218-002

Single Luminaire Coverage Area:



Path of Egress (c)	Hor Angle Btwn Heads	Vert Angle from Nadir	Coverage Area (a)	Path of Egress (c)	Hor Angle Btwn Heads	Vert Angle from Nadir	Coverage Area (a)
3' path	80	52.5/40Mid	30'	6' path	70	50/40Mid	26'

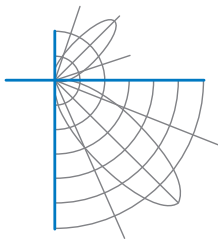
Multiple Luminaire Max Spacing:



Path of Egress (c)	Hor Angle Btwn Heads	Vert Angle from Nadir	Max Spacing (b)	Path of Egress (c)	Hor Angle Btwn Heads	Vert Angle from Nadir	Max Spacing (b)
3' path	80	52.5/40Mid	32'	6' path	70	50/40Mid	30'

Application Notes: Calculations based on initial conditions, a 100-foot long corridor, 8-foot wide and 9-foot high, with 80/50/20 reflectances. Measurements at floor height. Illumination requirements were: average illuminance of no less than 1 fc, minimum illuminance of no less than 0.1 fc, and max/min ratio of no greater than 40:1.

Approved By _____



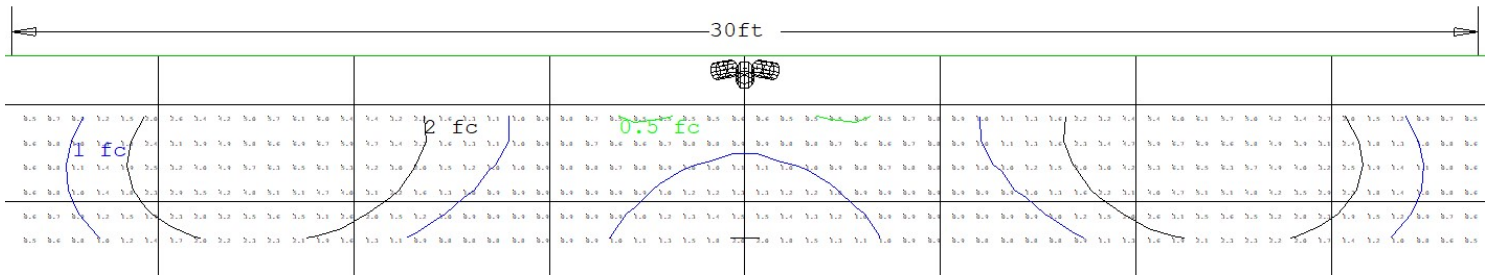
Summary of Test Results

LLIA001218-007

Catalog Number: ESC/LED/RW-NYC

Calculations based on photometric test results from

LightLab International Allentown, Inc. Test Report #LLIA001218-002

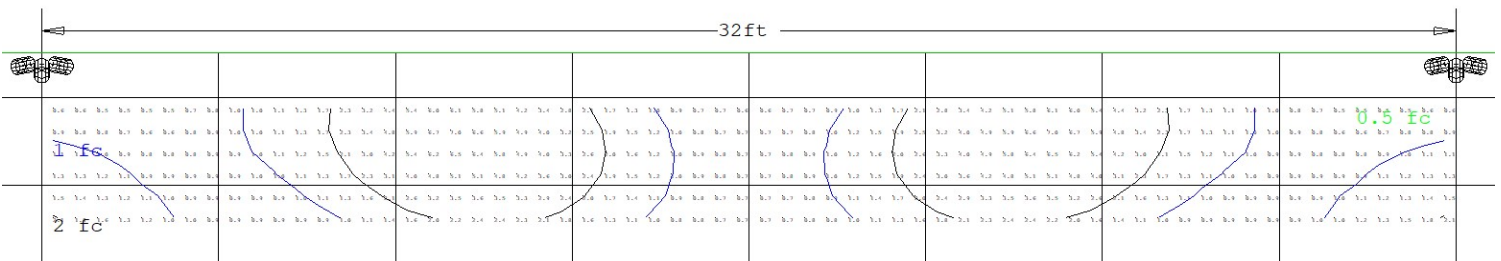


CalcPts_1

Illuminance (Fc)

Average=2.02 Maximum=6.9 Minimum=0.5 Avg/Min=4.04

Max/Min=13.80

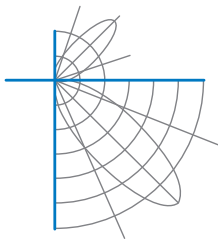


CalcPts_1

Illuminance (Fc)

Average=2.00 Maximum=7.0 Minimum=0.5 Avg/Min=4.00

Max/Min=14.00

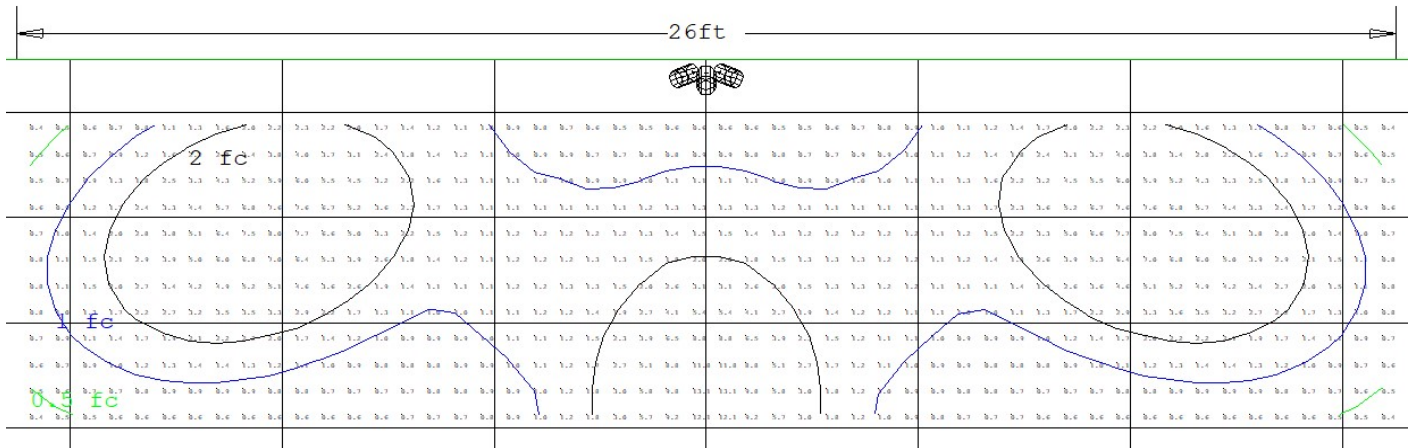


Summary of Test Results

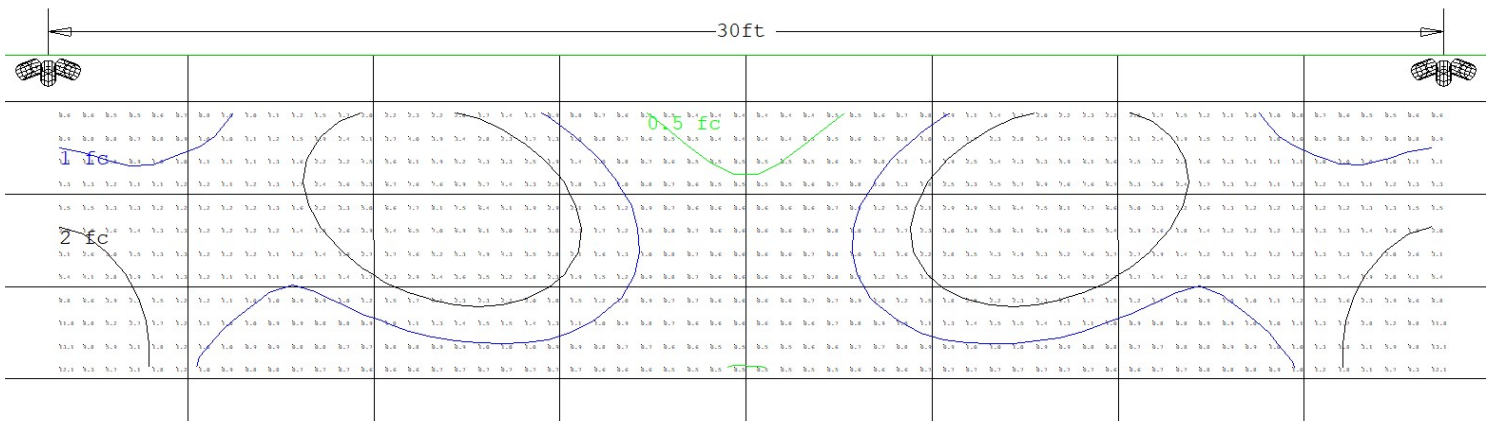
LLIA001218-007

Catalog Number: ESC/LED/RW-NYC

Calculations based on photometric test results from
LightLab International Allentown, Inc. Test Report #LLIA001218-002



CalcPts_1
Illuminance (Fc)
Average=2.15 Maximum=13.1 Minimum=0.4 Avg/Min=5.38
Max/Min=32.75



CalcPts_1
Illuminance (Fc)
Average=1.99 Maximum=13.1 Minimum=0.4 Avg/Min=4.98
Max/Min=32.75