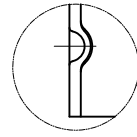
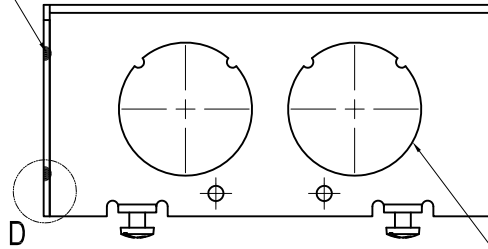


<b>SIDES</b>	<b>BOTTOM</b>
8 1" KNOCKOUTS	
2 PCS 8-32X1/2 Screws Installed	
Material: Steel-0.0625"-G60 Galvanized	

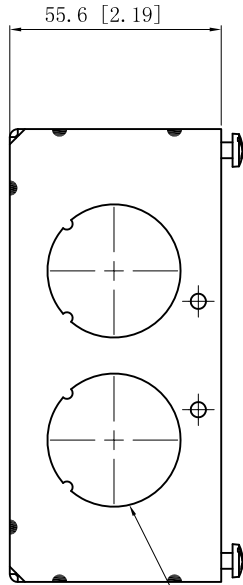
12 PLACES SPOT WELDING



WELDING STYLE DETAIL VIEW D

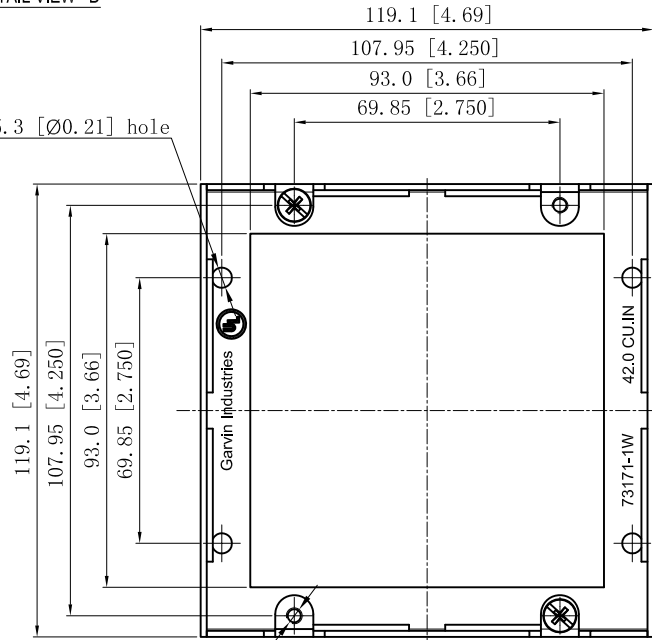


4 1" MOON KNOCKOUTS  $\phi=35.00$  [ $\phi=1.38$ ]



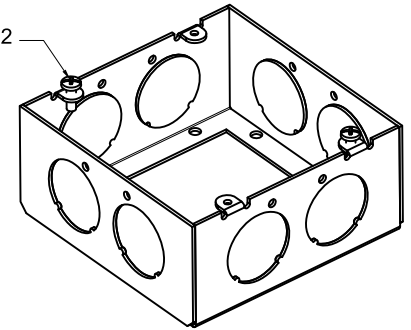
4 1" MOON KNOCKOUTS  $\phi=35.00$  [ $\phi=1.38$ ]

8- $\phi 5.3$  [ $\phi 0.21$ ] hole



4-#8-32 UNC HOLE

#8-32, X2



DESCRIPTION
TRADE REFERENCE TERMS

This data sheet is for reference only. GARVIN INDUSTRIES reserves the right to make changes to the design without prior notice.

STANDARD PACKING
25 PCS

<b>GARVIN INDUSTRIES</b>		
TITLE 4-11/16" SQUARE EXTENSION RINGS 2-1/8" DEEP		
SIZE A4	DWG NO. 73171-1W	REV A
DATA SHEET		