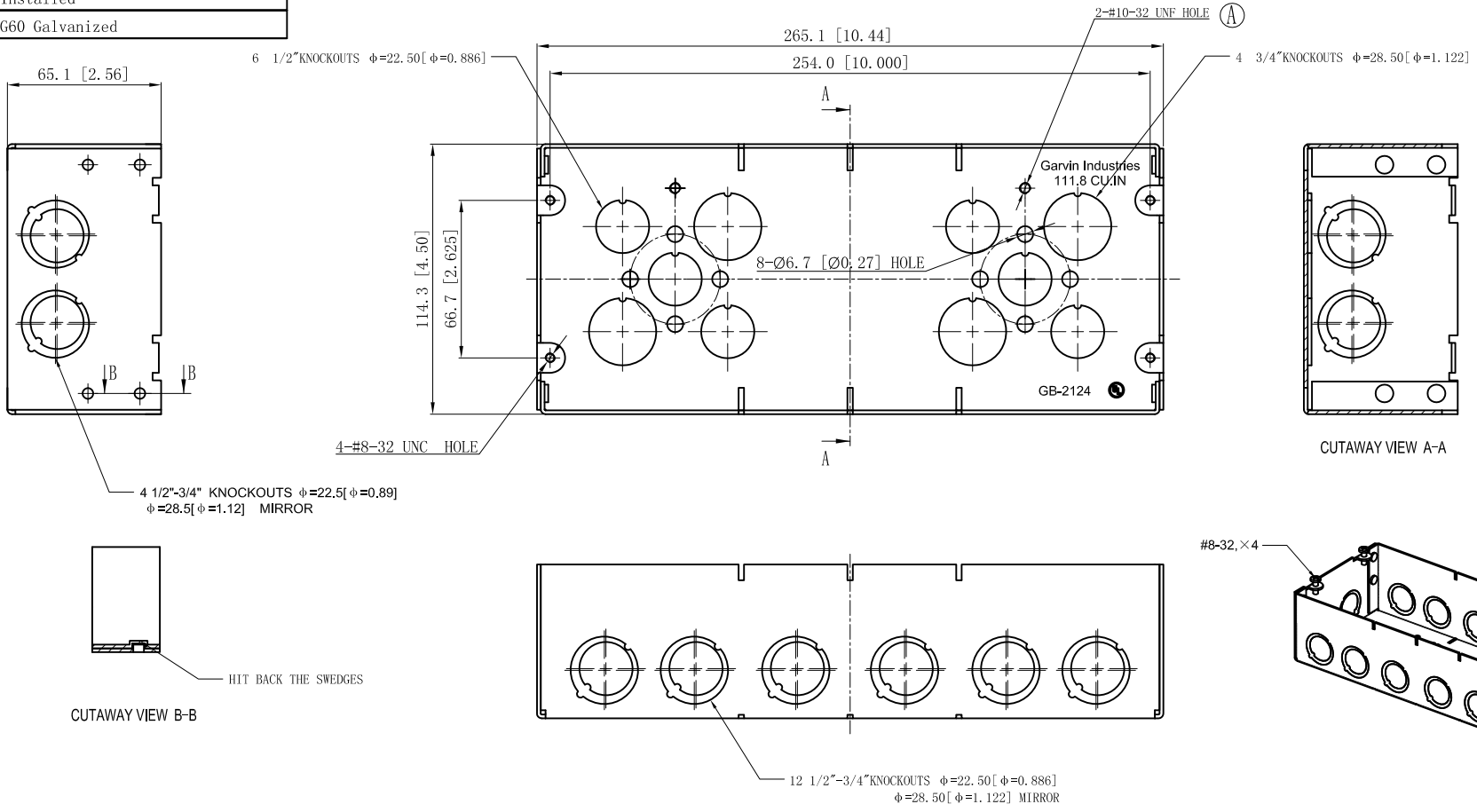


SIDES	BOTTOM
16 1/2"-3/4" KNOCKOUTS	6 1/2" KNOCKOUTS
	4 3/4" KNOCKOUTS
4 PCS 8-32x1/2 Screws Installed	
Material: Steel-0.0625"-G60 Galvanized	



DESCRIPTION
TRADE REFERENCE TERMS

STANDARD PACKING
20 PCS

This data sheet is for reference only .GARVIN INDUSTRIES reserves the right to make changes to the design without prior notice.

GARVIN INDUSTRIES		
2-1/2" DEEP MULTI-GANG BOXES		
SIZE A4	DWG NO. GB-2124	REV E
DATA SHEET		