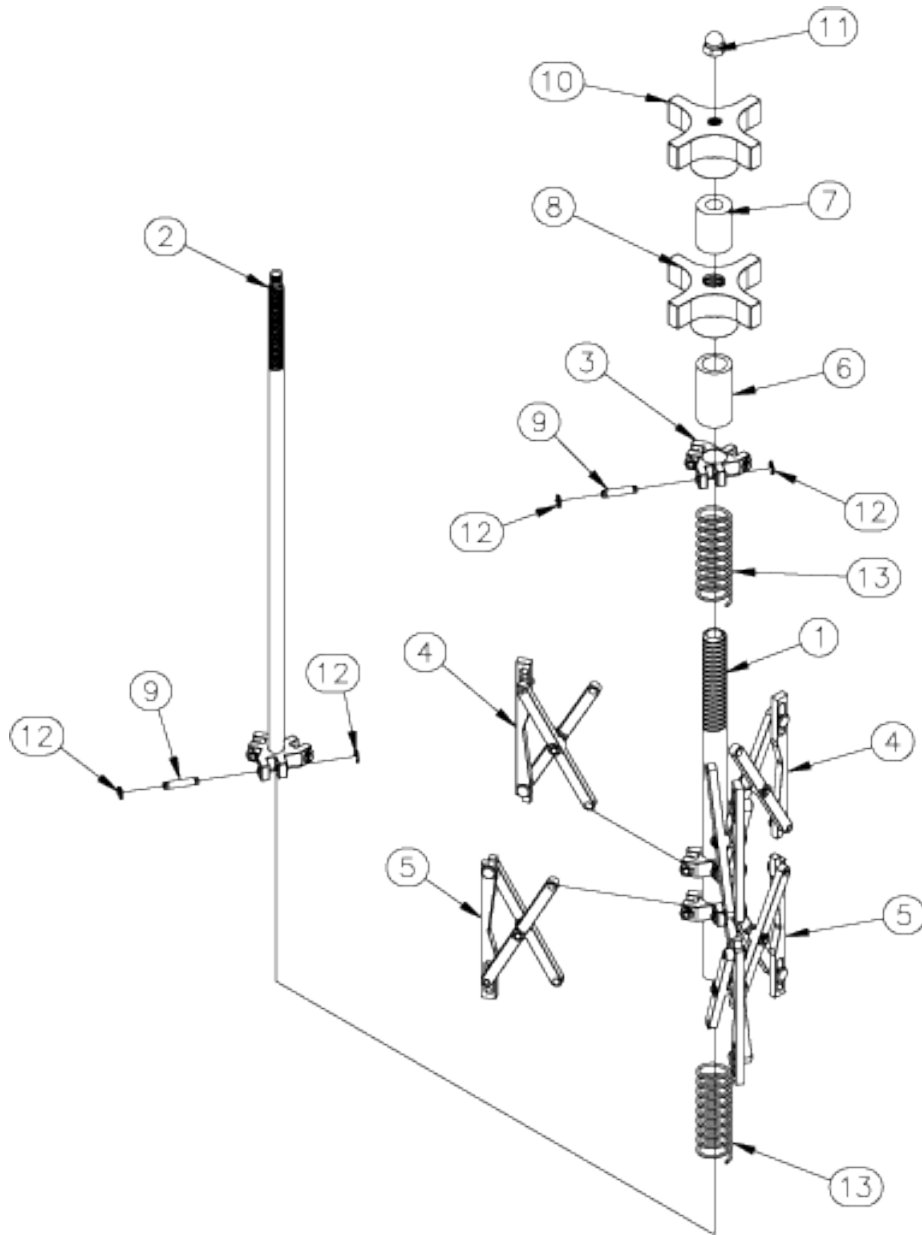
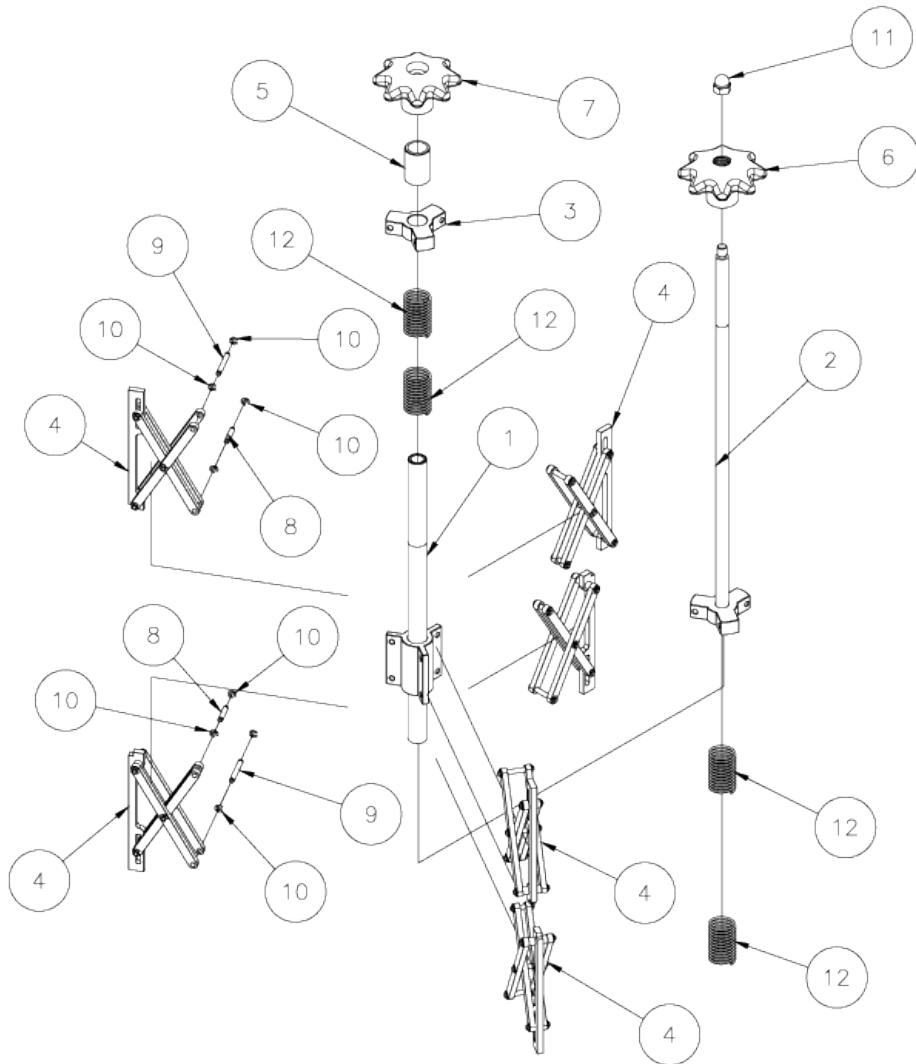


INTERNAL FIT-UP CLAMP 2"- 4" (784100)



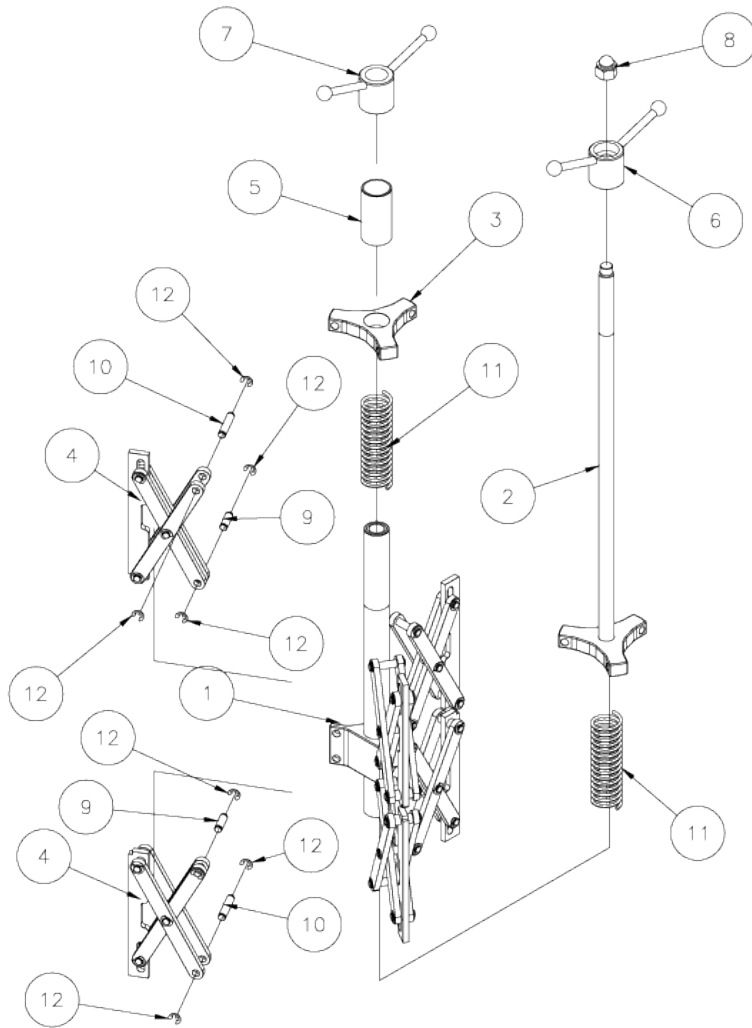
Item	Part No.	Description	Qty
1	784140	CENTER COLLAR WELDMENT	1
2	784128	CENTER SHAFT WELDMENT	1
3	784130	TOP & CENTER COLLAR	1
4	784136	FLANGE JAW ARM ASSEMBLY	3
5	784135	PIPE JAW ARM ASSEMBLY	3
6	784138	SPACER, LARGE	1
7	784137	SPACER, SMALL	1
8	784119	KNOB 1/2 STUB ACME	1
9	774152	PIN, STRAIGHT 5/32 DIA	12
10	784120	KNOB 5/16 STUB ACME	1
11	774159	CAP NUT, 1/4 - 20 PLATED	1
12	774157	E CLIP 5/32	24
13	776216	SPRING, CENTURY #71924	2

INTERNAL FIT-UP CLAMP 4"- 8" (784102)



Item	Part No.	Description	Qty
1	784155	CENTER COLLAR WELDMENT 4-8"	1
2	784160	CENTER SHAFT WELDMENT 4-8"	1
3	784153	COLLAR, TOP 4-8"	1
4	784150	JAW ARM ASSEMBLY MEDIUM	6
5	784121	CENTER SPACER	1
6	784123	KNOB 3/4 ACME THREAD	1
7	784124	KNOB 1/2 ACME	1
8	774148	PIN, STRAIGHT 3/16 X .960"	6
9	774149	PIN, STRAIGHT 3/16 X 1.460"	6
10	774158	E CLIP 3/16	24
11	774160	CAP NUT, 3/8 - 16 PLATED	1
12	776217	SPRING, CENTURY #72410	4

INTERNAL FIT-UP CLAMP 8"- 12" (784103)



Item	Part No.	Description	Qty
1	784156	CENTER COLLAR WELDMENT 8-12"	1
2	784161	CENTER SHAFT WELDMENT 8-12"	1
3	784154	COLLAR, TOP 8-12"	1
4	784151	JAW ARM ASSY. LARGE	6
5	784163	CENTER SPACER 3"	1
6	784164	HANDLE, 3/4 ACME THREAD 8-12"	1
7	784165	HANDLE, 1-1/4 ACME THREAD 8-12"	1
8	774162	CAP NUT, 5/8-11 PLATED	1
9	774146	PIN, STRAIGHT 3/8 X 1.188"	6
10	774147	PIN, STRAIGHT 3/8 X 1.812"	6
11	776220	SPRING, CENTURY #11509	2
12	774145	E CLIP 3/8	24