



# Southwire™

## ROMEX® BRAND SMARTBOX™ LOW VOLTAGE BOX-PVC

### FEATURES

- Leveling tab for easy alignment to adjacent box
- Heavy 42 lbs. mounting screws included
- Horizontal or vertical mount
- #6-32 threaded device mounting holes

### APPLICATIONS

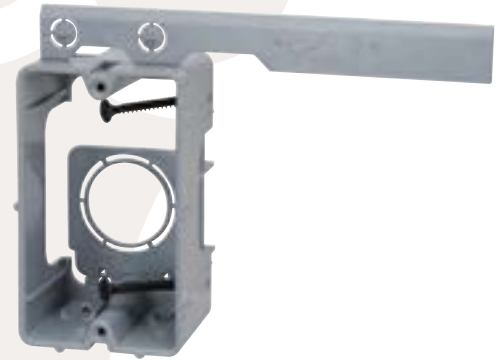
- Use to run low voltage cable to where TV and computer locations are suited

### STANDARD MATERIAL

- PVC

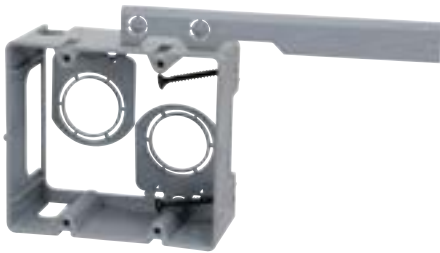
### CERTIFICATIONS

- RoHS Compliant



MSBLV2G

 **RoHS**



MSBLV2G

PART #	DESCRIPTION	CUBIC INCHES (CM³)	MASTER QTY.
MSBLV1G	1 GANG	10.75 (176.16)	16
MSBLV2G	2 GANG	20.84 (341.51)	50

Rev. 1, 3/24

**BUILT FOR DURABILITY.  
BUILT FOR RELIABILITY.  
BUILT FOR WORK.™**

**1-855-798-6657 | SOUTHWIRE.COM**

©2024 Southwire Company, LLC. All rights reserved.  
\*Registered Trademark & ™Trademark of Southwire Company, LLC.