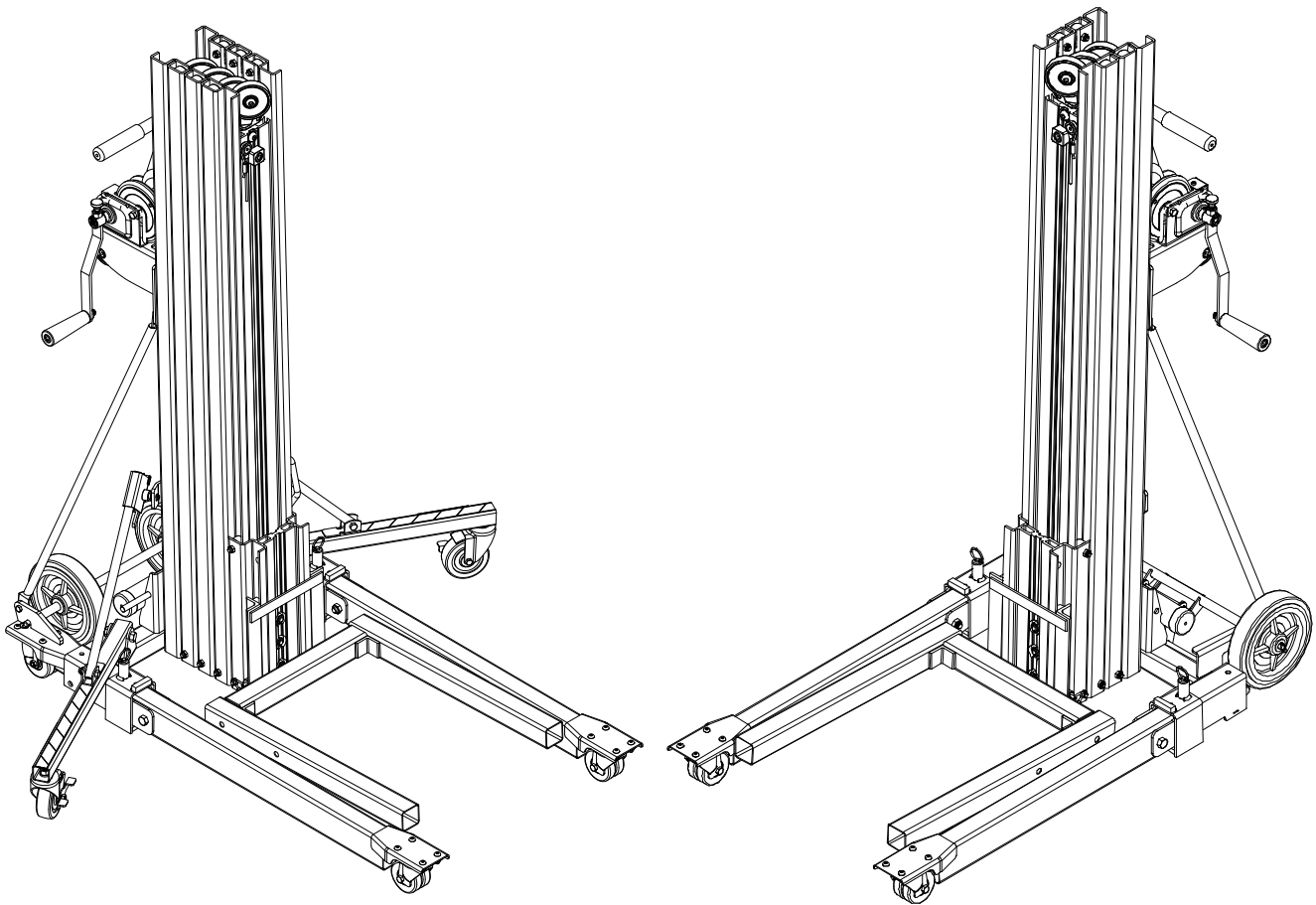

PARTS MANUAL

SERIES 2400 CONTRACTOR LIFT



SUMNER*
A Southwire Company

USA

7514 Alabonson Rd.
Houston, TX 77088
ph: 281-999-6900
fax: 281-999-6966

CANADA

75 Saltsman Drive, Unit 5
Cambridge, Ontario N3H 4R7
ph: 519-653-5300
fax: 519-653-5305

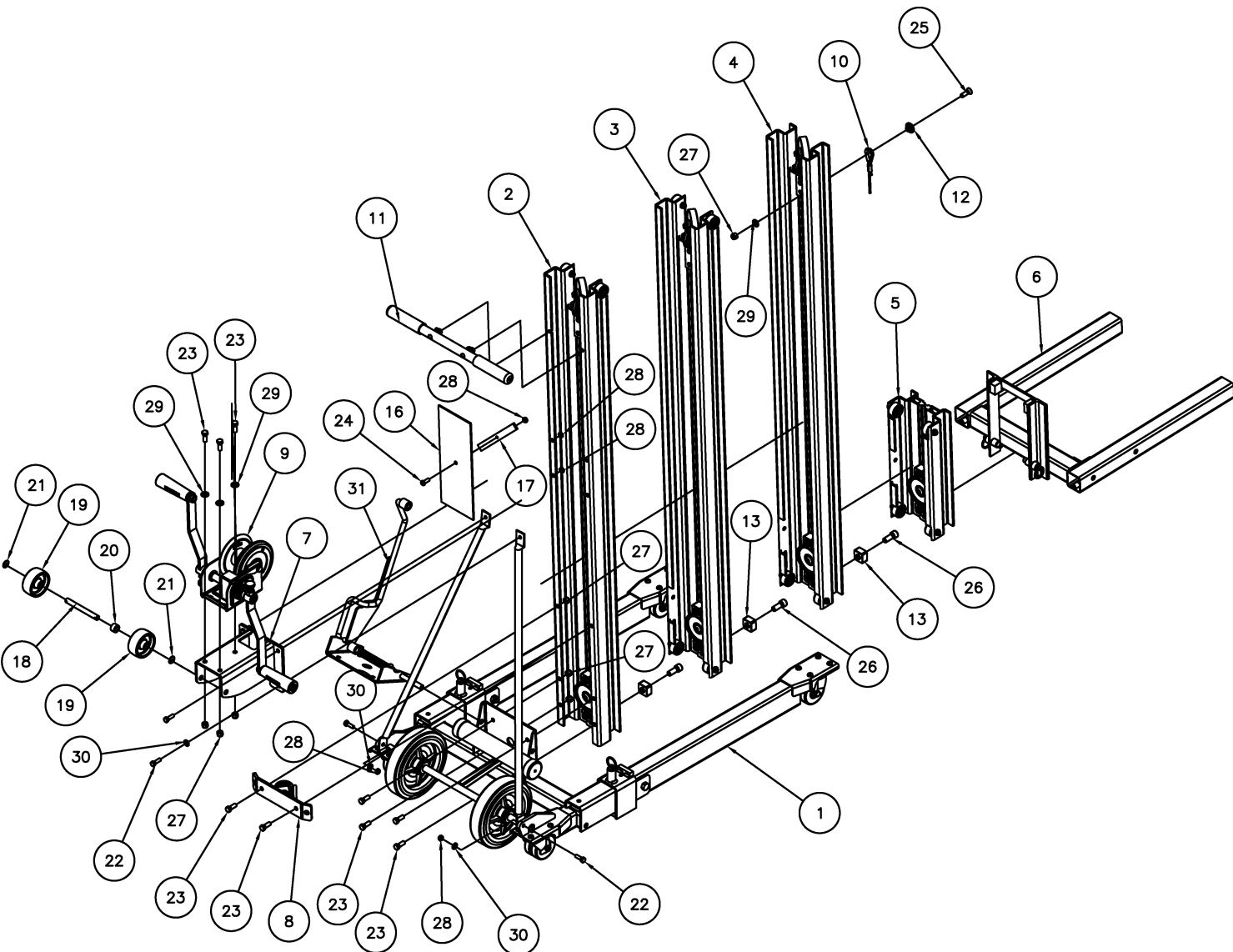
NETHERLANDS

Midden Engweg
21NL-3882TS Putten
Netherlands
europeansales.com
ph: + 31 (0) 85 489 0284

UK

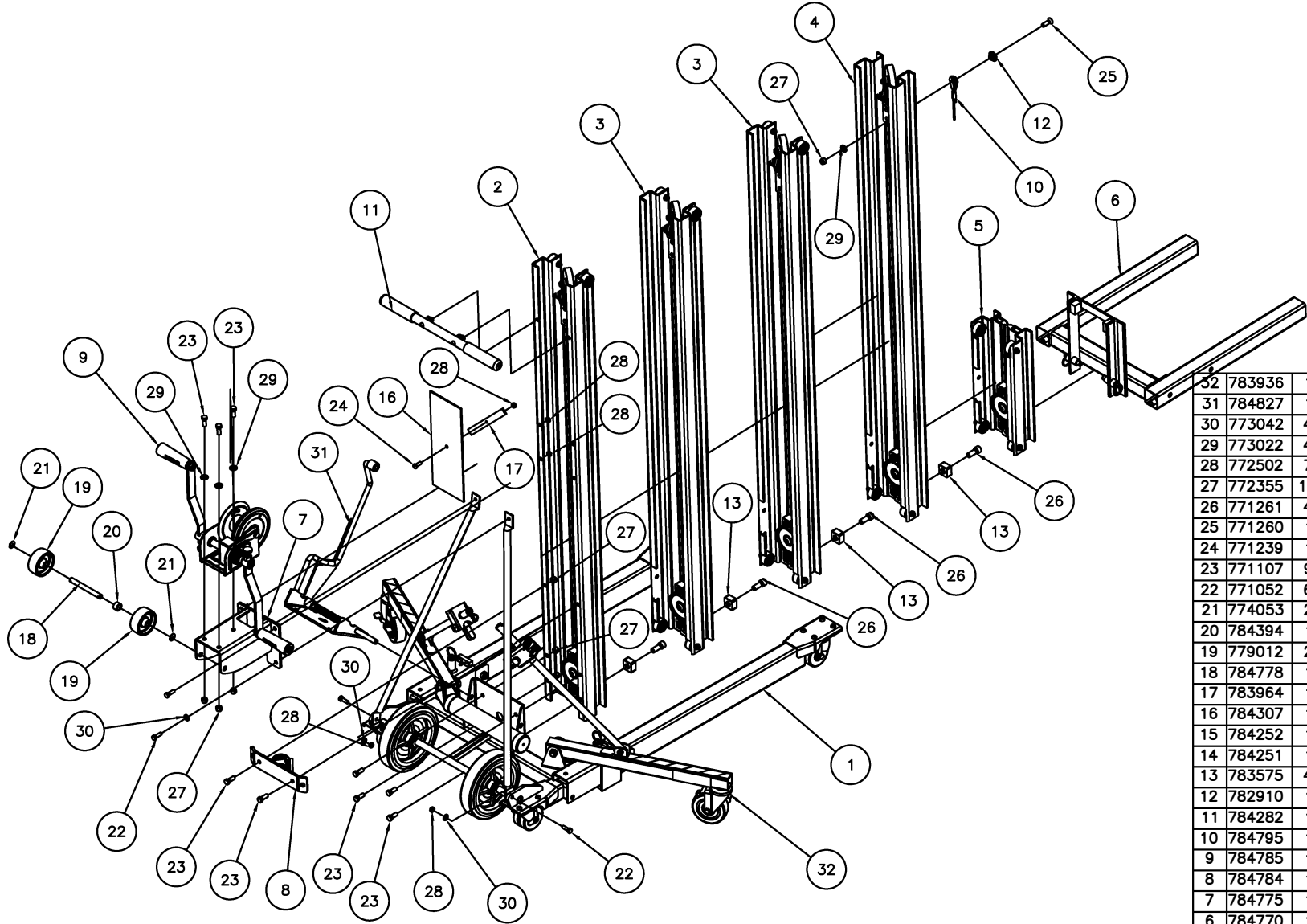
Unit 3 Kempton Road
Keytec 7 Business Park
Persnore, Worcestershire
WR 10 2TA, UK
ph: + 44 (0) 1386 556278

784750 - 2412 LIFT ASSEMBLY



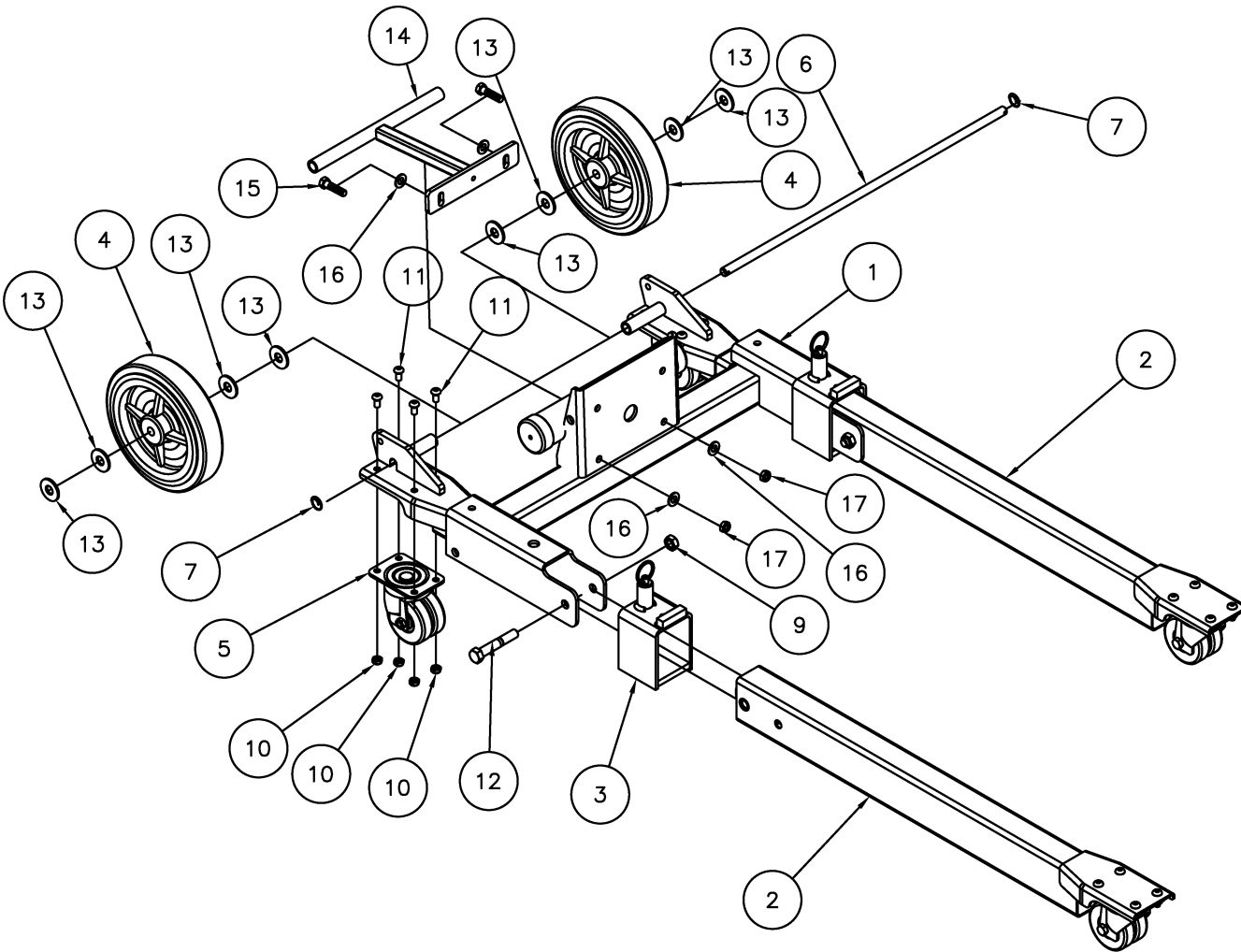
| | | | |
|------------|----------|-----|--------------------------------|
| 31 | 784827 | 1 | MAST HOLD DOWN, BAR TYPE 2416 |
| 30 | 773042 | 4 | WASHER, FLAT 5/16 |
| 29 | 773022 | 4 | WASHER, FLAT 3/8 HARDENED |
| 28 | 772502 | 7 | NUT, INSERT JAM 5/16-18 |
| 27 | 772355 | 10 | NUT, INSERT LOCK 3/8-16 |
| 26 | 771261 | 3 | SCREW, SHC 1/2-13 X 1-1/4 |
| 25 | 771260 | 1 | SCREW, FHSC 3/8-16 X 1-1/4 |
| 24 | 771239 | 1 | SCREW, BHC 5/16-18 X 7/8 |
| 23 | 771107 | 9 | SCREW, HHC 3/8-16 X 1 |
| 22 | 771052 | 6 | SCREW, HHC 5/16-18 X 1 PLTD |
| 21 | 774053 | 2 | COTTER, CIRCLE Z/P .048 X 3/4 |
| 20 | 784394 | 1 | SPACER, PULLEY 1/2" |
| 19 | 779012 | 2 | WHEEL, POLY OLEFIN 3" |
| 18 | 784778 | 1 | SHAFT, WHEEL 2400 LIFT |
| 17 | 783964 | 1 | STRAP - 6" |
| 16 | 784307 | 1 | MAST COVER, SHORT 2200 LIFT |
| 15 | 784252 | 1 | MAST BRACE (RIGHT) 2200 LIFT |
| 14 | 784251 | 1 | MAST BRACE (LEFT) 2200 LIFT |
| 13 | 783575 | 3 | STOP BLOCK |
| 12 | 782910 | 1 | ROPE RETAINER WASHER |
| 11 | 784282 | 1 | TOP HANDLE ASSEMBLY 2200 |
| 10 | 784790 | 1 | LOAD LINE 2412 |
| 9 | 784785 | 1 | WINCH ASSEMBLY, 2400 LIFT |
| 8 | 784784 | 1 | SPREADER PLATE ASSEMBLY 2400 |
| 7 | 784775 | 1 | WINCH MOUNTING WELDMENT 2400 |
| 6 | 784770 | 1 | FORK ASSEMBLY 2400 |
| 5 | 784765 | 1 | CARRIAGE ASSEMBLY 2400 |
| 4 | 784740 | 1 | TOP MAST ASSEMBLY 2412 |
| 3 | 784730 | 1 | CENTER MAST ASSEMBLY 2412 |
| 2 | 784720 | 1 | BOTTOM MAST ASSEMBLY 2412 LIFT |
| 1 | 784715 | 1 | BASE ASSEMBLY 2412 LIFT |
| Item No. | Part No. | Qty | Description |
| Parts List | | | |

784751 - 2416 LIFT ASSEMBLY



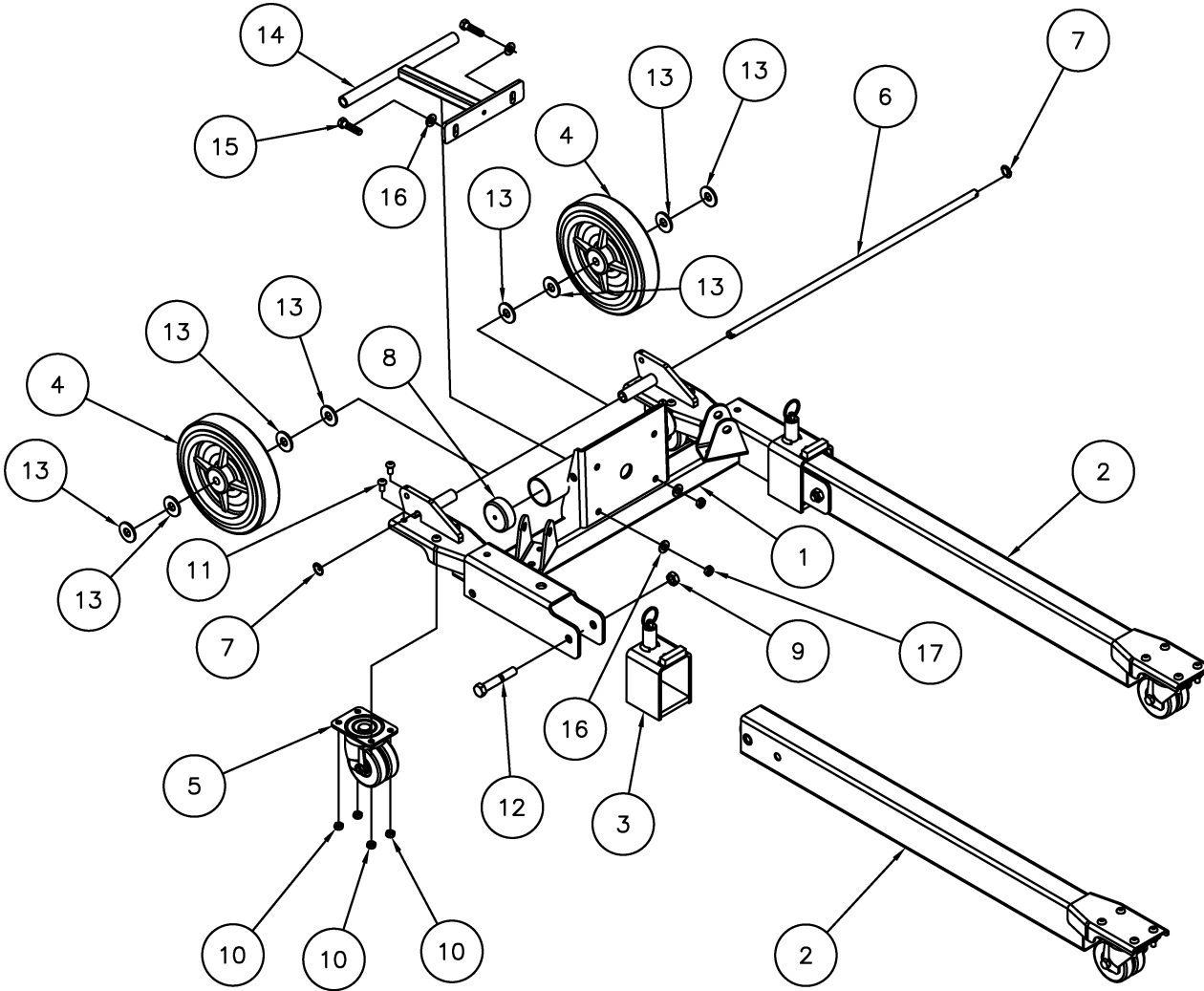
| | | | |
|----------|--------|-----|--------------------------------|
| 32 | 783936 | 1 | OUTRIGGER ASSEMBLY 2416 LIFT |
| 31 | 784827 | 1 | MAST HOLD DOWN, BAR TYPE 2416 |
| 30 | 773042 | 4 | WASHER, FLAT 5/16 |
| 29 | 773022 | 4 | WASHER, FLAT 3/8 HARDENED |
| 28 | 772502 | 7 | NUT, INSERT JAM 5/16-18 |
| 27 | 772355 | 10 | NUT, INSERT LOCK 3/8-16 |
| 26 | 771261 | 4 | SCREW, SHC 1/2-13 X 1-1/4 |
| 25 | 771260 | 1 | SCREW, FHSC 3/8-16 X 1-1/4 |
| 24 | 771239 | 1 | SCREW, BHC 5/16-18 X 7/8 |
| 23 | 771107 | 9 | SCREW, HHC 3/8-16 X 1 |
| 22 | 771052 | 6 | SCREW, HHC 5/16-18 X 1 PLTD |
| 21 | 774053 | 2 | COTTER, CIRCLE Z/P .048 X 3/4 |
| 20 | 784394 | 1 | SPACER, PULLEY 1/2" |
| 19 | 779012 | 2 | WHEEL, POLY OLEFIN 3" |
| 18 | 784778 | 1 | SHAFT, WHEEL 2400 LIFT |
| 17 | 783964 | 1 | STRAP - 6" |
| 16 | 784307 | 1 | MAST COVER, SHORT 2200 LIFT |
| 15 | 784252 | 1 | MAST BRACE (RIGHT) 2200 LIFT |
| 14 | 784251 | 1 | MAST BRACE (LEFT) 2200 LIFT |
| 13 | 783575 | 4 | STOP BLOCK |
| 12 | 782910 | 1 | ROPE RETAINER WASHER |
| 11 | 784282 | 1 | TOP HANDLE ASSEMBLY 2200 |
| 10 | 784795 | 1 | LOAD LINE 2416 |
| 9 | 784785 | 1 | WINCH ASSEMBLY, 2400 LIFT |
| 8 | 784784 | 1 | SPREADER PLATE ASSEMBLY 2400 |
| 7 | 784775 | 1 | WINCH MOUNTING WELDMENT 2400 |
| 6 | 784770 | 1 | FORK ASSEMBLY 2400 |
| 5 | 784765 | 1 | CARRIAGE ASSEMBKY 2400 |
| 4 | 784740 | 1 | TOP MAST ASSEMBLY 2412 |
| 3 | 784730 | 2 | CENTER MAST ASSEMBLY 2412 |
| 2 | 784720 | 1 | BOTTOM MAST ASSEMBLY 2412 LIFT |
| 1 | 784717 | 1 | BASE ASSEMBLY 2416 LIFT |
| Item No. | Part | Qty | Description |
| | | | Parts List |

784715 - 2412 BASE ASSEMBLY



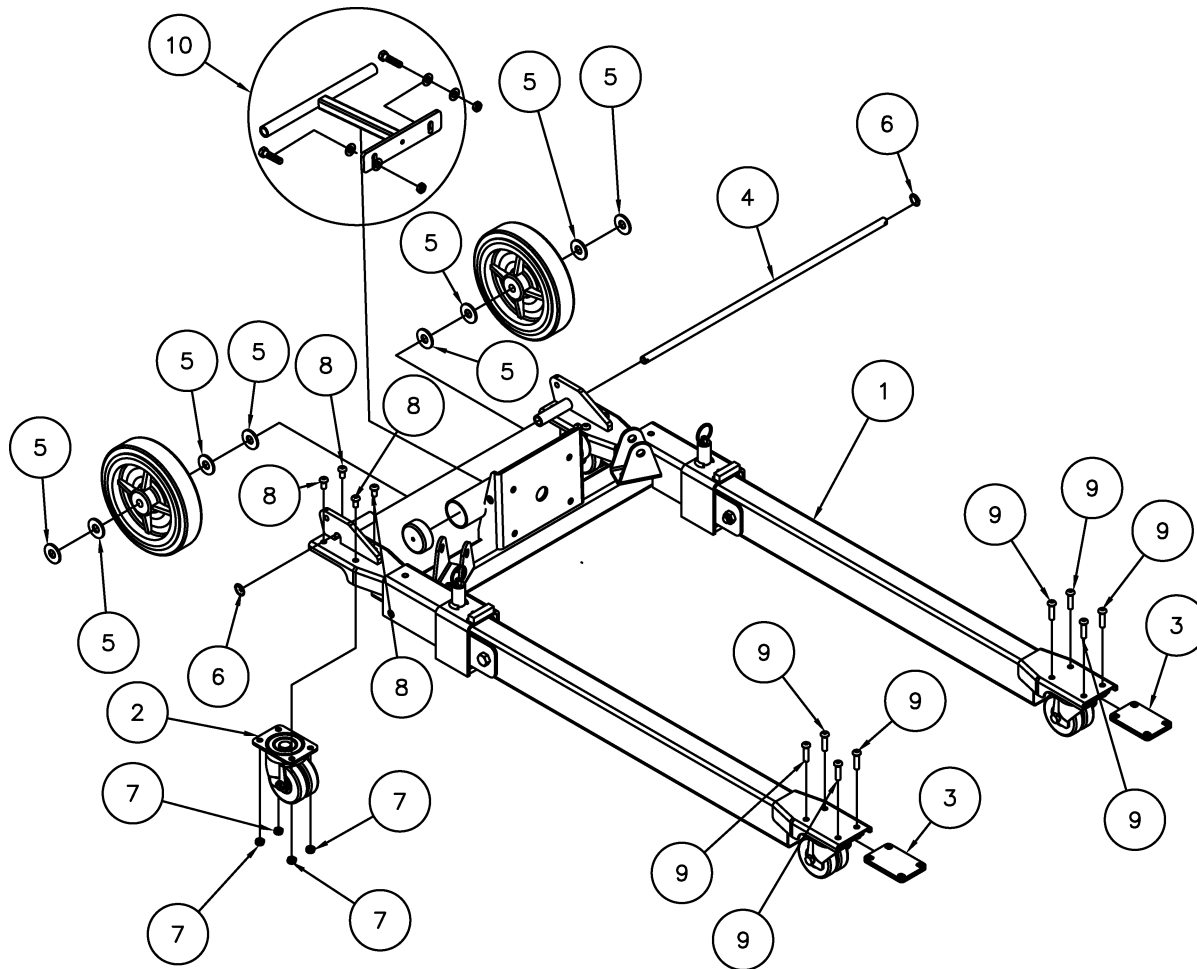
| 17 | 772350 | 2 | NUT,INSERT JAM 3/8-16 |
|------------|----------|-----|----------------------------------|
| 16 | 773040 | 4 | WASHER,FLAT 3/8 USS |
| 15 | 771090 | 2 | SCREW,HHC 3/8-16 X 1-1/2 |
| 14 | 784907 | 1 | AXLE SUPPORT REINFORCEMENT WLDMT |
| 13 | 773060 | 8 | WASHER, FLAT 1/2 USS |
| 12 | 771142 | 2 | SCREW, HHC 1/2-13 X 3 |
| 11 | 771049 | 8 | SCREW, BHC 5/16-18 X 5/8 |
| 10 | 772502 | 8 | NUT, INSERT JAM 5/16-18 |
| 9 | 772358 | 2 | NUT, INSERT JAM 1/2-13 |
| 8 | 779905 | 2 | CAP, 2" OD TUBE, BLK |
| 7 | 774053 | 2 | COTTER, CIRCLE Z/P .048 X 3/4 |
| 6 | 784585 | 1 | AXLE, 2412 LIFT |
| 5 | 779036 | 2 | CASTER, 3" DUAL WHEEL W/BRAKE |
| 4 | 779031 | 2 | WHEEL, 8" THERMOPLASTIC GRAY |
| 3 | 784820 | 2 | LEG LOCK ASSEMBLY |
| 2 | 784810 | 2 | FRONT LEG ASSY, 2412 LIFT |
| 1 | 784800 | 1 | BASE WELDMENT 2412 LIFT |
| Item | Part No. | Qty | Description |
| Parts List | | | |

784717 - 2416 BASE ASSEMBLY



| | | | |
|------------|----------|-----|----------------------------------|
| 17 | 772350 | 2 | NUT,INSERT JAM 3/8-16 |
| 16 | 773040 | 4 | WASHER,FLAT 3/8 USS |
| 15 | 771090 | 2 | SCREW,HHC 3/8-16 X 1-1/2 |
| 14 | 784907 | 1 | AXLE SUPPORT REINFORCEMENT WLDMT |
| 13 | 773060 | 8 | WASHER, FLAT 1/2 USS |
| 12 | 771142 | 2 | SCREW, HHC 1/2-13 X 3 |
| 11 | 771049 | 8 | SCREW, BHC 5/16-18 X 5/8 |
| 10 | 772502 | 8 | NUT, INSERT JAM 5/16-18 |
| 9 | 772358 | 2 | NUT, INSERT JAM 1/2-13 |
| 8 | 779905 | 2 | CAP, 2" OD TUBE, BLK |
| 7 | 774053 | 2 | COTTER, CIRCLE Z/P .048 X 3/4 |
| 6 | 784585 | 1 | AXLE, 2412 LIFT |
| 5 | 779036 | 2 | CASTER, 3" DUAL WHEEL W/BRAKE |
| 4 | 779031 | 2 | WHEEL, 8" THERMOPLASTIC GRAY |
| 3 | 784820 | 2 | LEG LOCK ASSEMBLY |
| 2 | 784813 | 2 | FRONT LEG ASSY, 2416 LIFT |
| 1 | 784799 | 1 | BASE WELDMENT 2416 LIFT |
| Item | Part No. | Qty | Description |
| Parts List | | | |

784714 - 2416 BASE ASSEMBLY CONVERSION KIT

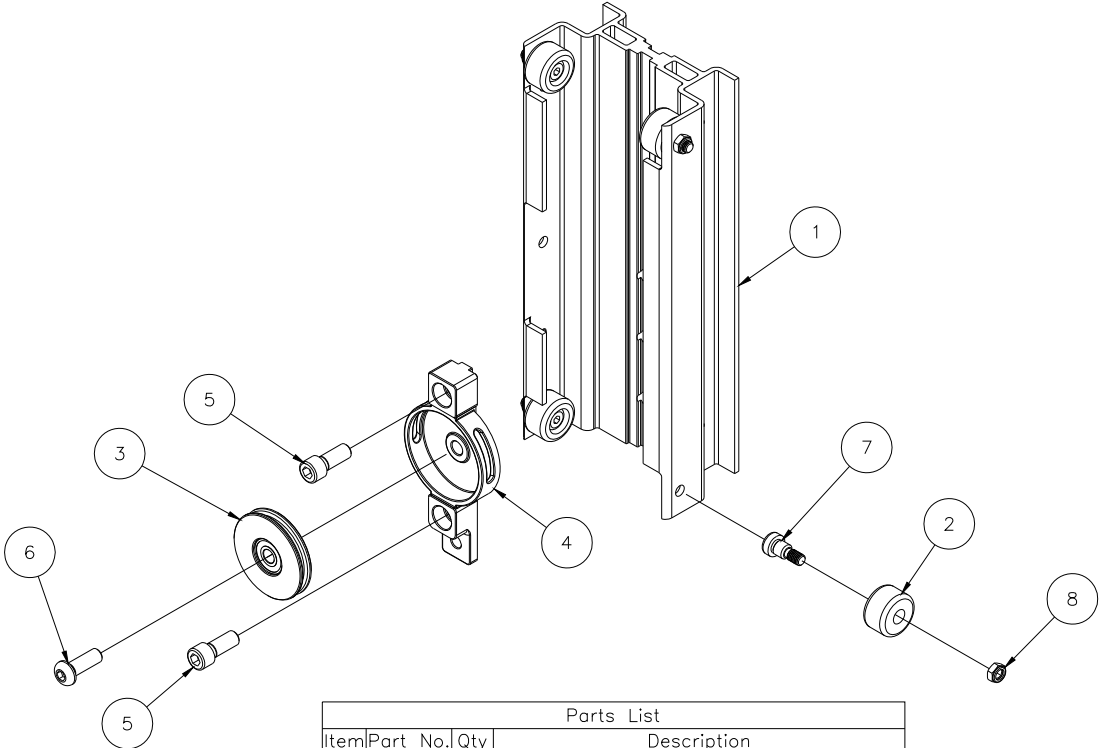


| | | | |
|------------|----------|-----|--------------------------------|
| 10 | 784906 | 1 | AXLE SUPPORT REINFORCEMENT KIT |
| 9 | 771239 | 8 | SCREW, BHC 5/16-18 X 7/8 |
| 8 | 771049 | 8 | SCREW, BHC 5/16-18 X 5/8 |
| 7 | 772502 | 16 | NUT, INSERT JAM 5/16-18 |
| 6 | 774053 | 2 | COTIER, CIRCLE Z/P .048 X 3/4 |
| 5 | 773060 | 4 | WASHER, FLAT 1/2 USS |
| 4 | 784585 | 1 | AXLE, 2412 LIFT |
| 3 | 783098 | 2 | SPACER, CASTER PLATE |
| 2 | 779036 | 2 | CASTER, 3" DUAL WHEEL W/BRAKE |
| 1 | 784800 | 1 | BASE WELDMENT 2412 LIFT |
| Item | Part No. | Qty | Description |
| Parts List | | | |

CUSTOMER WILL REUSE EXISTING LEG WELDMENTS, FRONT CASTERS, LEG LOCKS, AND 8" THERMOPLASTIC WHEELS.

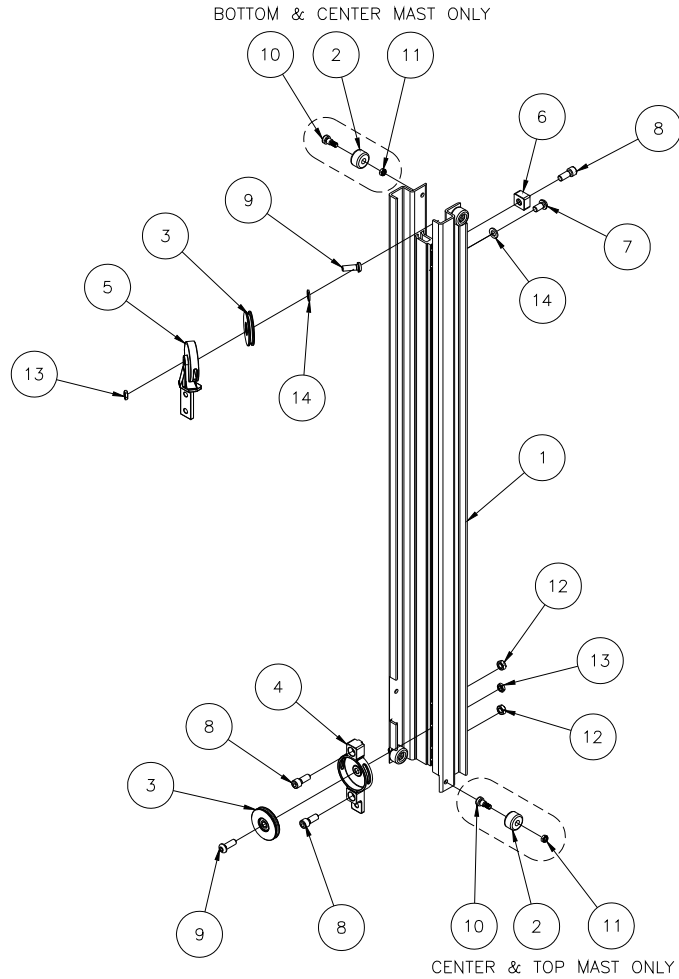
IF LIFT SERIAL NUMBER IS #6902 OR HIGHER THE CUSTOMER WILL REUSE THE AXLE SUPPORT REINFORCEMENT KIT.

784765 - CARRIAGE ASSEMBLY



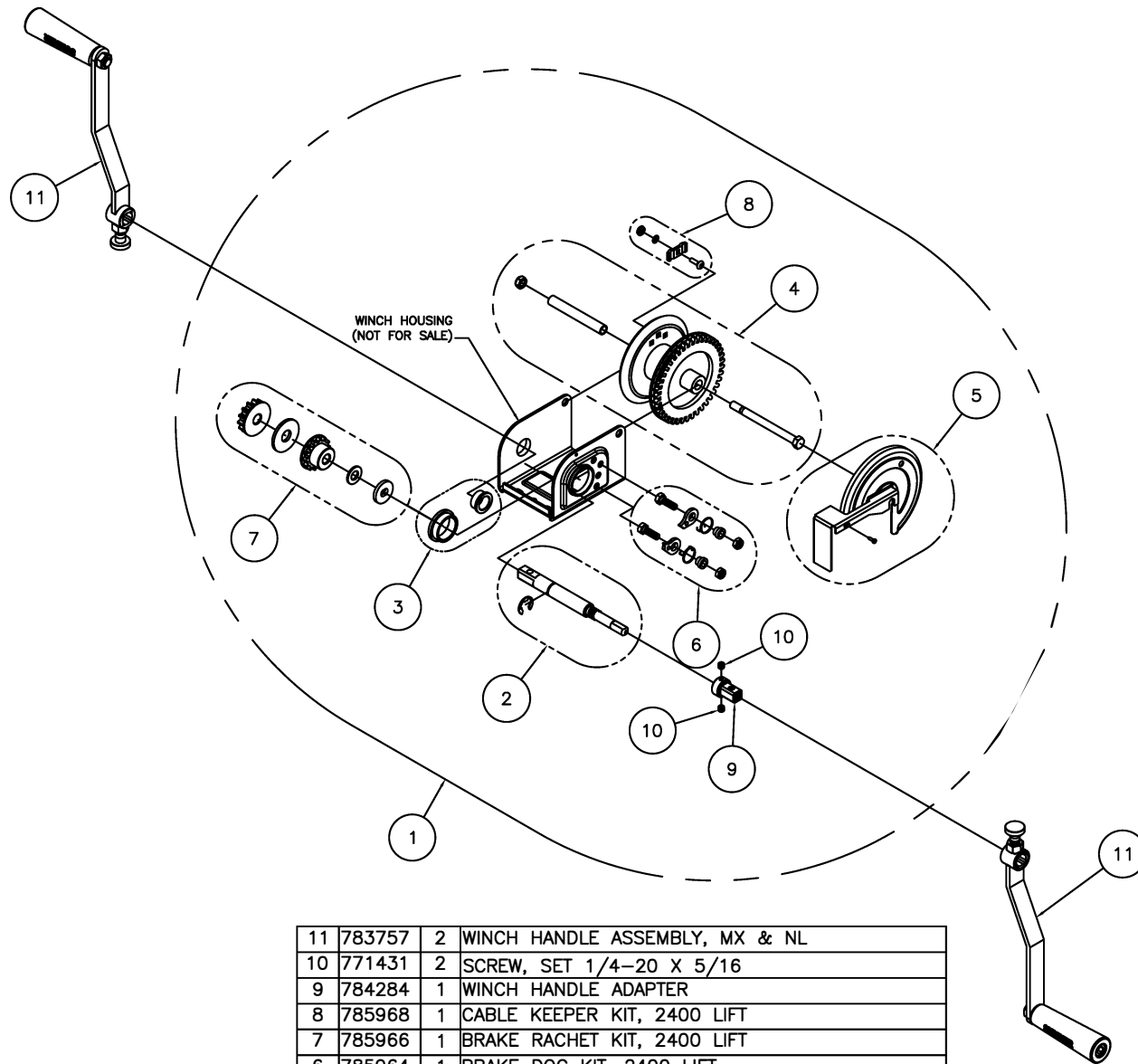
| Parts List | | | |
|------------|----------|-----|-----------------------------|
| Item | Part No. | Qty | Description |
| 1 | 784766 | 1 | CARRIAGE MACHINED 2400 LIFT |
| 2 | 784722 | 4 | MAST ROLLER 2400 LIFT |
| 3 | 784724 | 1 | PULLEY ASSEMBLY 3" |
| 4 | 784705 | 1 | PULLEY COVER |
| 5 | 771261 | 2 | SCREW, SHC 1/2-13 X 1-1/4 |
| 6 | 771263 | 1 | SCREW, BHC M12-1.75 X 35 |
| 7 | 771350 | 4 | SCREW, SHOULDER 1/2 X 1/2 |
| 8 | 772350 | 4 | NUT, INSERT JAM 3/8-16 |
| 9 | 772358 | 2 | NUT, INSERT JAM 1/2-13 |
| 10 | 772505 | 1 | NUT, JAM LOCK M12 |

MAST ASSEMBLY



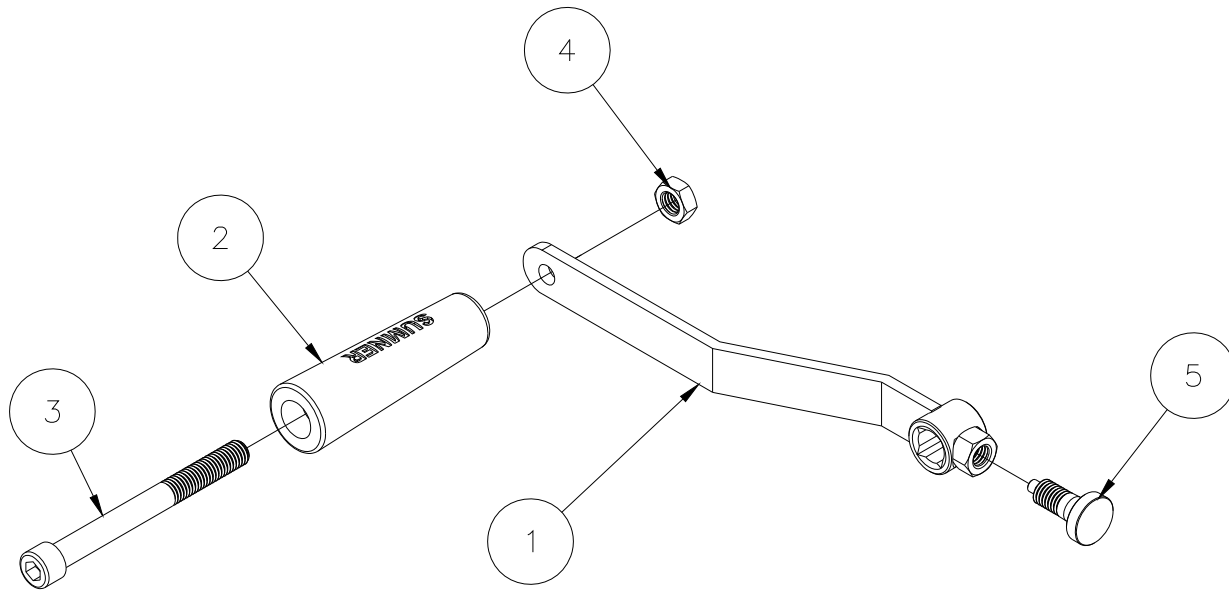
| | | | |
|------------|----------|-----|---|
| 14 | 773096 | 2 | WASHER, FLAT M12 |
| 13 | 772505 | 2 | NUT, JAM LOCK M12 |
| 12 | 772358 | 2 | NUT, INSERT JAM 1/2-13 |
| 11 | 772350 | 2 | NUT, INSERT JAM 3/8-16 (TOP & BOTTOM MAST) |
| | 772350 | 4 | NUT, INSERT JAM 3/8-16 (CENTER MAST) |
| 10 | 771350 | 2 | SCREW, SHOULDER 1/2 X 1/2 (TOP & BOTTOM MAST) |
| | 771350 | 4 | SCREW, SHOULDER 1/2 X 1/2 (CENTER MAST) |
| 9 | 771263 | 2 | SCREW, BHC M12-1.75 X 35 |
| 8 | 771261 | 3 | SCREW, SHC 1/2-13 X 1-1/4 |
| 7 | 771259 | 1 | SCREW, BHC 1/2-13 X 1 |
| 6 | 783575 | 1 | STOP BLOCK |
| 5 | 784710 | 1 | PULLEY MOUNT |
| 4 | 784705 | 1 | PULLEY COVER |
| 3 | 784724 | 2 | PULLEY ASSEMBLY 3" |
| 2 | 784722 | 2 | MAST ROLLER 2400 LIFT (TOP & BOTTOM MAST) |
| | 784722 | 4 | MAST ROLLER 2400 LIFT (CENTER MAST) |
| | 784741 | 1 | TOP MAST MACHINED 2412 |
| 1 | 784731 | 1 | CENTER MAST MACHINED 2412 |
| | 784721 | 1 | BOTTOM MAST MACHINED 2412 |
| Item | Part No. | Qty | Description |
| Parts List | | | |

784785 - WINCH ASSEMBLY, **NEW 2400 LIFT**



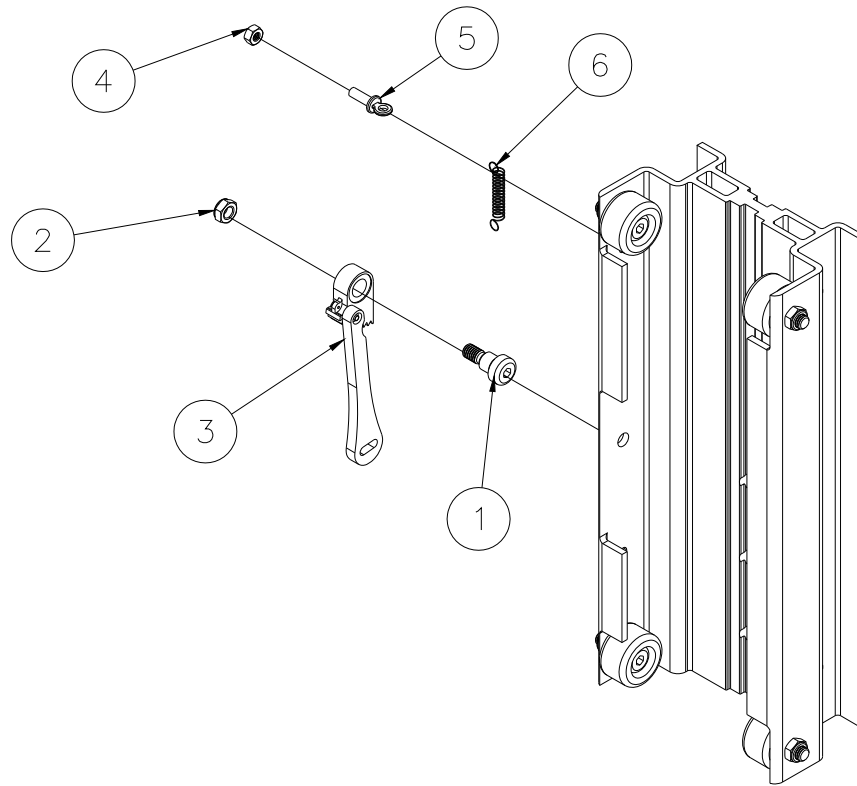
| | | | |
|----------------|--------|-----|---|
| 11 | 783757 | 2 | WINCH HANDLE ASSEMBLY, MX & NL |
| 10 | 771431 | 2 | SCREW, SET 1/4-20 X 5/16 |
| 9 | 784284 | 1 | WINCH HANDLE ADAPTER |
| 8 | 785968 | 1 | CABLE KEEPER KIT, 2400 LIFT |
| 7 | 785966 | 1 | BRAKE RACHET KIT, 2400 LIFT |
| 6 | 785964 | 1 | BRAKE DOG KIT, 2400 LIFT |
| 5 | 785962 | 1 | WINCH COVER, 2400 LIFT |
| 4 | 785960 | 1 | WINCH DRUM W/SHAFT, 2400 LIFT |
| 3 | 785958 | 1 | WINCH HOUSING BEARINGS, 2400 LIFT |
| 2 | 785957 | 1 | WINCH SHAFT KIT, 2400 LIFT (NEW THREAD) |
| 1 | 785951 | 1 | WINCH ASSEMBLY NEW, 2400 LIFT W/O HANDLES |
| Item | Part | Qty | Description |
| No. Parts List | | | |

783757 - WINCH HANDLE ASSEMBLY



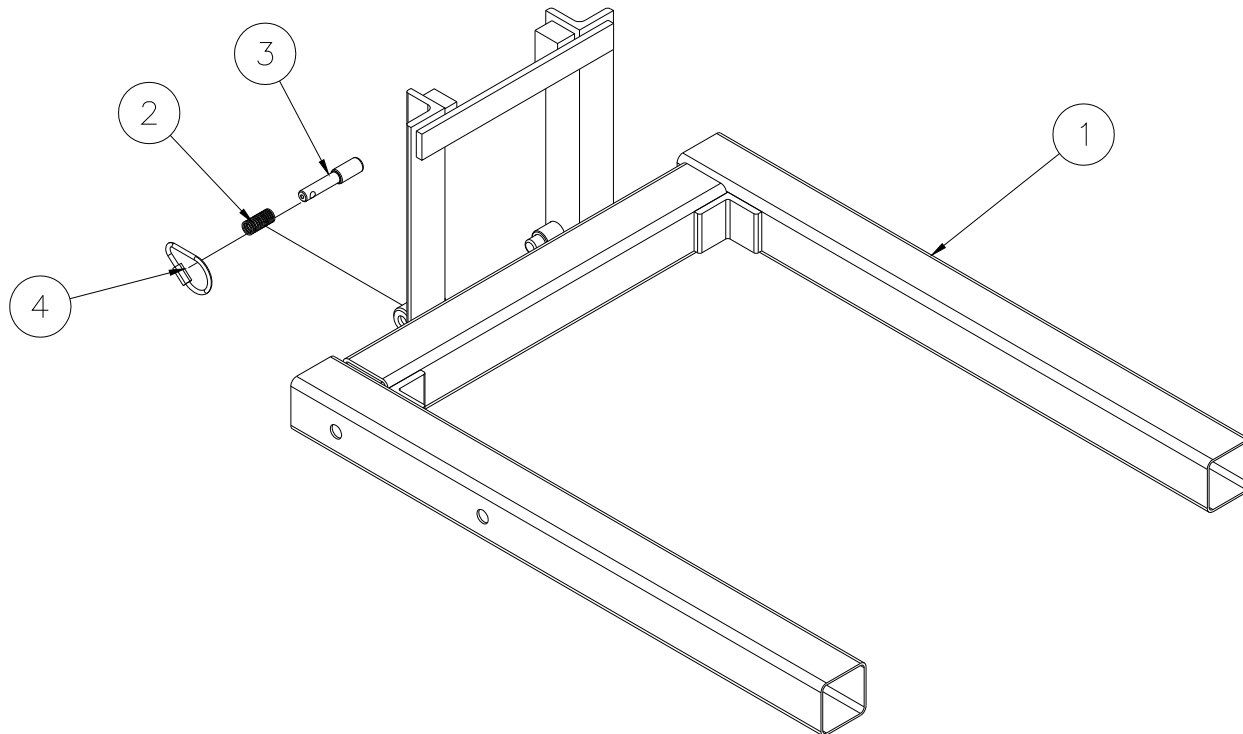
| | | | |
|------------|----------|-----|----------------------------|
| 5 | 774180 | 1 | PLUNGER ASSEMBLY |
| 4 | 772358 | 1 | 1/2-13 INSERT JAM LOCK NUT |
| 3 | 771254 | 1 | SHCS 1/2-13 x 5 |
| 2 | 780182 | 1 | WINCH HANDLE SLEEVE |
| 1 | 783756 | 1 | HANDLE WELDMENT |
| Item | Part No. | Qty | Description |
| Parts List | | | |

784755 - SAFETY BRAKE ASSEMBLY - OPTIONAL



| Parts List | | | |
|------------|----------|-----|---------------------------|
| Item | Part No. | Qty | Description |
| 1 | 771350 | 1 | SCREW, SHOULDER 1/2 X 1/2 |
| 2 | 772350 | 1 | NUT, INSERT JAM 3/8-16 |
| 3 | 784692 | 1 | SAFETY BRAKE ASSEMBLY |
| 4 | 772076 | 1 | NUT, INSERT LOCK 1/4-20 |
| 5 | 779900 | 1 | SCREW, ADJUSTING |
| 6 | 783530 | 1 | BRAKE SPRING |

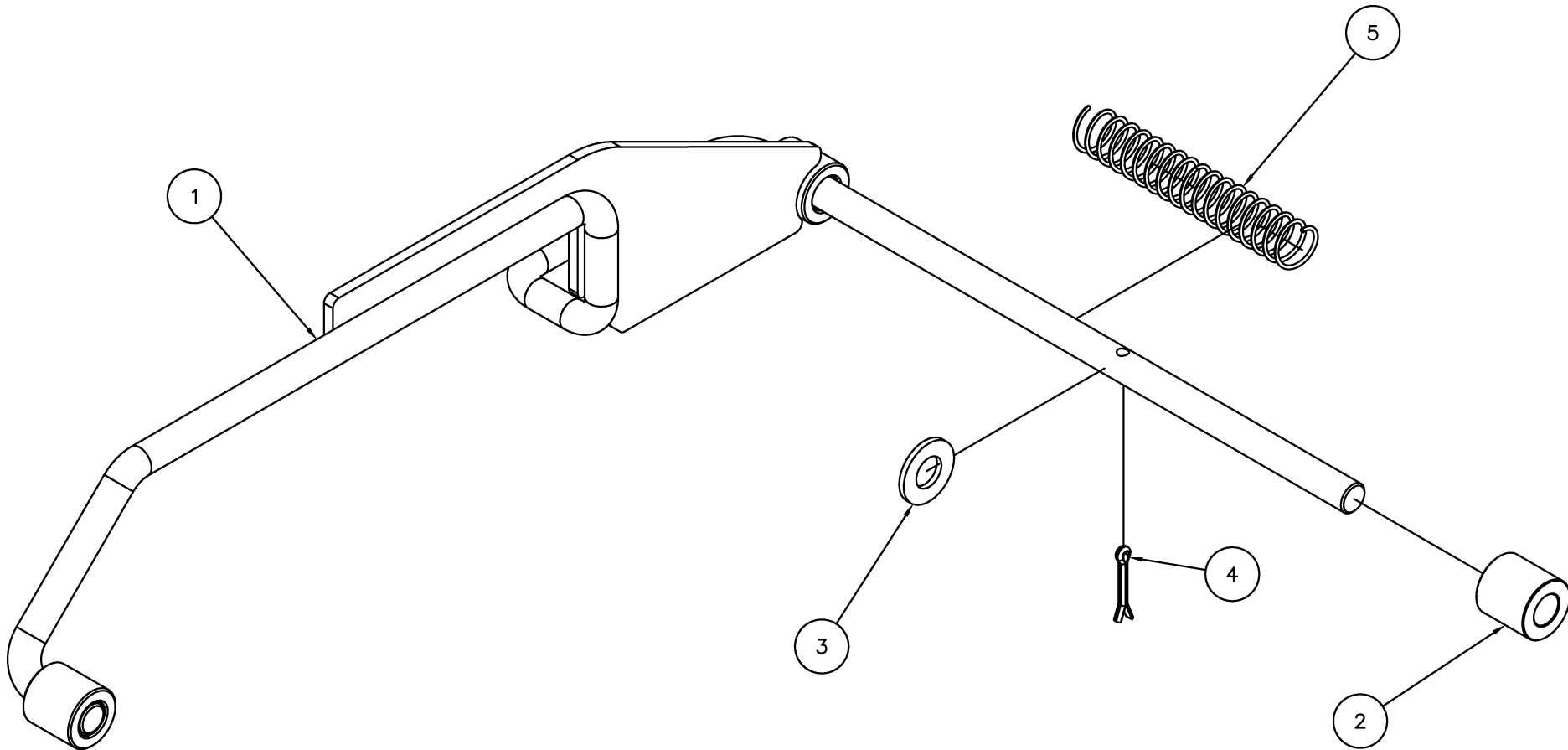
784770 - FORK ASSEMBLY



| | | | |
|------------|----------|-----|-------------------------|
| 4 | 779317 | 2 | RAPID LINK, 1/8" |
| 3 | 782510 | 2 | PLUNGER |
| 2 | 776212 | 2 | PLUNGER SPRING |
| 1 | 784771 | 1 | FORK WELDMENT 2400 LIFT |
| Item | Part No. | Qty | Description |
| Parts List | | | |

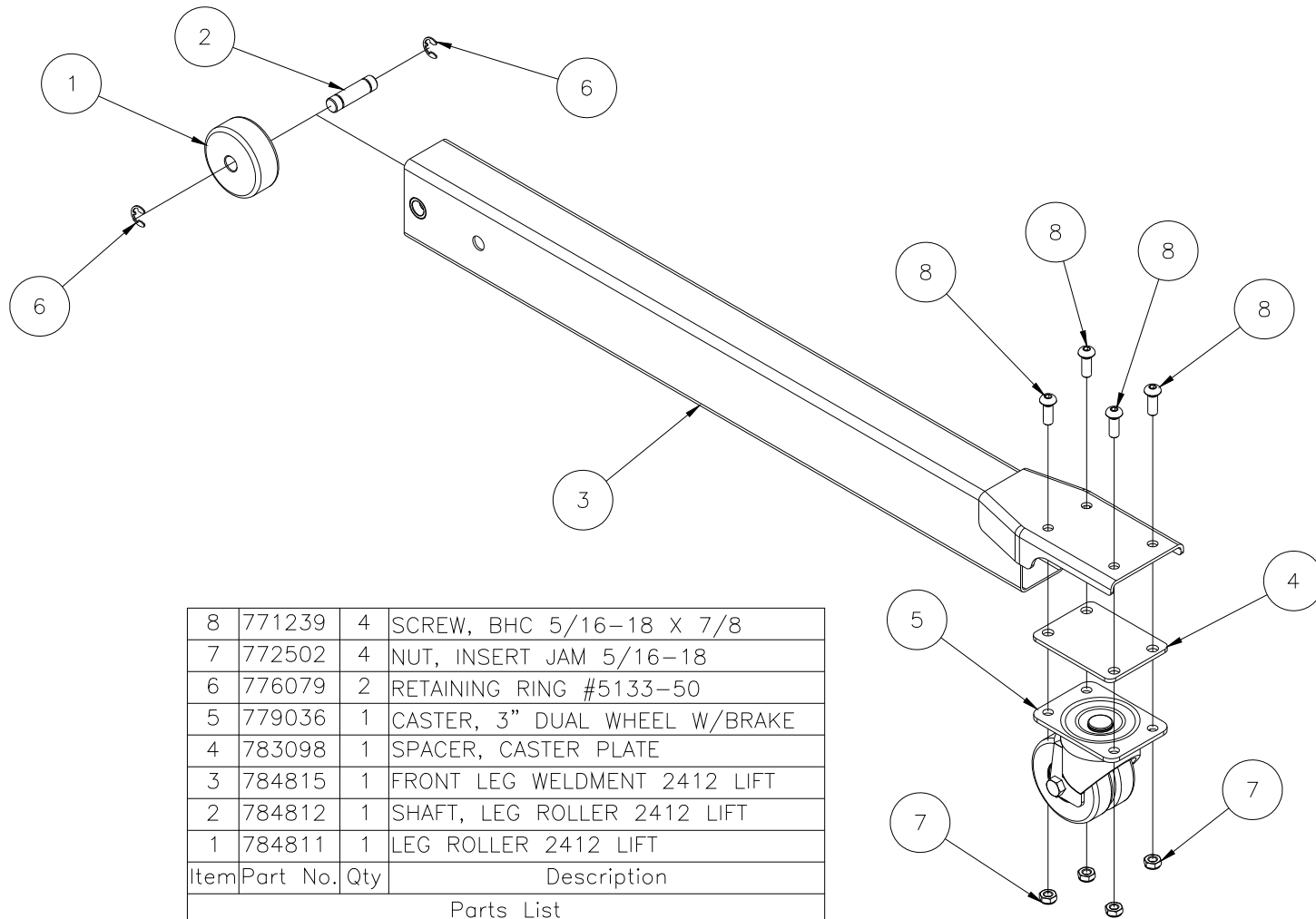
784827 -

T L WN, T E 24 2 24



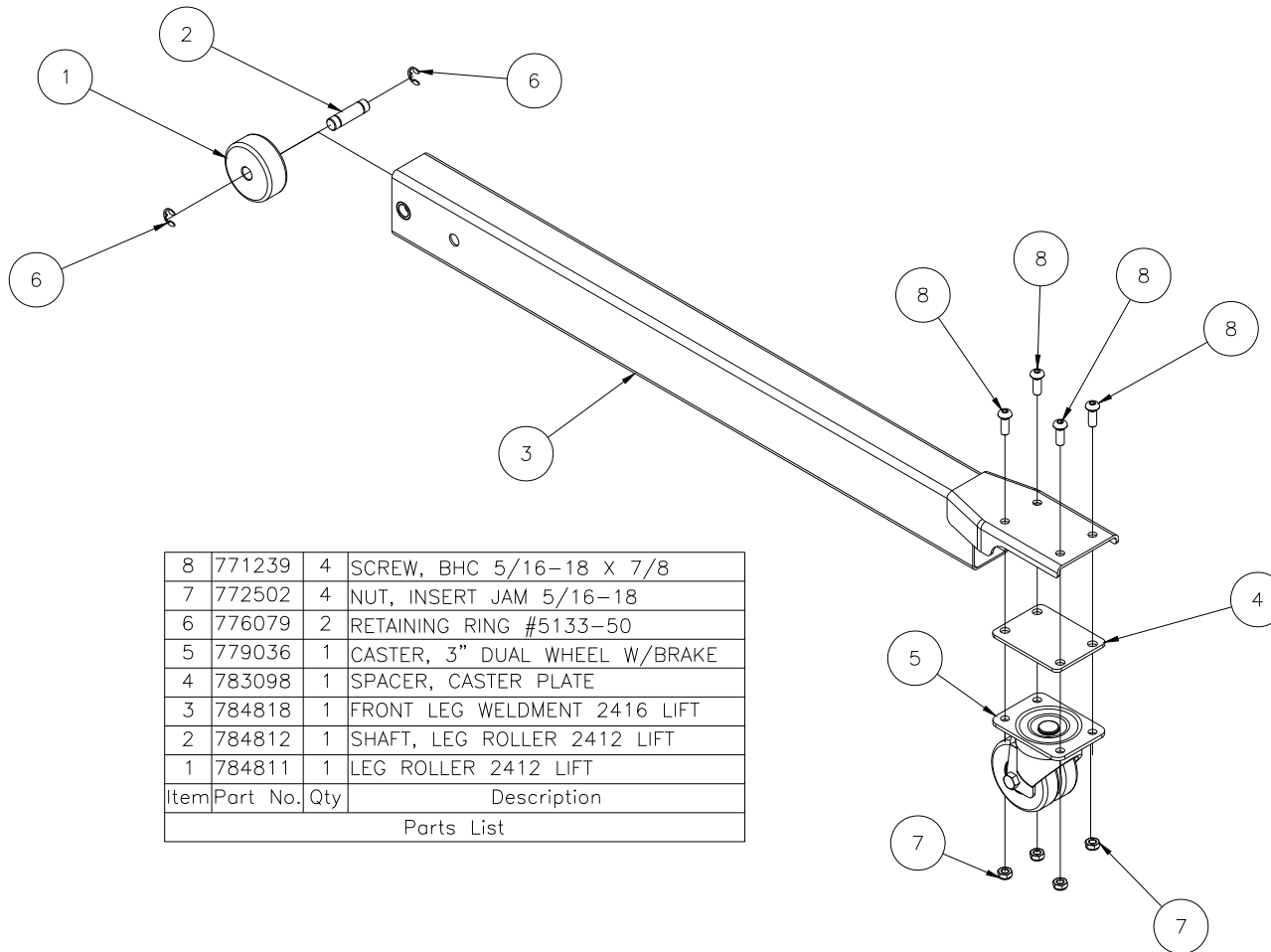
| | | | |
|------|--------|-----|------------------------------------|
| 5 | 776216 | 2 | SPRING, CENTURY #71912S |
| 4 | 774051 | 1 | PIN, COTTER 1/8 X 3/4 |
| 3 | 773096 | 1 | WASHER, FLAT M12 |
| 2 | 783045 | 1 | MAST HOLD DOWN SPACER, PLTD. |
| 1 | 784828 | 1 | MAST HOLD DOWN WELDMENT, 2412/2416 |
| Item | Part | Qty | Description |
| | No. | | Parts List |

784810 - 2412 FRONT LEG ASSEMBLY



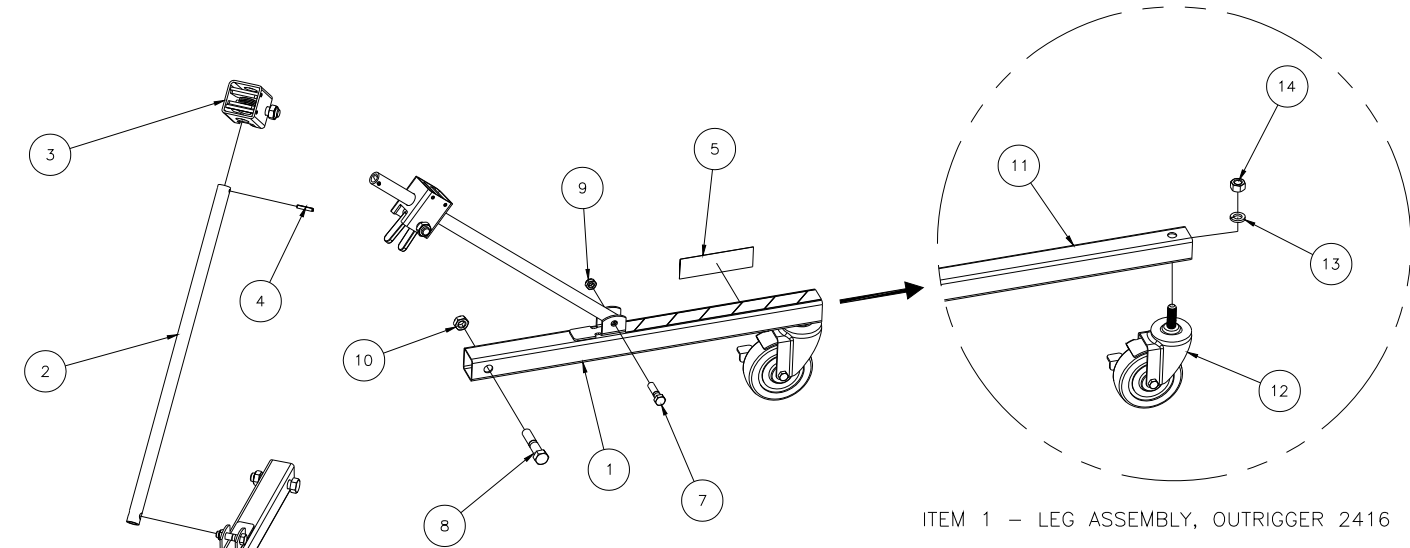
| | | | |
|------------|----------|-----|-------------------------------|
| 8 | 771239 | 4 | SCREW, BHC 5/16-18 X 7/8 |
| 7 | 772502 | 4 | NUT, INSERT JAM 5/16-18 |
| 6 | 776079 | 2 | RETAINING RING #5133-50 |
| 5 | 779036 | 1 | CASTER, 3" DUAL WHEEL W/BRAKE |
| 4 | 783098 | 1 | SPACER, CASTER PLATE |
| 3 | 784815 | 1 | FRONT LEG WELDMENT 2412 LIFT |
| 2 | 784812 | 1 | SHAFT, LEG ROLLER 2412 LIFT |
| 1 | 784811 | 1 | LEG ROLLER 2412 LIFT |
| Item | Part No. | Qty | Description |
| Parts List | | | |

784813 - 2416 FRONT LEG ASSEMBLY



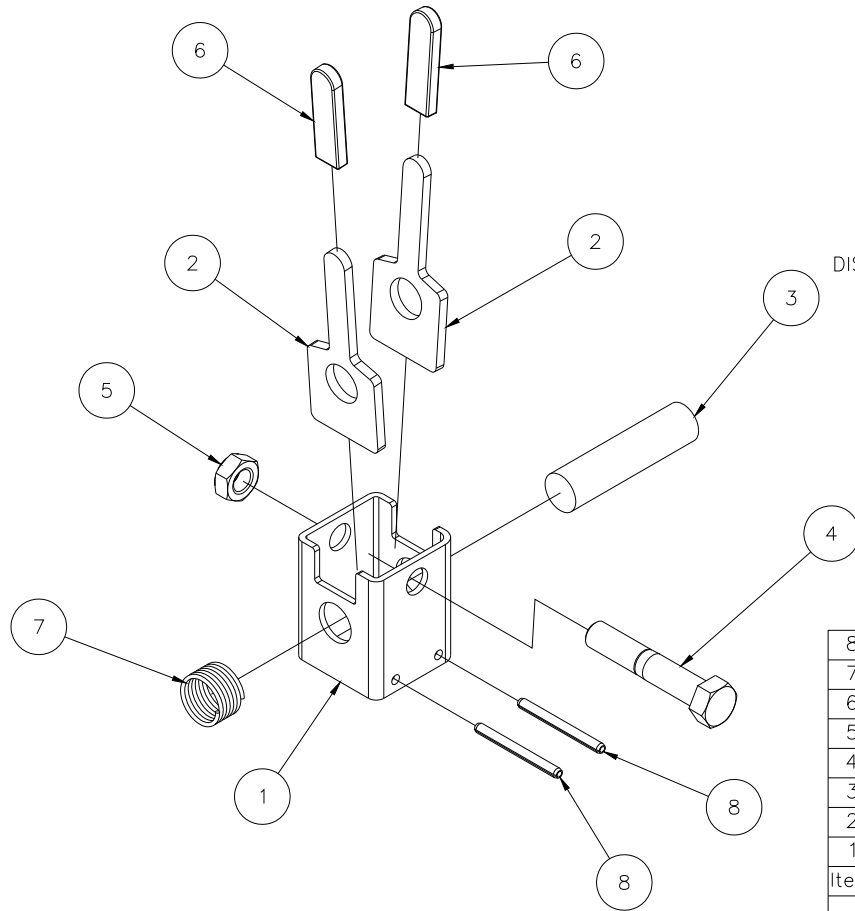
| | | | |
|------------|----------|-----|-------------------------------|
| 8 | 771239 | 4 | SCREW, BHC 5/16-18 X 7/8 |
| 7 | 772502 | 4 | NUT, INSERT JAM 5/16-18 |
| 6 | 776079 | 2 | RETAINING RING #5133-50 |
| 5 | 779036 | 1 | CASTER, 3" DUAL WHEEL W/BRAKE |
| 4 | 783098 | 1 | SPACER, CASTER PLATE |
| 3 | 784818 | 1 | FRONT LEG WELDMENT 2416 LIFT |
| 2 | 784812 | 1 | SHAFT, LEG ROLLER 2412 LIFT |
| 1 | 784811 | 1 | LEG ROLLER 2412 LIFT |
| Item | Part No. | Qty | Description |
| Parts List | | | |

783936 - OUTRIGGER ASSEMBLY



| | | | |
|------------|----------|-----|---------------------------------|
| 14 | 772100 | 1 | NUT, HEX 1/2-13 |
| 13 | 773590 | 1 | WASHER, LOCK 1/2 |
| 12 | 779032 | 1 | CASTER 4 X 1-1/4, 1/2-13 POST |
| 11 | 784902 | 1 | LEG WELDMENT, OUTRIGGER 2416 |
| 10 | 772358 | 2 | NUT, INSERT JAM 1/2-13 |
| 9 | 772350 | 2 | NUT, INSERT JAM 3/8-16 |
| 8 | 771127 | 2 | SCREW, HHC 1/2-13 X 2-1/2 GRD 5 |
| 7 | 771090 | 2 | SCREW, HHC 3/8-16 X 1-1/2 |
| 6 | 778362 | 2 | TAPE, 1" B/Y CAUTION STRIPE |
| 5 | 778348 | 2 | LABEL, LOWER STABILIZER LEGS |
| 4 | 774080 | 2 | PIN, ROLL 3/16 X 1 |
| 3 | 783940 | 2 | OUTRIGGER LOCK ASSEMBLY |
| 2 | 783943 | 2 | OUTRIGGER SUPPORT TUBE |
| 1 | 784901 | 2 | LEG ASSEMBLY, OUTRIGGER 2416 |
| Item | Part No. | Qty | Description |
| Parts List | | | |

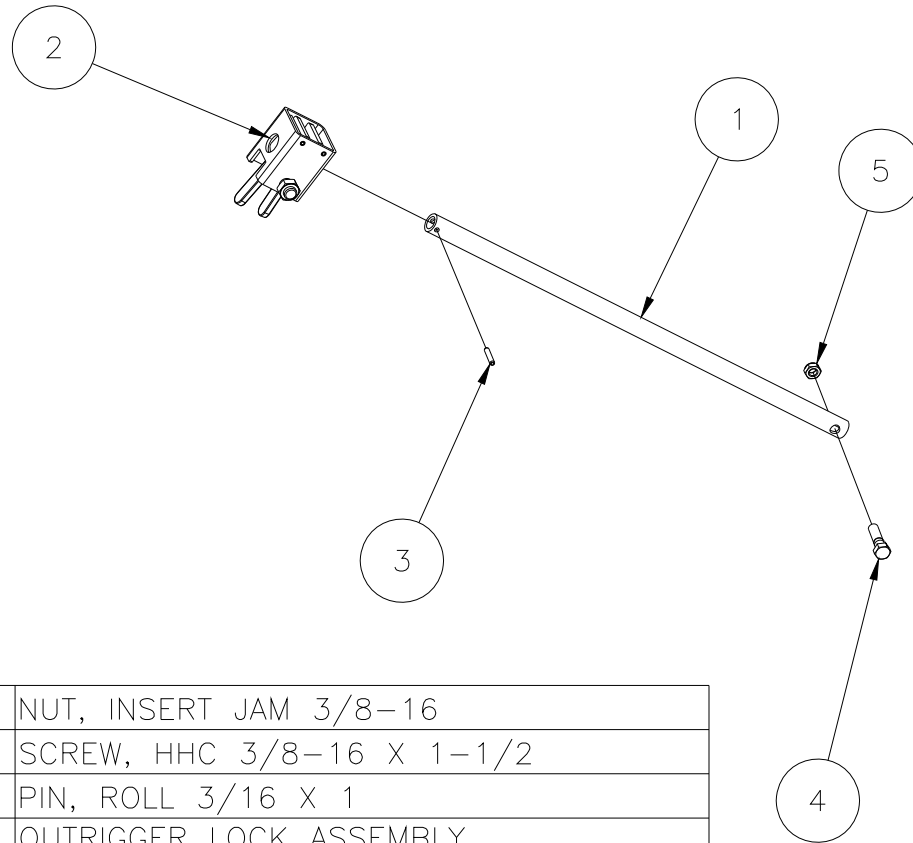
783940 - OUTRIGGER LOCK ASSEMBLY



DISCARD ITEM #3 ONCE THE OUTRIGGER LOCK ASSEMBLY IS IN PLACE ON THE OUTRIGGER SUPPORT TUBE

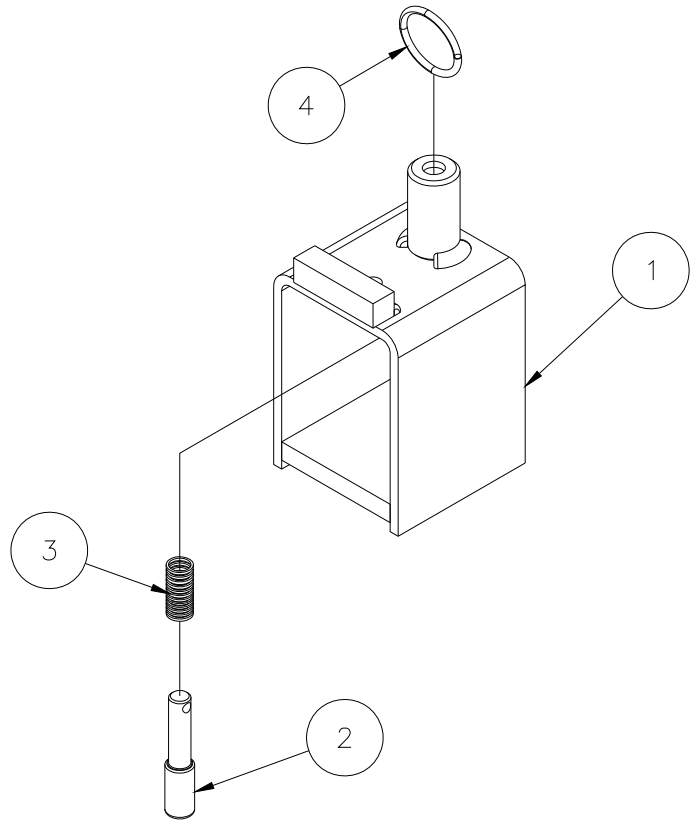
| | | | |
|------------|----------|-----|---------------------------------|
| 8 | 774084 | 2 | PIN, ROLL 3/16 X 2 |
| 7 | 776221 | 1 | SPRING, CENTURY #2952 |
| 6 | 779938 | 2 | CAP, RECT RD END 3/16 X 1/2 X 2 |
| 5 | 772358 | 1 | NUT, INSERT JAM 1/2-13 |
| 4 | 771141 | 1 | SCREW, HHC 1/2-13 X 2-3/4 |
| 3 | 783944 | 1 | OUTRIGGER SUPPORT TUBE STUB |
| 2 | 783942 | 2 | OUTRIGGER LOCK FINGER |
| 1 | 783941 | 1 | OUTRIGGER LOCK TUBE |
| Item | Part No. | Qty | Description |
| Parts List | | | |

783945 - OUTRIGGER LOCK KIT



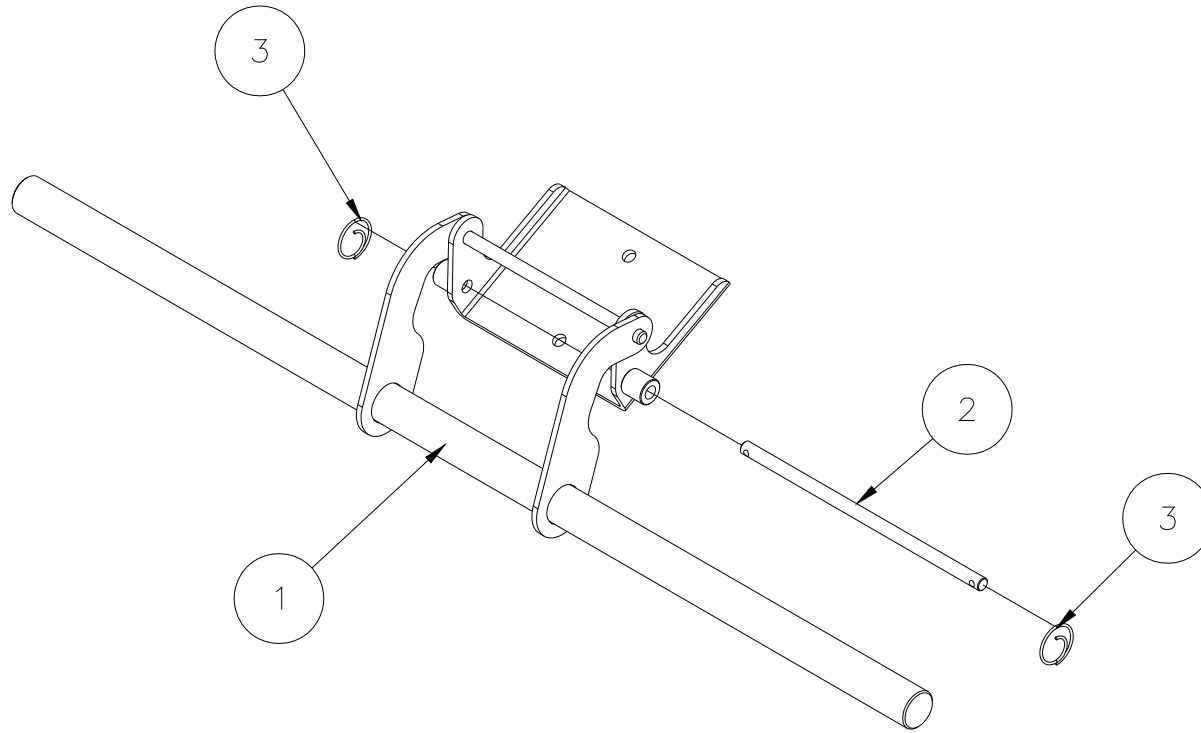
| | | | |
|------------|----------|-----|---------------------------|
| 5 | 772350 | 1 | NUT, INSERT JAM 3/8-16 |
| 4 | 771090 | 1 | SCREW, HHC 3/8-16 X 1-1/2 |
| 3 | 774080 | 1 | PIN, ROLL 3/16 X 1 |
| 2 | 783940 | 1 | OUTRIGGER LOCK ASSEMBLY |
| 1 | 783943 | 1 | OUTRIGGER SUPPORT TUBE |
| Item | Part No. | Qty | Description |
| Parts List | | | |

784820 - LEG LOCK ASSEMBLY



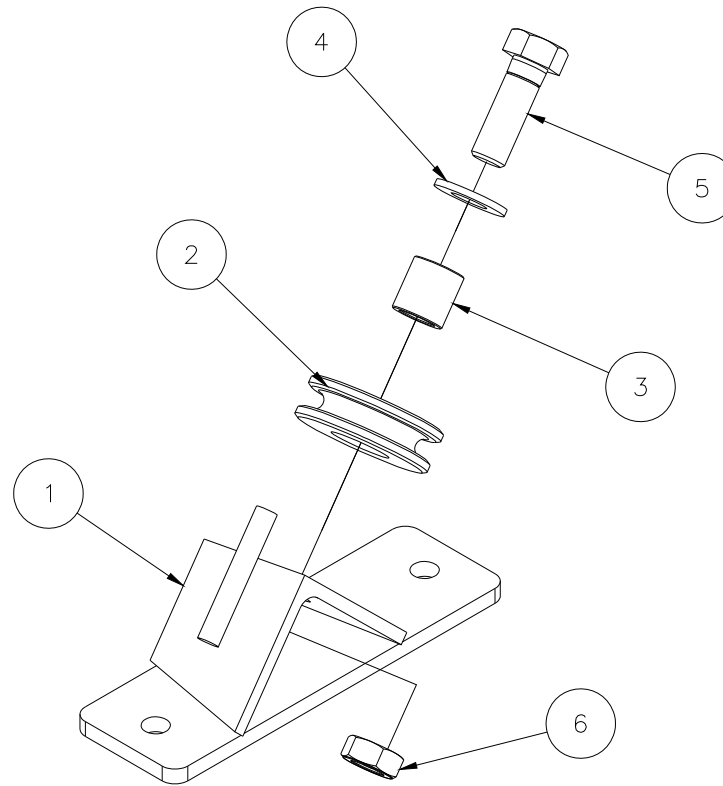
| | | | |
|------------|----------|-----|-------------------------------|
| 4 | 775110 | 1 | SPLIT RING 1-1/4" NICK. PLTD. |
| 3 | 776212 | 1 | SPRING, #DWC-042-G-9 |
| 2 | 782510 | 1 | PLUNGER |
| 1 | 784821 | 1 | LEG LOCK WELDMENT 2400 LIFT |
| Item | Part No. | Qty | Description |
| Parts List | | | |

784620 - BRAKE ASSEMBLY



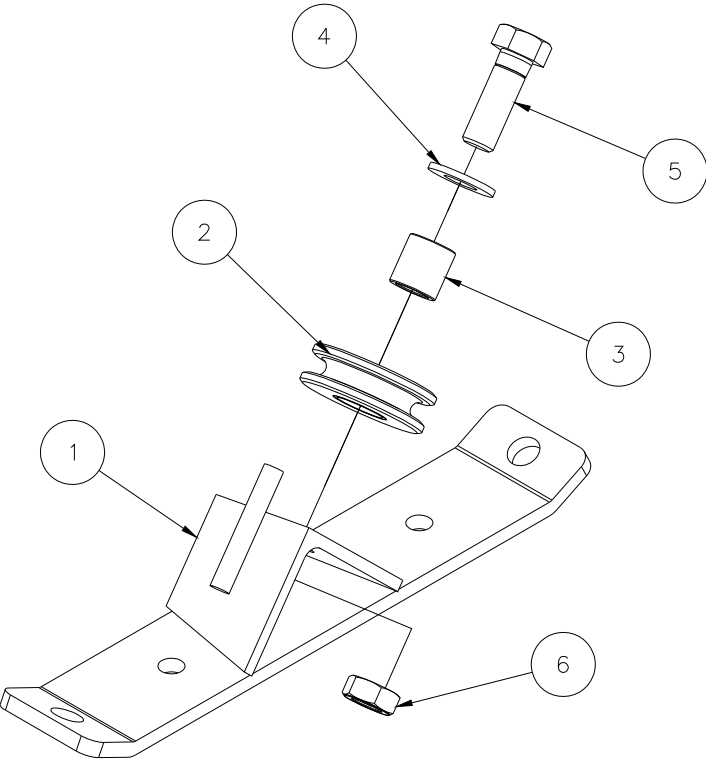
| | | | |
|------------|----------|-----|-------------------|
| 3 | 774053 | 2 | .750Ø RING COTTER |
| 2 | 784216 | 1 | BRAKE MOUNT PIN |
| 1 | 784625 | 1 | BRAKE WELDMENT |
| Item | Part No. | Qty | Description |
| Parts List | | | |

784780 - 2412 SPREADER PLATE ASSEMBLY



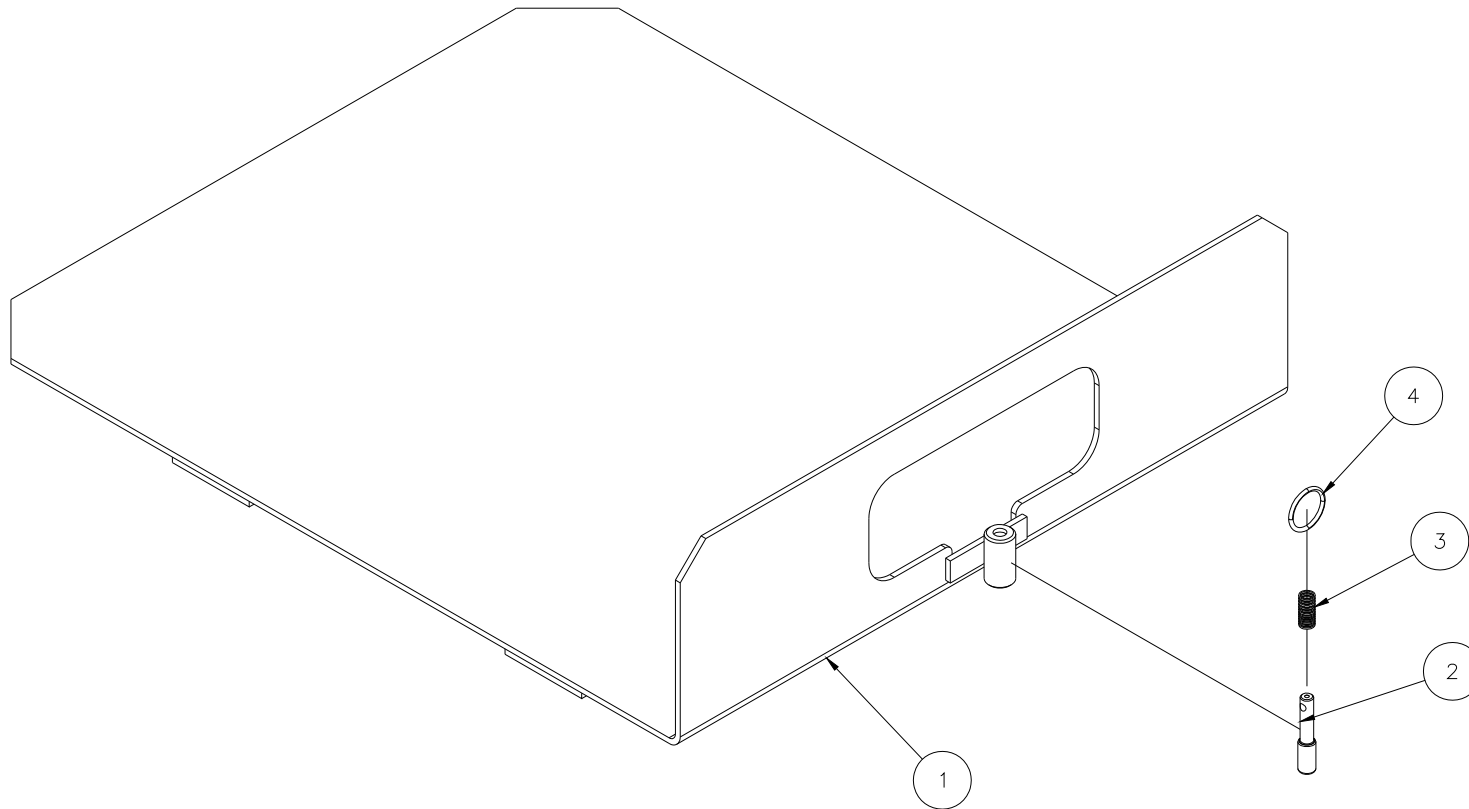
| | | | |
|------------|----------|-----|---------------------------|
| 6 | 772358 | 1 | NUT, INSERT JAM 1/2-13 |
| 5 | 771120 | 1 | SCREW, HHC 1/2-13 X 1-1/2 |
| 4 | 773094 | 1 | WASHER, FL 1/2 SAE |
| 3 | 782960 | 1 | ROLLER SHAFT |
| 2 | 780025 | 1 | SHEAVE, RAB 2" |
| 1 | 784781 | 1 | SPREADER PLATE WELDMENT |
| Item | Part No. | Qty | Description |
| Parts List | | | |

784784 - 2416 SPREADER PLATE ASSEMBLY



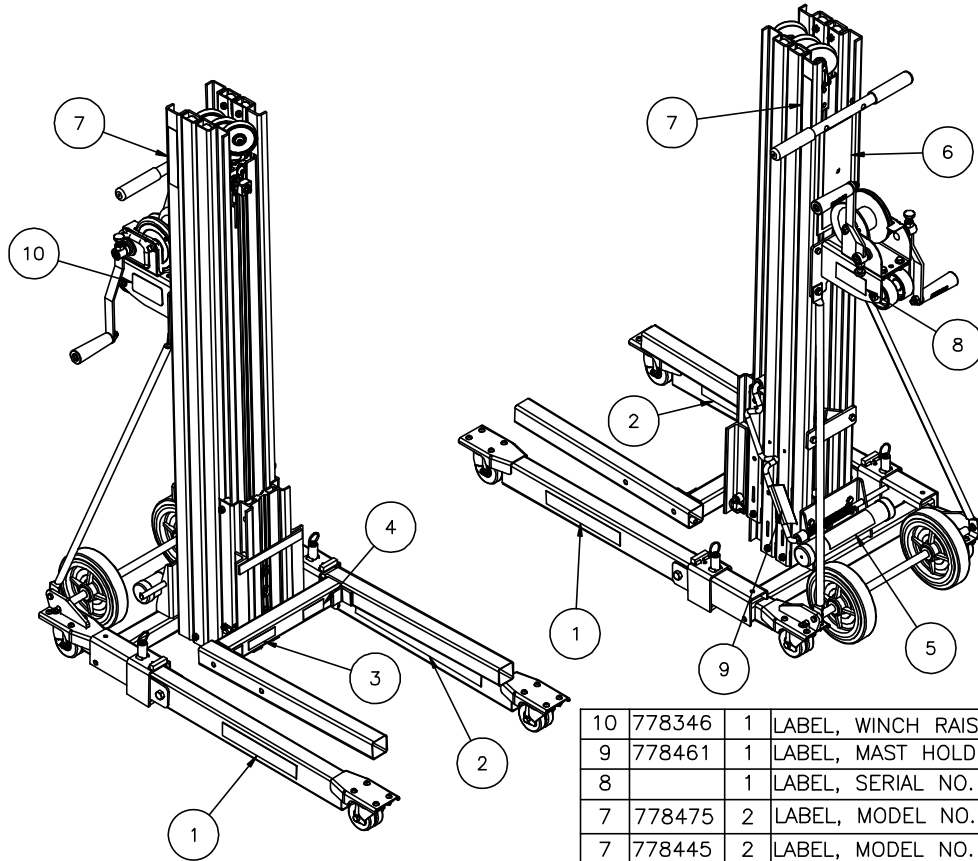
| | | | |
|------------|----------|-----|------------------------------|
| 6 | 772358 | 1 | NUT, INSERT JAM 1/2-13 |
| 5 | 771120 | 1 | SCREW, HHC 1/2-13 X 1-1/2 |
| 4 | 773094 | 1 | WASHER, FL 1/2 SAE |
| 3 | 782960 | 1 | ROLLER SHAFT |
| 2 | 780025 | 1 | SHEAVE, RAB 2" |
| 1 | 784788 | 1 | SPREADER PLATE WELDMENT 2416 |
| Item | Part No. | Qty | Description |
| Parts List | | | |

784320 - TRAY ASSEMBLY



| | | | |
|------------|----------|-----|------------------------------|
| 4 | 775110 | 1 | SPLIT RING 1-1/4" NICK PLTD. |
| 3 | 776212 | 1 | SPRING, #DWC-042-G-9 |
| 2 | 782510 | 1 | PLUNGER |
| 1 | 784321 | 1 | TRAY WELDMENT 2412 LIFT |
| Item | Part No. | Qty | Description |
| Parts List | | | |

2400 LABEL KIT



| | | | |
|------------|----------|-----|----------------------------------|
| 10 | 778346 | 1 | LABEL, WINCH RAISE/LOWER |
| 9 | 778461 | 1 | LABEL, MAST HOLD DOWN BAR TYPE |
| 8 | | 1 | LABEL, SERIAL NO. |
| 7 | 778475 | 2 | LABEL, MODEL NO. 2416 |
| 7 | 778445 | 2 | LABEL, MODEL NO. 2412 |
| 6 | 778458 | 1 | LABEL, LARGE WARNING 2200 LIFT |
| 5 | 778906 | 1 | LABEL, OPERATORS MANUAL |
| 4 | 778347 | 1 | LABEL, NO RIDERS WARNING |
| 3 | 778339 | 1 | LABEL, CARRIAGE LATCH WARNING |
| 2 | 778457 | 2 | LABEL, "DO NOT STAND UNDER LOAD" |
| 1 | 778450 | 2 | LABEL, "SUMNER" 2200 LIFT |
| Item | Part No. | Qty | Description |
| Parts List | | | |