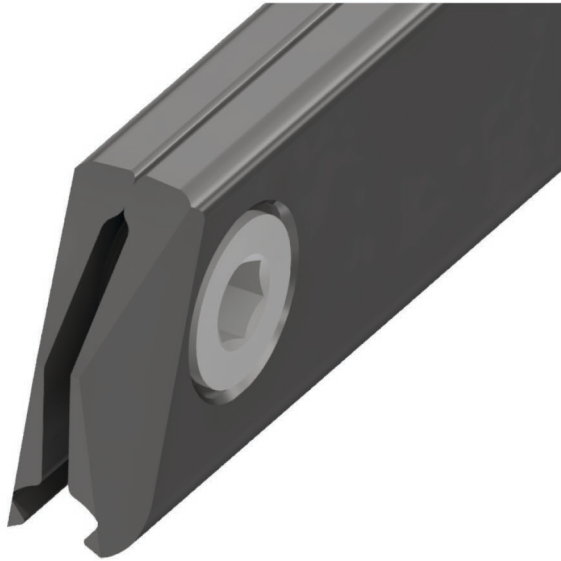


Curve rail type 1, for deviation angle 5.5°-7.5°, with thread 5/8", for grooved contact wire 100-120 mm²

Item number B0412-01



Dimensions

C: 5/8"
B: 52 mm
L: 1200 mm

Material and weight

Weight: 4.000 kg
Material: STL HDG

Comments

- The indication of the angles apply for grooved contact wires up to 107 mm²



Southwire™



A COLAS RAIL COMPANY

Contact Us: Transit@southwire.com