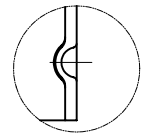
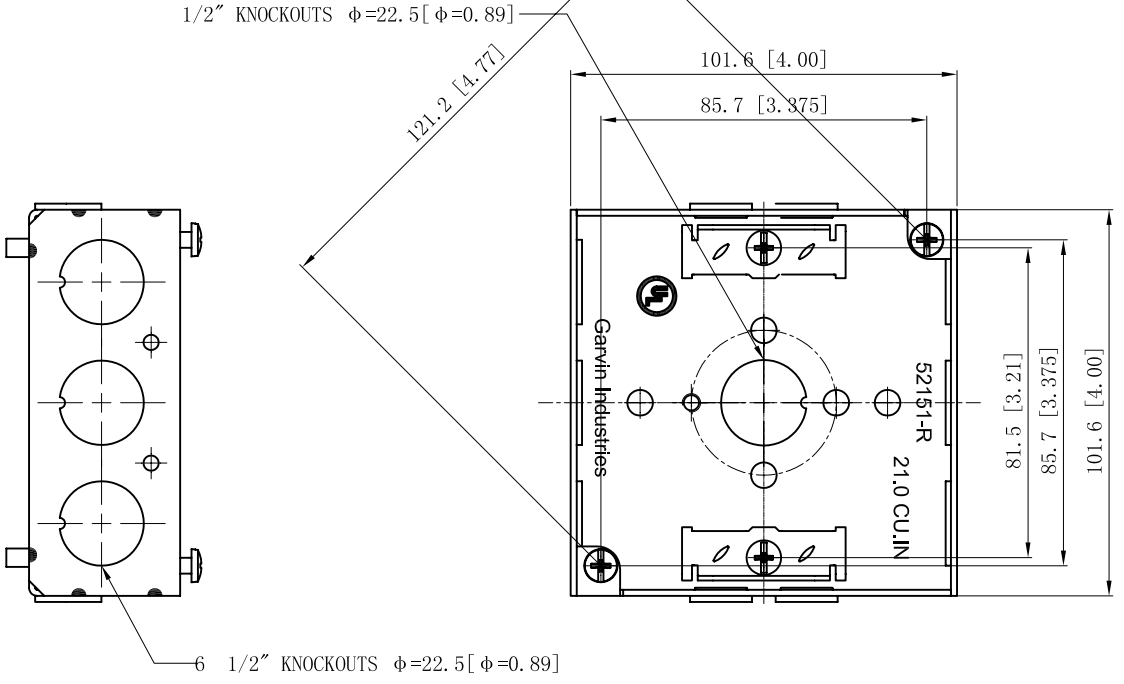
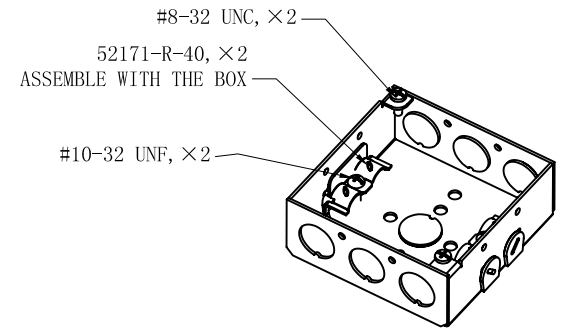
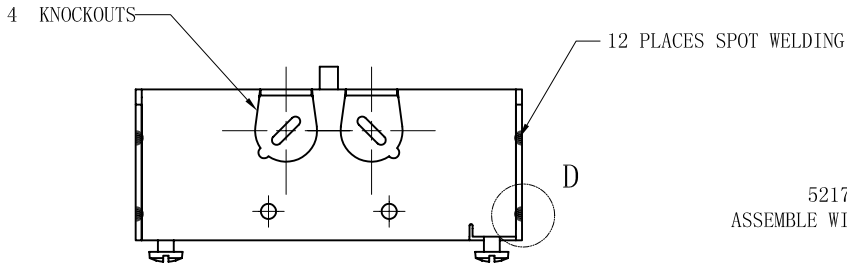


SIDES	BOTTOM
4 KNOCKOUTS	1/2" KNOCKOUTS
6 1/2" KNOCKOUTS	
2 PCS 8-32×1/2 Screws Installed	
2 PCS 10-32×1 Screws Installed	
Material:Steel-0.0625"-G60 Galvanized	



WELDING STYLE DETAIL VIEW D

This data sheet is for reference only.GARVIN INDUSTRIES reserves the right to make changes to the design without prior notice.

DESCRIPTION
TRADE REFERENCE TERMS

STANDARD PACKING
50 PCS

GARVIN INDUSTRIES		
4" SQUARE BOXES (1-1/2" DEEP)		
SIZE	DWG NO.	REV
A4	52151-R	C
DATA SHEET		