



# Southwire™

## **SIMFab™** SOLUTIONS

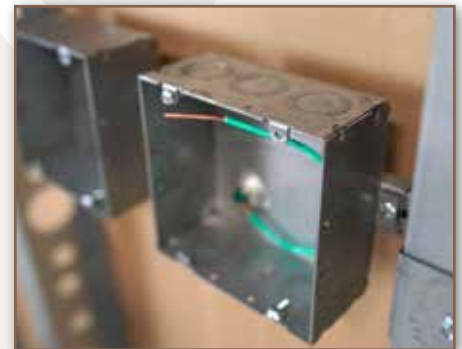
### **BAR PRE-FAB SYSTEM IN STOCK & READY TO SHIP!**

A BETTER WAY TO POSITION YOUR BOX SPEED, ACCURACY, QUALITY

#### FEATURES

- Shipped complete as box/bracket system – SIX configurations available
- Open design allows full access to interior of boxes
- Boxes slide freely along rail for perfect positioning every time
- Boxes are fully adjustable left to right for exact positioning between studs
- Available in a variety of power and data configurations
- All configurations feature large capacity, 4-11/16" square boxes
- Power Boxes – Top & Bottom, 1/2" & 3/4" concentric ko's, no ko's on sides
- Power Boxes feature preinstalled, 8" 12 GA ground lead
- Data Boxes – Top & Bottom, 3/4" & 1", 1" & 1-1/4" concentric ko's, no ko's on sides
- SPD1 includes single device 5/8" raised mud rings
- Rigid design eliminates the need for a far side support

## **CUSTOM ASSEMBLIES & COLORS AVAILABLE!**



#### SOUTHWIRE SIMFAB BAR + BOX ASSEMBLIES

PART #	DESCRIPTION	BOX CU. IN. CAPACITY	i2of5	CARTON QTY
SPD0	BAR + 1 POWER BOX, 1 DATA BOX	42.0	50785592133378	10
SPD0P2	BAR + 2 POWER BOXES	42.0	50785592133422	10
SPD0D2	BAR + 2 DATA BOXES	42.0	50785592133392	10
SPD0P	BAR + 1 POWER BOX	42.0	50785592133408	10
SPD0D	BAR + 1 DATA BOX	42.0	50785592133385	10
SPD1	BAR + 1 POWER BOX, 1 POWER BOX, DATA BOX, 1-DEVICE 5/8" RAISED MUD RINGS ON BOTH	42.0	50785592133422	10

**BUILT FOR DURABILITY.  
BUILT FOR RELIABILITY.  
BUILT FOR WORK.™**

1-855-798-6657 | SOUTHWIRE.COM

©2020 Southwire Company, LLC. All rights reserved.  
\*Registered Trademark & ™Trademark of Southwire Company, LLC.