

Report of Test

LLIA001617-017

Integrating Sphere Report

Catalog Number: LPT120W-850-EX39-G4 Medium Setting (100W)

Mogul-base retrofit lamp mounted VBD, formed plastic housing, formed aluminum heatsinks, clear plastic enclosures. 494 white LEDs, 12 CLW08E-120WC-19C2B-2835-A1 LED boards with 38 LEDs each and one CLW08E-120WD-19C2B-2835-A0 LED board with 38 LEDs

One internal LED driver



Performance Summary

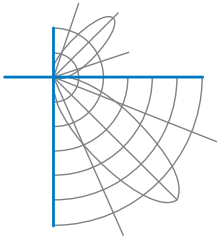
Voltage	120.0 Vac
Current	0.8208 A
Power	97.68 W
Frequency	59.99 Hz
Power Factor	0.992
Current THD	9.0 %
Total Luminous Flux	15774.1 lm
Efficacy	161.5 lm/W
Chromaticity (x,y)	(0.3426, 0.3538)
(u',v')	(0.2089, 0.4853)
Duv	0.0021
CCT	5104 K
CRI (Ra)	82
R9	2
TM-30: Rf	81
TM-30: Rg	96
TM-30: Rcs,h1	-13

Prepared For:

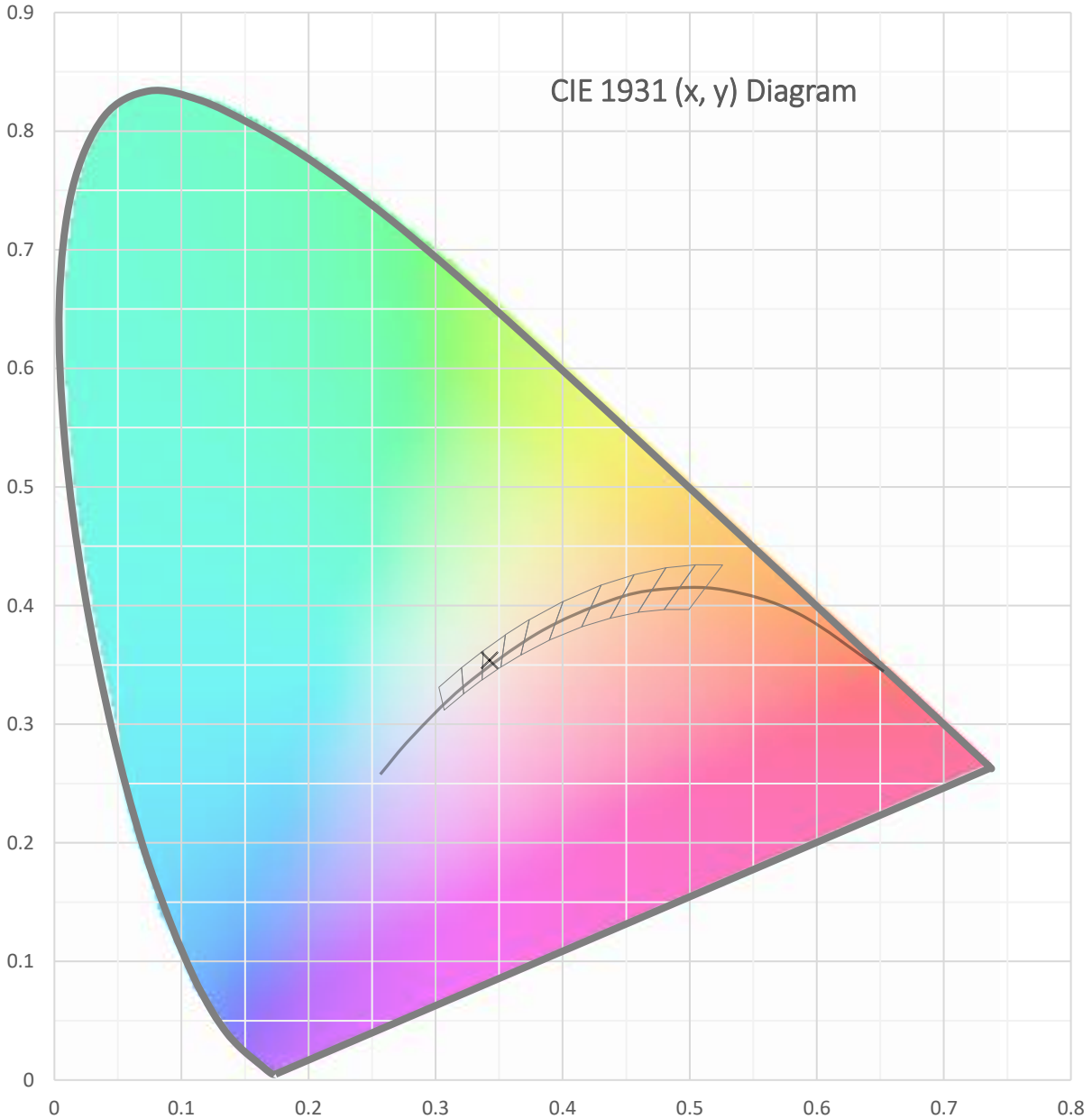
Topaz Lighting Corp
925 Waverly Avenue
Holtsville, NY 11742, USA

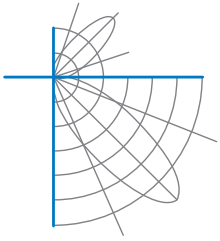
Test date: 12/29/2021
Report date: 12/30/2021

Signed: _____

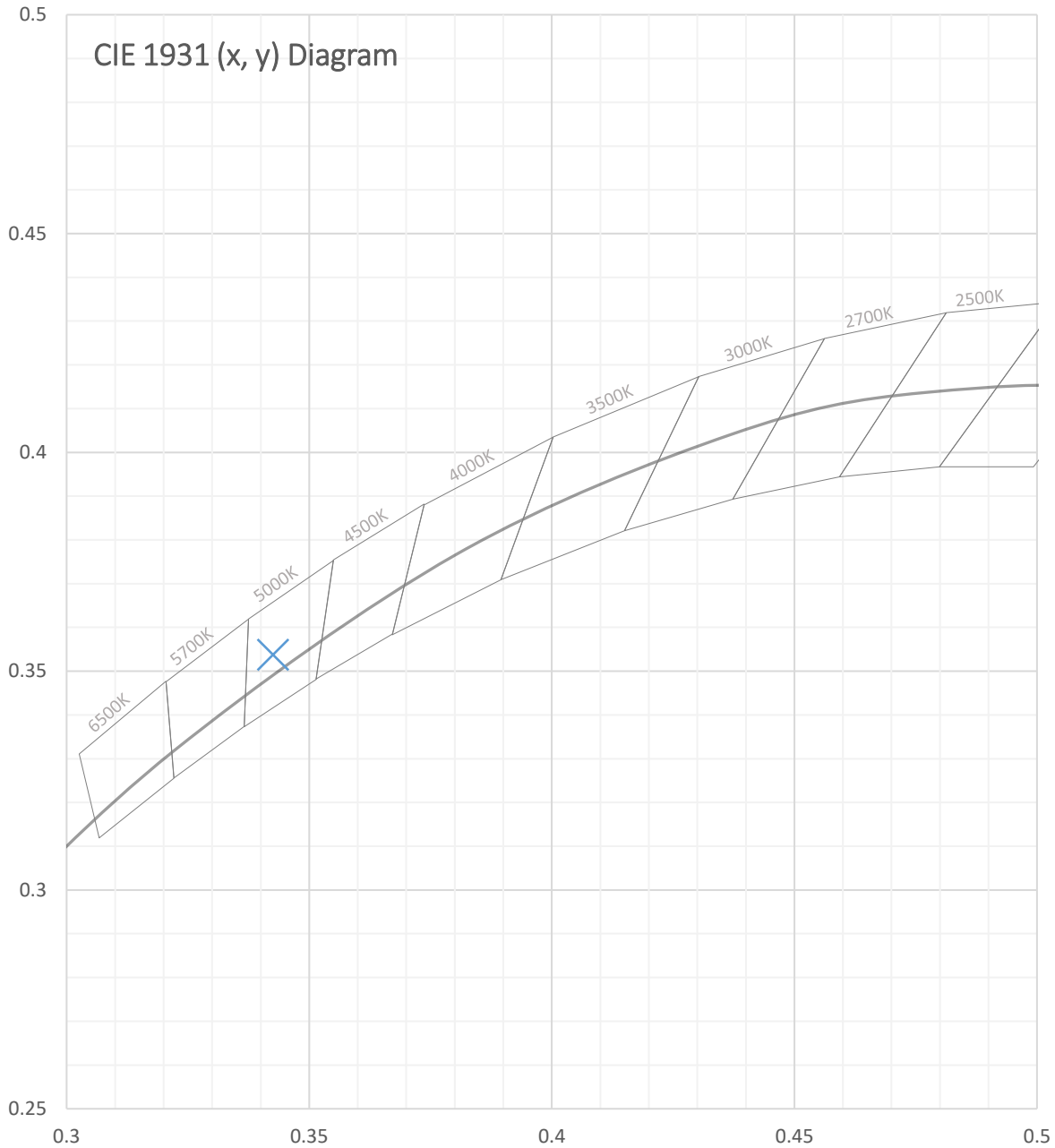


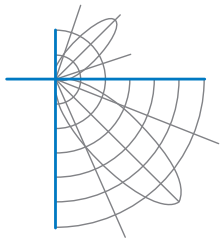
Test Report Number: LLIA001617-017





Test Report Number: LLIA001617-017





Test Report Number: LLIA001617-017

Total Radiant Flux	49.29 W
Total Luminous Flux	15774.1 Lm
Chromaticity CIE 1931 (x, y)	(0.3426, 0.3538)
Chromaticity CIE 1976 (u', v')	(0.2089, 0.4853)
Correlated Color Temperature (CCT)	5104 K
Color Rendering Index (Ra)	82
R1	80
R2	86
R3	91
R4	82
R5	81
R6	81
R7	86
R8	66
R9	2
R10	68
R11	82
R12	61
R13	81
R14	95
TM-30: Rf	81
TM-30: Rg	96
TM-30: Rcs,h1	-13
Distance from Planckian Locus (Duv)	0.0021
Scotopic/Photopic Ratio ‡	1.948

Electrical Data

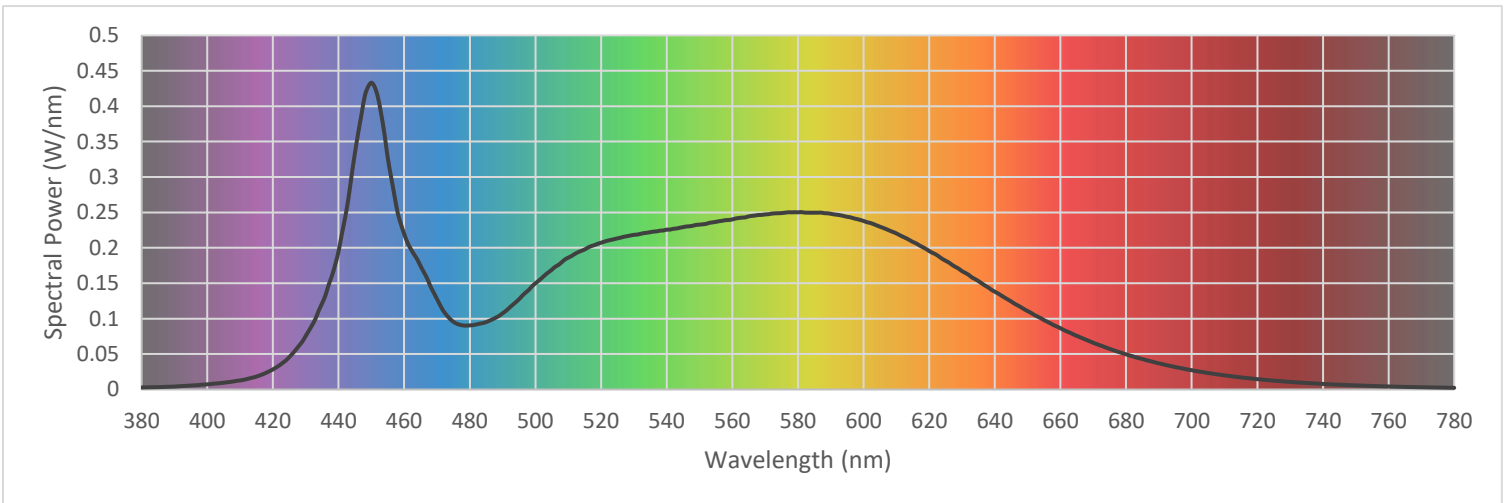
Voltage	120.0 Vac
Current	0.8208 A
Power	97.68 W
Frequency	59.99 Hz
Power Factor	0.992
Current THD	9.0 %



Test Report Number: LLIA001617-017

Summary Spectral Power Distribution (wavelength - nm, spectral power - W/nm)

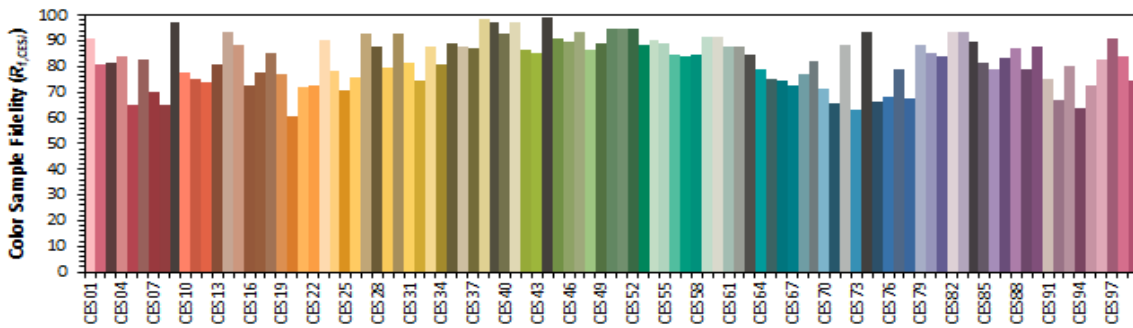
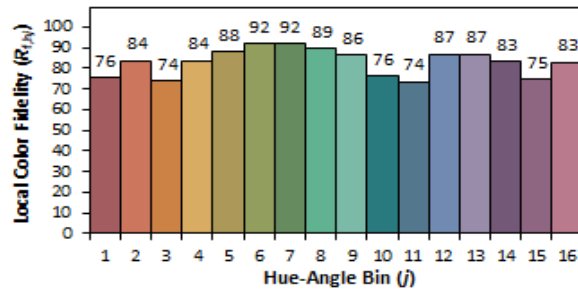
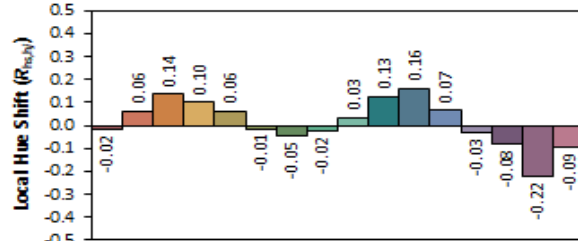
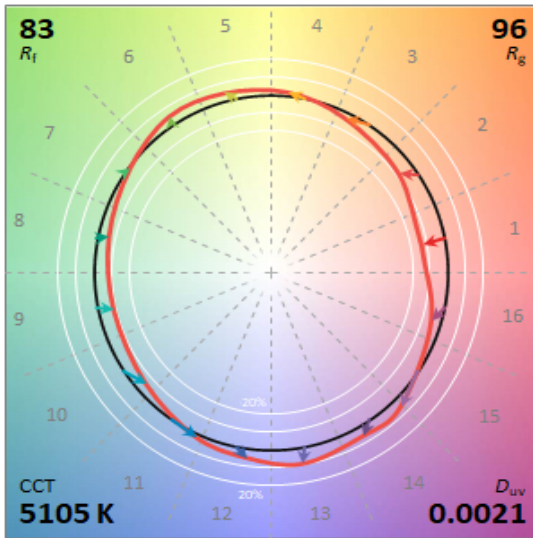
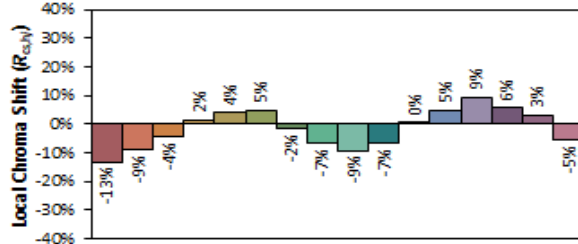
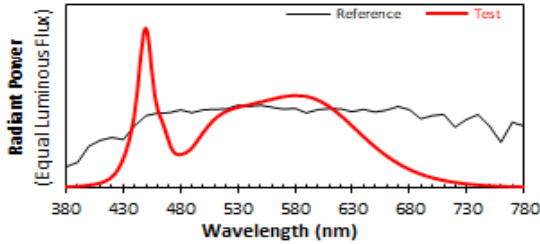
380	0.002861	480	0.090511	580	0.250144	680	0.049582
385	0.003298	485	0.095190	585	0.249627	685	0.042918
390	0.004132	490	0.107607	590	0.248105	690	0.036872
395	0.005560	495	0.127408	595	0.243808	695	0.031657
400	0.007272	500	0.149916	600	0.237913	700	0.027193
405	0.009524	505	0.169116	605	0.229789	705	0.023297
410	0.012758	510	0.186128	610	0.220383	710	0.019932
415	0.018267	515	0.197673	615	0.208373	715	0.017048
420	0.028350	520	0.207184	620	0.195433	720	0.014562
425	0.045834	525	0.213392	625	0.181753	725	0.012483
430	0.075604	530	0.218315	630	0.167108	730	0.010704
435	0.121703	535	0.222113	635	0.153026	735	0.009119
440	0.195152	540	0.225695	640	0.138063	740	0.007804
445	0.334155	545	0.229225	645	0.124235	745	0.006698
450	0.433128	550	0.232720	650	0.110666	750	0.005740
455	0.326950	555	0.236692	655	0.097899	755	0.004926
460	0.219546	560	0.240124	660	0.086519	760	0.004242
465	0.174178	565	0.244428	665	0.075610	765	0.003644
470	0.127641	570	0.247177	670	0.065907	770	0.003134
475	0.095552	575	0.249054	675	0.057279	775	0.002709
						780	0.002347





Test Report Number: LLIA001617-017

IES TM-30 Details



Notes:

x 0.3425
y 0.3537
u' 0.2089
v' 0.4853

CIE 13.3-1995
(CRI)
R_a 82
R_s 2



Test Report Number: LLIA001617-017

Test Equipment Configuration: LightLab International Allentown 2m Integrating Sphere
Measurements acquired using a Labsphere CDS 2600 spectroradiometer
Testing was performed using 4π geometry

Test Temperature: 24.5 °C

Test Procedure: Tested in accordance with the applicable sections of:
LM-79-19, LM-78-20, LM-58-20, ANSI_ANSLG C78.377-2017, TM-30-20

Significance: The laboratory has not participated in the selection of samples to be tested.
All testing is performed on the understanding that the significance of the report is limited to the extent that the test sample is representative of production units.

Notes: The measurements and other derived quantities contained in this report are based on the absolute data as measured.

Prorating the performance of the sample for the use of other component combinations (such as lamp / LED / Ballast / driver), or for use in different environmental conditions than that tested, may produce erroneous results.

This report is free of erasures and corrections

This report may contain data that are not covered by the NVLAP accreditation. Quantities marked with ‡ are not covered.

This report must not be used by the customer to claim product certification, approval or endorsement by NVLAP, NIST, or any agency of the Federal Government.