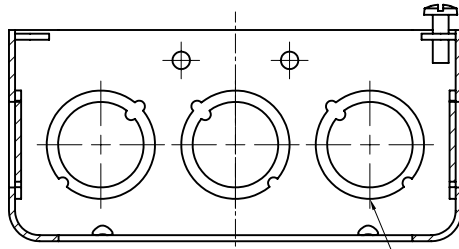
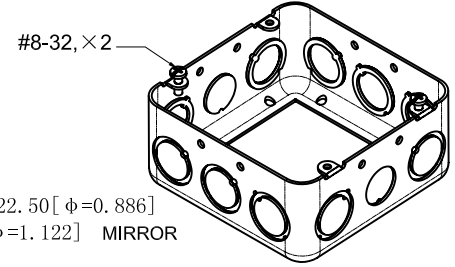


SIDES	BOTTOM
2 1/2" KNOCKOUTS	
10 1/2"-3/4" MOON KNOCKOUTS	
2 PCS 8-32x1/2 Screws Installed	
Material: Steel-0.0625"-G60 Galvanized	



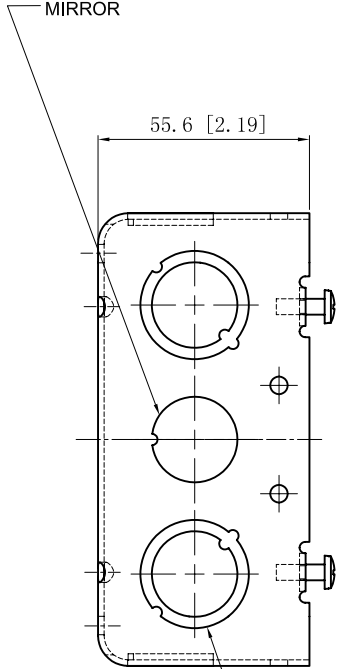
CUTAWAY VIEW B-B



#8-32, x2

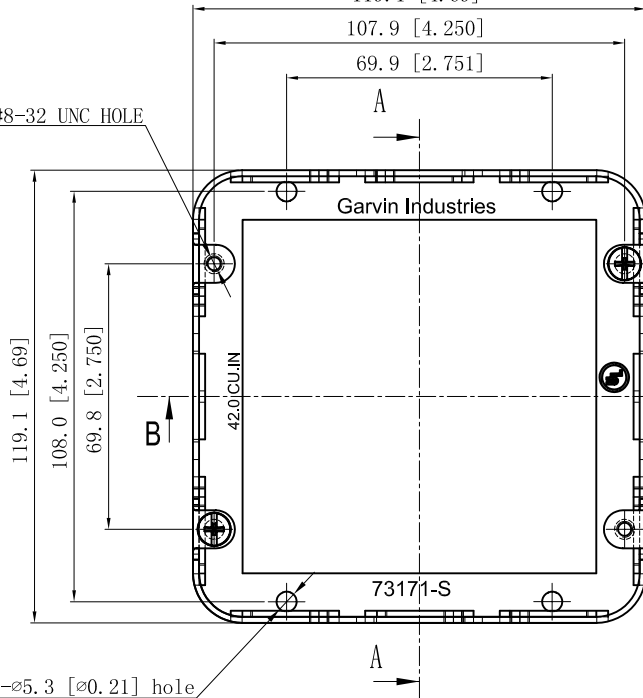
6 1/2"-3/4" KNOCKOUTS $\phi=22.50$ [$\phi=0.886$]
 $\phi=28.50$ [$\phi=1.122$] MIRROR

2 1/2" KNOCKOUTS $\phi=22.50$ [$\phi=0.886$]
 MIRROR



55.6 [2.19]

4-#8-32 UNC HOLE



Garvin Industries

73171-S

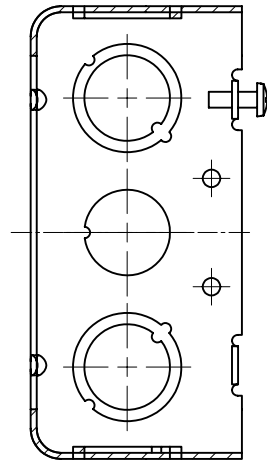
119.1 [4.69]

108.0 [4.250]

69.8 [2.750]

42.0 CU. IN

8- $\phi 5.3$ [$\phi 0.21$] hole



CUTAWAY VIEW A-A

6 1/2"-3/4" KNOCKOUTS $\phi=22.50$ [$\phi=0.886$]
 $\phi=28.50$ [$\phi=1.122$] MIRROR

This data sheet is for reference only. GARVIN INDUSTRIES reserves the right to make changes to the design without prior notice.

DESCRIPTION
TRADE REFERENCE TERMS

STANDARD PACKING
25 PCS

GARVIN INDUSTRIES		
TITLE 4-11/16" SQUARE EXTENSION RINGS 2-1/8" DEEP		
SIZE A4	DWG NO. 73171-S	REV A
DATA SHEET		