



Report of Test

LLIA001617-008

Integrating Sphere Report

Catalog Number: LPT54W-850-E39-G4 Medium Setting (45W)

Mogul-base retrofit lamp mounted VBU, formed plastic housing, formed aluminum heatsinks, clear plastic enclosures. 238 white LEDs, 8 CLW08E-54WC-14C2B-2835-A0 LED boards with 28 LEDs each and one CLW08E-54WD-14C1B-2835-A1 LED board with 14 LEDs

One internal LED driver



Performance Summary

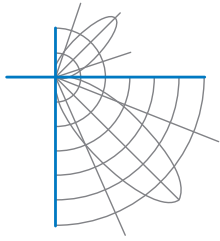
Voltage	120.0 Vac
Current	0.4086 A
Power	48.25 W
Frequency	59.99 Hz
Power Factor	0.984
Current THD	12.7 %
Total Luminous Flux	7772.3 lm
Efficacy	161.1 lm/W
Chromaticity (x,y)	(0.3416, 0.3525)
(u',v')	(0.2087, 0.4846)
Duv	0.0019
CCT	5140 K
CRI (Ra)	82
R9	3
TM-30: Rf	81
TM-30: Rg	96
TM-30: Rcs,h1	-13

Prepared For:

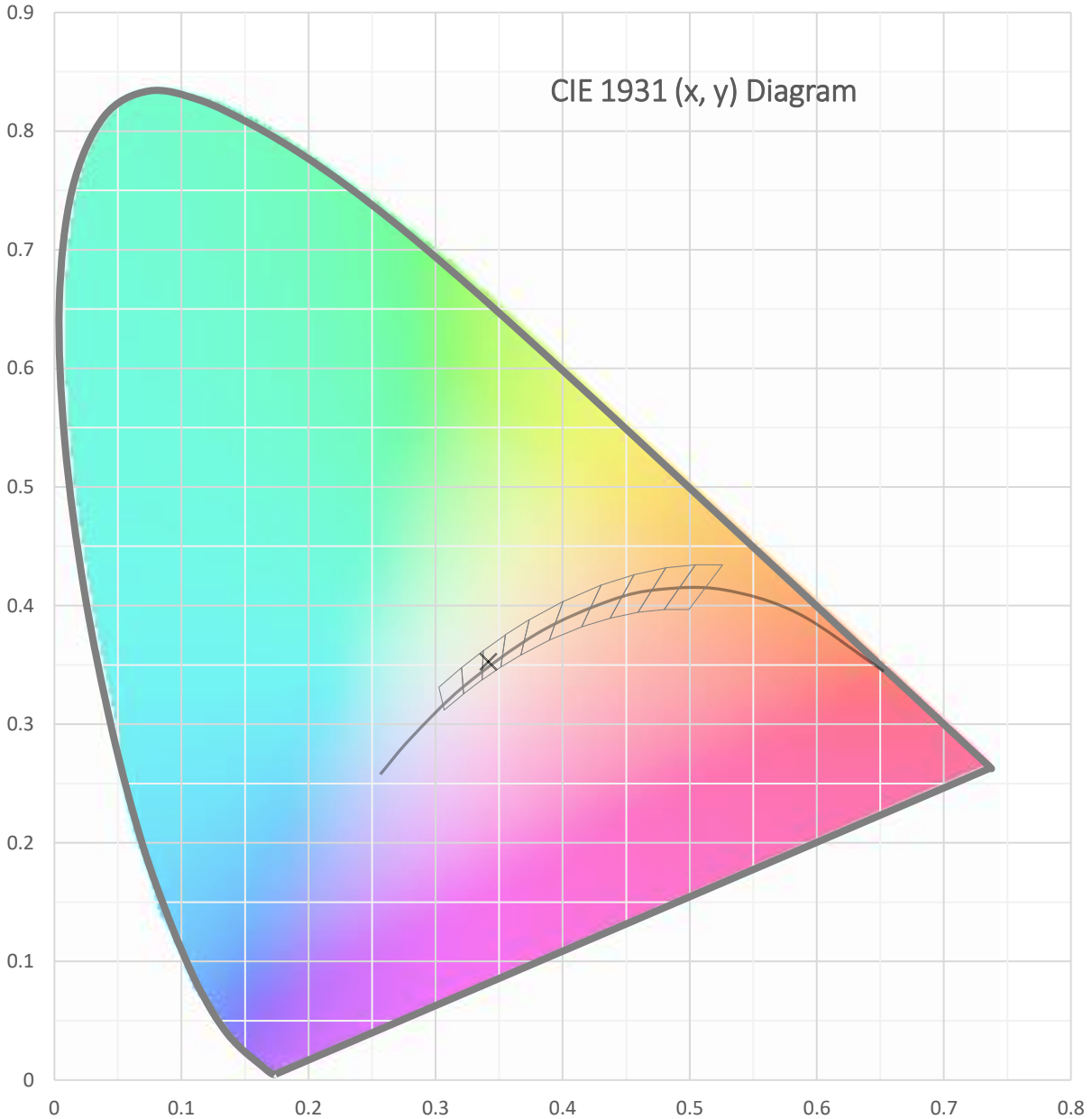
Topaz Lighting Corp
925 Waverly Avenue
Holtsville, NY 11742, USA

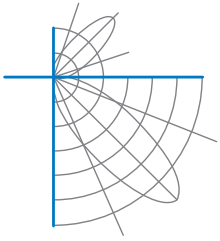
Test date: 12/28/2021
Report date: 12/30/2021

Signed: _____

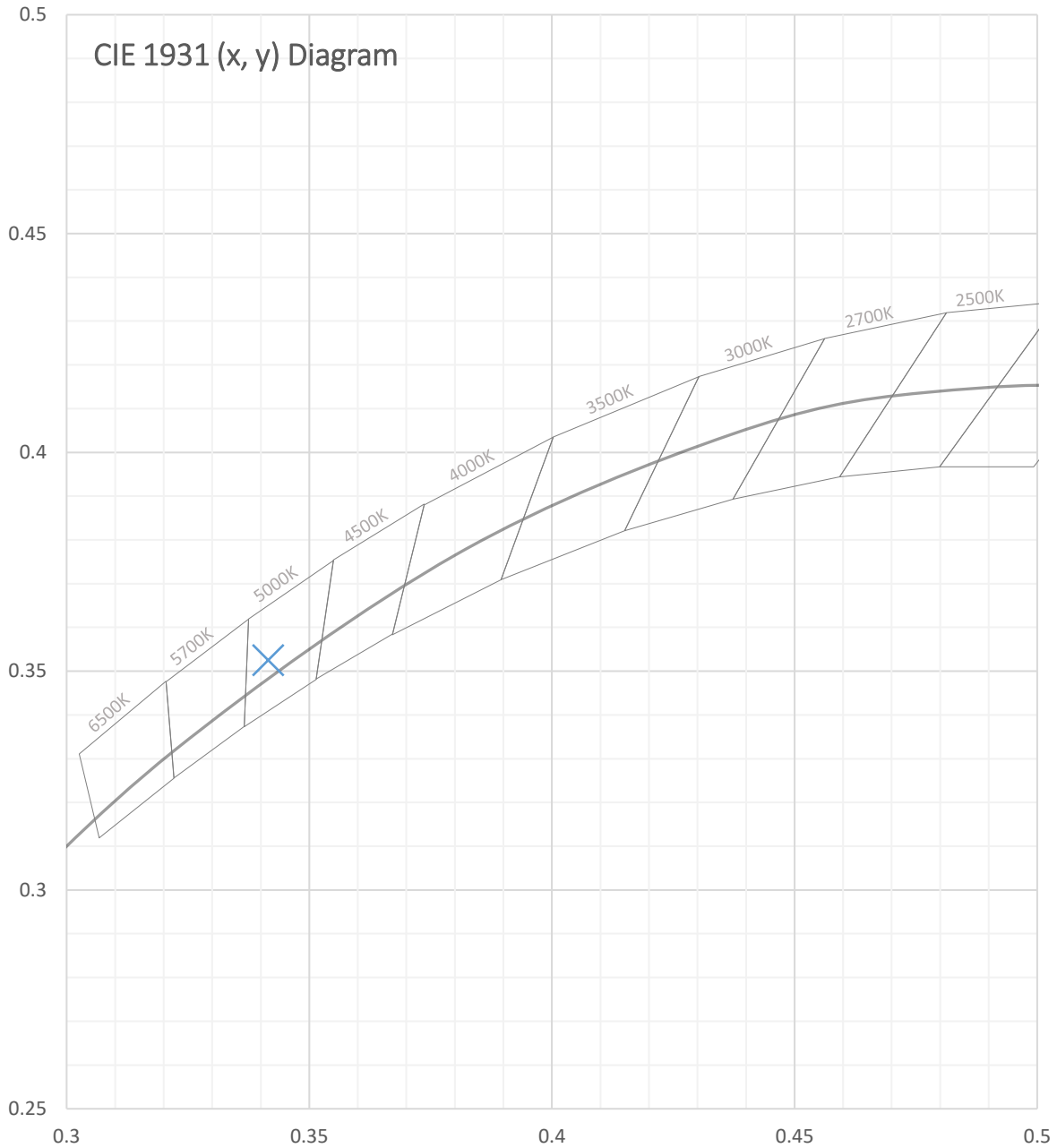


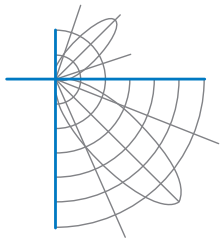
Test Report Number: LLIA001617-008





Test Report Number: LLIA001617-008





Test Report Number: LLIA001617-008

Total Radiant Flux	24.35 W
Total Luminous Flux	7772.3 Lm
Chromaticity CIE 1931 (x, y)	(0.3416, 0.3525)
Chromaticity CIE 1976 (u', v')	(0.2087, 0.4846)
Correlated Color Temperature (CCT)	5140 K
Color Rendering Index (Ra)	82
R1	80
R2	86
R3	91
R4	82
R5	81
R6	81
R7	86
R8	66
R9	3
R10	68
R11	82
R12	61
R13	82
R14	95
TM-30: Rf	81
TM-30: Rg	96
TM-30: Rcs,h1	-13
Distance from Planckian Locus (Duv)	0.0019
Scotopic/Photopic Ratio ‡	1.957

Electrical Data

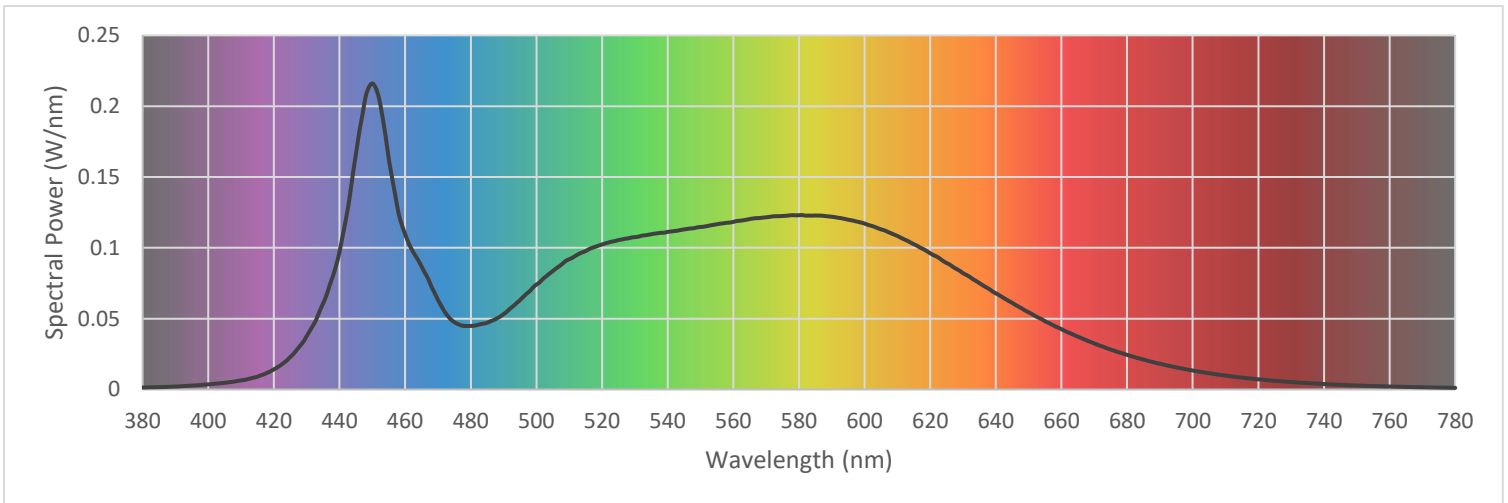
Voltage	120.0 Vac
Current	0.4086 A
Power	48.25 W
Frequency	59.99 Hz
Power Factor	0.984
Current THD	12.7 %



Test Report Number: LLIA001617-008

Summary Spectral Power Distribution (wavelength - nm, spectral power - W/nm)

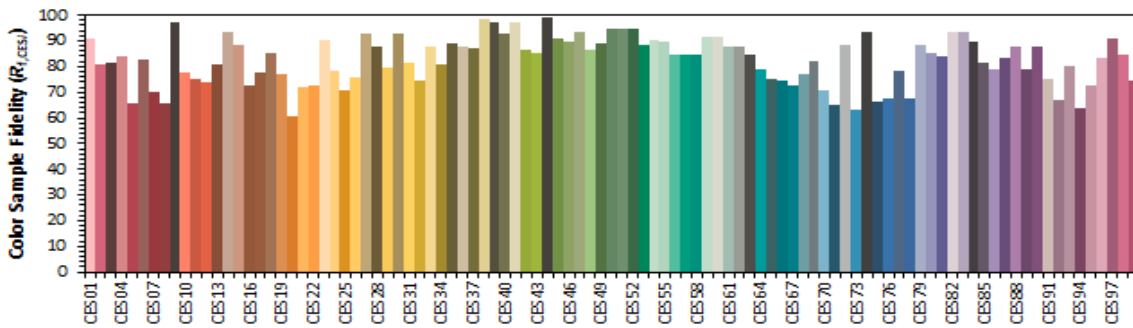
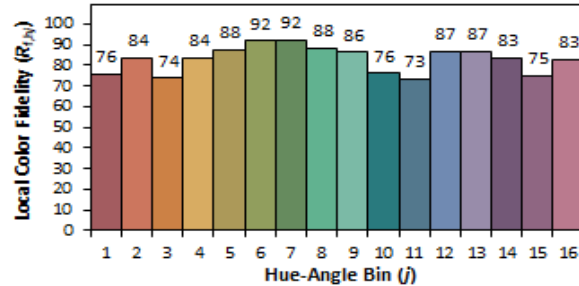
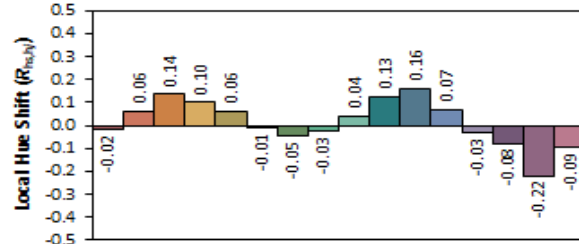
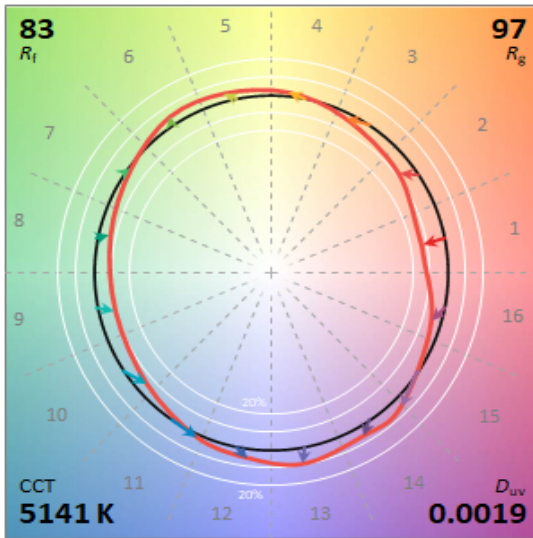
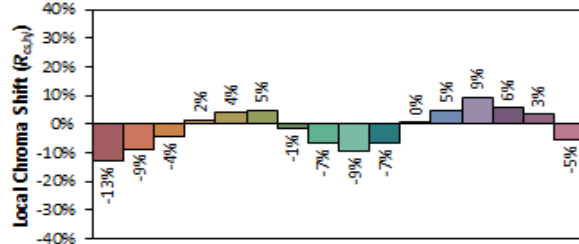
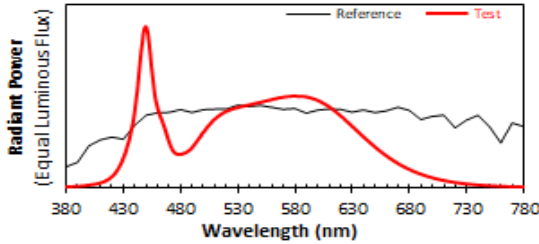
380	0.001434	480	0.044875	580	0.123001	680	0.024403
385	0.001652	485	0.047116	585	0.122824	685	0.021119
390	0.002064	490	0.053212	590	0.121964	690	0.018164
395	0.002762	495	0.063104	595	0.119825	695	0.015567
400	0.003594	500	0.074064	600	0.117116	700	0.013387
405	0.004679	505	0.083592	605	0.113027	705	0.011453
410	0.006363	510	0.091921	610	0.108405	710	0.009808
415	0.009048	515	0.097709	615	0.102551	715	0.008393
420	0.014218	520	0.102378	620	0.096147	720	0.007162
425	0.022988	525	0.105500	625	0.089278	725	0.006128
430	0.037712	530	0.107529	630	0.082092	730	0.005262
435	0.060786	535	0.109609	635	0.075082	735	0.004482
440	0.097403	540	0.111260	640	0.067865	740	0.003828
445	0.166432	545	0.113000	645	0.061158	745	0.003287
450	0.216064	550	0.114698	650	0.054469	750	0.002819
455	0.162888	555	0.116651	655	0.048170	755	0.002414
460	0.109534	560	0.118310	660	0.042600	760	0.002085
465	0.086792	565	0.120327	665	0.037257	765	0.001787
470	0.063183	570	0.121559	670	0.032478	770	0.001535
475	0.047503	575	0.122483	675	0.028194	775	0.001331
						780	0.001151



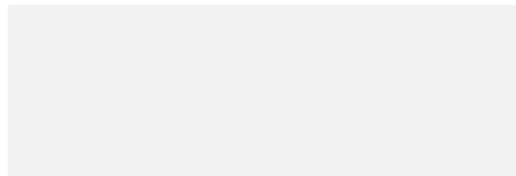


Test Report Number: LLIA001617-008

IES TM-30 Details

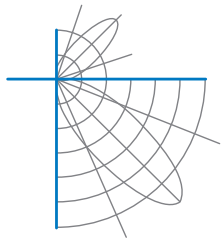


Notes:



x 0.3415
y 0.3524
u' 0.2087
v' 0.4845

CIE 13.3-1995 (CRI)	
R _a	82
R _s	3



Test Report Number: LLIA001617-008

Test Equipment Configuration: LightLab International Allentown 2m Integrating Sphere
Measurements acquired using a Labsphere CDS 2600 spectroradiometer
Testing was performed using 4π geometry

Test Temperature: 25.4 °C

Test Procedure: Tested in accordance with the applicable sections of:
LM-79-19, LM-78-20, LM-58-20, ANSI_ANSLG C78.377-2017, TM-30-20

Significance: The laboratory has not participated in the selection of samples to be tested.
All testing is performed on the understanding that the significance of the report is limited to the extent that the test sample is representative of production units.

Notes: The measurements and other derived quantities contained in this report are based on the absolute data as measured.

Prorating the performance of the sample for the use of other component combinations (such as lamp / LED / Ballast / driver), or for use in different environmental conditions than that tested, may produce erroneous results.

This report is free of erasures and corrections

This report may contain data that are not covered by the NVLAP accreditation. Quantities marked with ‡ are not covered.

This report must not be used by the customer to claim product certification, approval or endorsement by NVLAP, NIST, or any agency of the Federal Government.