

EMT CONNECTORS

1/2" – 2"

Southwire® SIMPush™ EMT connectors are used in dry locations to connect the end of UL-approved thin wall EMT conduit to metal boxes. Removable and reusable with SIMPush™ removal tool.

FEATURES:

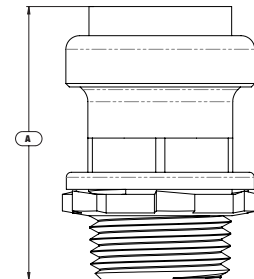
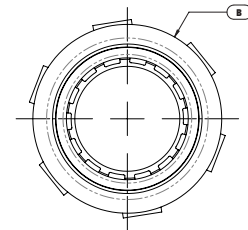
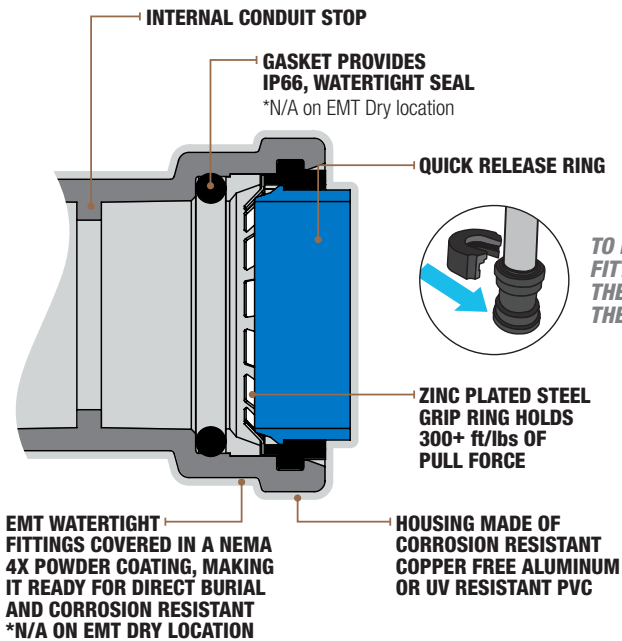
- Corrosion-resistant copper-free diecast aluminum construction
- Provides continuous ground
- Internally coated with lubricating grease
- Tested to 100 removal cycles for reuse
- Locking teeth are constructed from zinc-plated steel
- Includes zinc-plated steel lock nut



CERTIFICATIONS/RATINGS:
E-FILE #: E474447



DFTMBX050, DFTMBX075, DFTMBX100, DFTMBX125, DFTMBX150, DFTMBX200



Stock #	Model #	Trade Size	Quantity Per Box	H (in.) A	W (in.) B	L (in.) B	Associated Removal Tool Model #	Removal Tool Included
CONTRACTOR PACK								
65071002	E-BC-050WT	1/2"	40	1.559	1.105	1.105	E-RT-1P	YES
65071102	E-BC-075WT	3/4"	30	1.673	1.31	1.31	E-RT-1P	YES
65071202	E-BC-100WT	1"	20	1.84	1.8	1.8	E-RT-P2	YES
65071402	E-BC-125WT	1-1/4"	20	2.129	2.09	2.09	E-RT-P2	YES
65071502	E-BC-150WT	1-1/2"	15	2.59	2.35	2.35	E-RT-P3	YES
65071602	E-BC-200WT	2"	8	2.915	2.9	2.9	E-RT-P3	YES

Project Name:

Contractor:

Address:

**BUILT FOR DURABILITY.
BUILT FOR RELIABILITY.
BUILT FOR WORK.™**

1-855-798-6657 | SOUTHWIRETOOLS.COM

©2020 Southwire Company, LLC. All rights reserved.
*Registered Trademark & ™Trademark of Southwire Company, LLC.